



Future Projects 2020/2021



Road Projects

- Ashley Street
- Villiers, Swain and Panton Street intersection
- Calwynyardah-Noonkanbah Rd
- Camballin-Myroodah and other rural roads

Building Projects

- Security gates at the Derby Wharf
- Stimulus projects to be confirmed
- Wharf Restaurant



Parks and Gardens/Works Crew

The works crew is dedicated to keeping our town tidy and presentable rain, hail or shine.

Our team of 16 work hard to maintain median strips and verges, parks and sporting facilities, kerb lines, foot paths, patch potholes, pick up litter on a daily basis from Lytton Park all the way to the Wharf carpark as well as other town locations as required. They carry out fencing, reticulation and maintain children's playground areas and equipment and provide services to secure the Derby Wharf when vessels are alongside ensuring appropriate procedures are followed.



Cr Geoff Haerewa
Shire President
M: 0419 950 903
E: geoff.haerewa@sdwk.wa.gov.au



Cr Paul White
Deputy Shire President
M: Mobile: 0419 952 464
E: paul.white@sdwk.wa.gov.au



Cr Andrew Twaddle
Councillor
M: 0408 915 144
E: andrew.twaddle@sdwk.wa.gov.au



Cr Chris Kloss
Councillor
M: Mobile: 0417 902 400
E: chris.kloss@sdwk.wa.gov.au



Cr Geoff Davis
Councillor
M: 0429 092 777
E: geoff.davis@sdwk.wa.gov.au



Cr Rowena Mouda
Councillor
M: 0427 992 405
E: rowena.mouda@sdwk.wa.gov.au



Cr Steve Ross
Councillor
M: 0488 509 986
E: steve.ross@sdwk.wa.gov.au
Term expires: 2023



Cr Pat Riley
Councillor
M: 0457 552 393
E: pat.riley@sdwk.wa.gov.au



Cr Keith Bedford
Councillor
M: 0417 970 987
E: keith.bedford@sdwk.wa.gov.au
Term expires: 2023

Annual Rate Information 2020/2021

Message from President



The Shire of Derby/West Kimberley is now well on the path to delivering a responsible budget which will help ensure we are on the financial road map to recovery.

This has never been more important as the Shire must also weather the storm from the COVID-19 pandemic impact. We have been conscious of keeping the burden of rates and costs to our ratepayers at an acceptable level.

Rates help the Shire of Derby/West Kimberley fund essential programs, services and facilities for the community. As well as maintenance of the Shire's infrastructure, ongoing investment in areas such as roads, paths, parks and sports grounds is essential. Rates also help fund the many community services the Shire provides such as sports facilities, youth services, airports, libraries, arts and events programs.

This year's Budget and stimulus planning has been developed in a time unlike any other in living memory. The significant social and economic upheaval that COVID-19 pandemic has created, has had significant and lasting impacts that we couldn't have imagined only a few months ago. The Shire is aware that many businesses and families have been hit financially and this is why the Shire is keen to keep costs low and to support where possible with some level of stimulus. We have also developed a hardship policy to provide relief to rate payers facing financial stress.

The Shire is focussing its efforts on economic development over the coming year and is working with the Government and private enterprise to secure opportunities for the Shire that will have lasting effects for future generations. 'Jobs, jobs, jobs,' is the catch cry of the Shire and we are continuing to promote the need to secure investment in the local economy to ensure that our youth have a pathway to a job.

The Shire continues to operate in a challenging environment and the COVID-19 pandemic has only made this all the harder. However, we continue to make the tough decisions and focus on the provision of core services and the delivery of our capital works programs. The Shire will monitor the budget and external impacts quarterly this year and ensure that any improvement is delivered back into community services or recovery projects to bolster our local business and ensure that local jobs are secure.

Shire President, Geoff Haerewa

Understanding Your Rates

Rates are calculated for each property by multiplying its Gross Rental Value (GRV) or Unimproved Value (UV) which are provided by the Valuer General by the rate in the dollar. Each year Council adopts a rate in the dollar (RID) as a part of budget considerations. The Council applies differential rating on the various rating categories to ensure an equitable rating level for all rate payers. In 2020/2021 Council resolved to adopt the below rates in the dollar which have remained the same as advertised:

Description	RID (Expressed)	Min Payment
GRV General	\$0.125746	\$1027
UV Mining	\$0.120746	\$630
UV Rural	\$0.060373	\$1027

Swimming Pool Inspection Fee

This charge covers the cost of safety compliance inspections carried out by the Shire, as required by legislation.

Waste Collection

Refuse collection includes the kerbside collection (once weekly during dry season and twice weekly during wet season); and cyclone season verge collections. Refer to the Shire's website for collection days and waste management site fees and charges: www.sdwk.wa.gov.au.

Emergency Services Levy (ESL)

ESL is a levy imposed by the Department of Fire and Emergency Services (DFES) and collected on its behalf by local governments in WA.

Pensioner/Senior Rebate

Pensioners/Seniors Concession Scheme provides pensioners and seniors with a rebate or deferment of their local government rates charges and ESL levy.

To qualify for a rebate, you must own and occupy your house as at 1st July each year. AND you must be a holder of a valid:

1. Pensioner Concession Card issued by Centrelink/Veterans Affairs; OR
2. WA Seniors Card only; OR
3. State Concession Card; OR
4. WA Seniors Card issued by the Office of Seniors Affairs AND a Commonwealth Seniors Health Card.

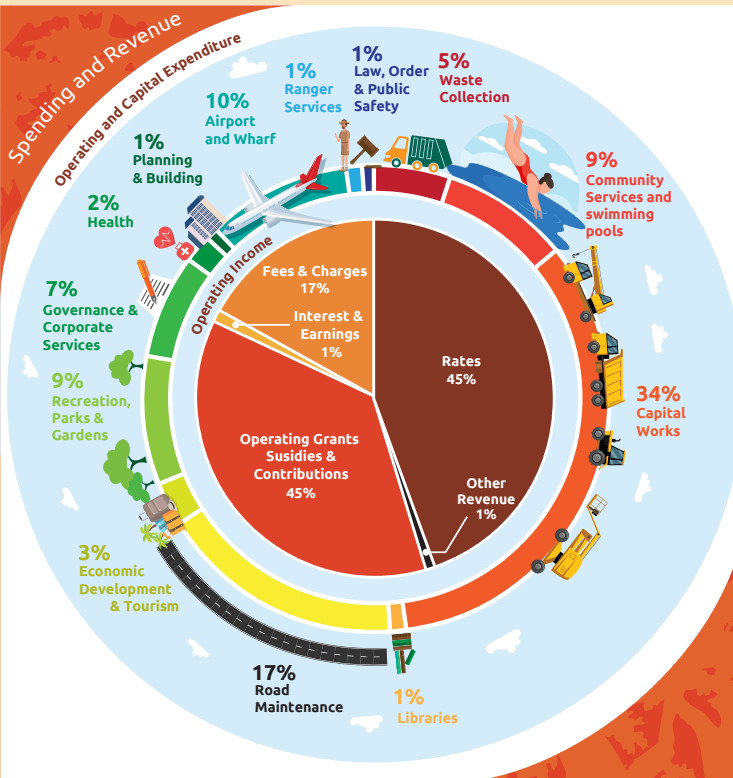
Rebate: Pay the required net due amount on the notice by 30th June of the current financial year. Eligible for deferment, rates charges and ESL levy will be automatically deferred if the amount required to be paid on the rates notice is not paid by 30th June of the current financial year. Service charges do not get deferred and remain payable.

Council Services Aboriginal Environmental Health Unit

The AEHU provides State-funded routine environmental health services to communities within the Shire. In the most recent financial year we launched our environmental health promotion program LIVE DEADLY! It is a program directly involving community members in the delivery of health promotion materials. Of recent times, the AEHU have been providing community education and awareness around best practice hygiene behaviours in response to the COVID-19 pandemic. Routine services delivered by the team also include the dog health program, community housing maintenance reporting, clinical referrals and health promotion activities.

Ranger Unit

All dogs and cats within the Shire are required to be registered. 1-year 3-year and lifetime registrations can be transferred between Shires in WA. For further information please refer to the Shire's website.



Register for E Rates

The Shire has recently introduced E Rates which is a function that allows for electronic delivery of Rate Notices via email in a PDF format. To register for this service please email Rates@sdwk.wa.gov.au quoting your assessment number and email address.

Council Services Aquatic and Recreation



The Aquatic and Recreation team is responsible for overseeing the Derby Memorial Swimming Pool and to support the delivery of programs at the Shire's main recreation facilities. The team is also responsible for overseeing the facility hire at the recreation facilities throughout the Shire, and they are available to provide guidance and assistance to community and sporting associations when requested. Refer to the Shire website for programs and events.

Library and Community Development

The Shire provides library and information services through the Derby and Fitzroy Crossing public libraries including children's programs and a local History collection of both towns.

The Community Development team offers a range of initiatives to support the community. Refer to the Shire's website for programs and events. Keep up to date with what is happening in the community by liking the SDWK Community Connect Facebook page.

Youth Services

The Shire's Youth Services team is both a provider and a facilitator of youth services in the Shire. The team delivers a drop-in youth service at the Derby Youth Centre, school holiday programs and evening activities on weekends.

