

NOVEMBER 6, 2020



Shire of Derby /  
West Kimberley

# SHIRE NEWS

The official newsletter of Shire of Derby/West Kimberley

## Derby Library, Council Chambers and Office renovation gets underway

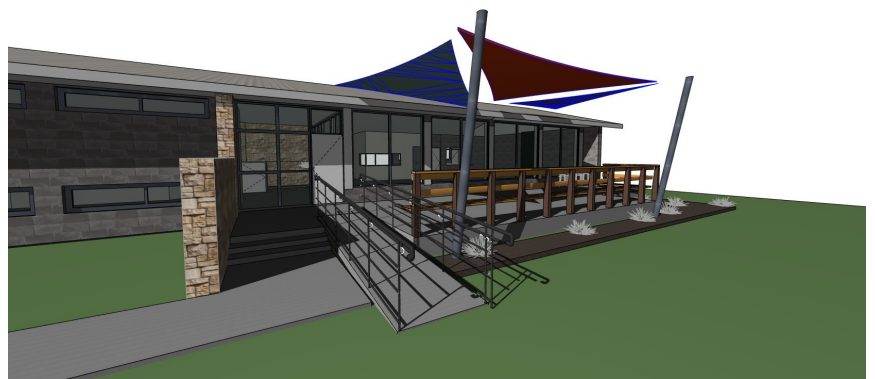
Works have been underway since June 2020 to improve accessibility and usability of the Derby Library, Council Chambers and Offices. These buildings were built in the 1960s and require modernisation.

Shire President Geoff Haerewa said the estimated date of completion is January 2021.

"The Botanic Gardens at the rear of the Library have been removed and upgraded. The area is no longer accessible to the public except for Library, community events and programs" Cr Haerewa said.

"The Library building will be separated to provide two distinct functions: the Public Library and Council Chambers. The shared ablutions will be upgraded to provide male and female ambulant facilities, accessible facilities and baby change facilities.

The Library will receive additional archive space for the provision of local history services, and a new office for Library staff. The Council Chambers will receive upgraded



Front view of Library veranda

technology systems including video conferencing, additional office space, and a kitchen suitable for events catering. The front veranda will have shade sails and bench seating installed, and renewed gardens. The old Toy Library will be upgraded to provide a meeting room, office space, and accessible ablutions for Council use.

"Both the Office and Library buildings will also have solar panels installed in early 2021 as part of the Horizon Power solar panel project.

"The Shire will work with contractors to minimise disruption to the public throughout the upgrade works, but some interruptions may be inevitable due to modification to plumbing and electrical infrastructure. There may be the requirement to close the Library to the public at times. If this is the case, the public will be notified through the Shire's website, social media and Library staff."

For more information:  
[sdwk.wa.gov.au](http://sdwk.wa.gov.au)



Follow us on Facebook:  
[@ShireofDerbyWestKimberley](https://www.facebook.com/ShireofDerbyWestKimberley)  
[@SDWKCC](https://www.facebook.com/SDWKCC)

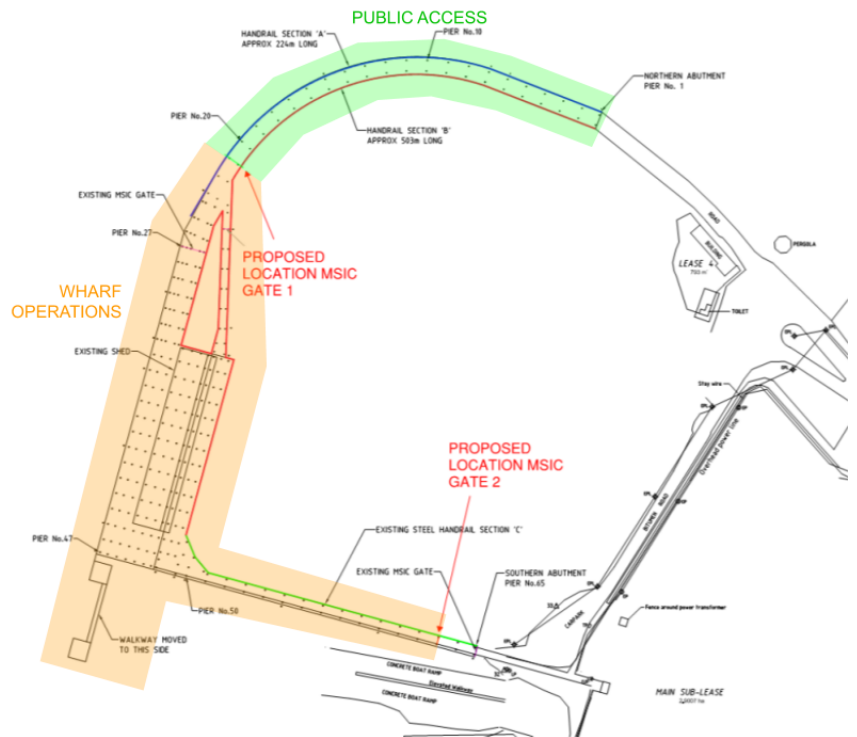
# Derby Wharf access works scheduled for November aim to improve public safety

Works to improve public safety, reduce risk and improve compliance and security of port operations at the Derby Wharf are due to commence in early November.

Shire President Geoff Haerewa said he expected the work would only take a week or so and would be conducted in two stages:

## Wharf operations gates

Two gates will be installed to maintain separation of the wharf operations from the public access area. The northern gate (Gate 1) will be installed at the end of the existing handrail. The southern gate (Gate 2) will be installed near the existing southern gate.



"Public access will still be provided within the hand-railed section shown on the diagram. Access to the operational area will continue to be administered by the Shire," Cr Haerewa said.

## North abutment plate repair

"The steel plate at the northern abutment was damaged during a weather event earlier this year. The damaged plate will be replaced with a larger, heavy duty steel plate."

If you have any questions please feel free to contact the Shire at 9191 0999.

## SHIRE OF DERBY/ WEST KIMBERLEY

### Christmas Closure

23 December 2020 - 3 January 2021 (inclusive)

- Derby & Fitzroy Crossing Administration Centres
- Fitzroy Crossing Visitors Centre & Library
- Work Depots
- Derby Youth Centre
- Derby Library

The Derby Memorial Swimming Pool will be open over the festive season except public holidays and early closing at 4pm on Xmas Eve and New Year's Eve. Shire Officers will be on call over the festive season. For emergency assistance, contact 08 9191 0999.

