



“ HAVE YOUR SAY

Derby-West Kimberley

Have your say and help shape the future of bike riding in the Kimberley region.

About the project

In collaboration with the shires of Broome, Derby-West Kimberley, Halls Creek and Wyndham-East Kimberley, the Department of Transport is developing the Kimberley 2050 Cycling Strategy.

The Strategy will set out a long-term vision for bike riding across the region, including an aspirational cycling network with proposed infrastructure and supporting initiatives, covering key townsites and providing interregional connections.

When complete, the Strategy will be used to guide funding decisions and prioritise key bike riding projects.

To help us develop the Strategy, we want to know:

- What your local bike riding needs are;
- What issues need to be addressed; and
- What opportunities you think will make riding safer, more enjoyable and convenient.

The draft cycling network

This information sheet includes maps illustrating a draft cycling network for the region (see pages 2 and 3).

The draft network has been built around the following themes:

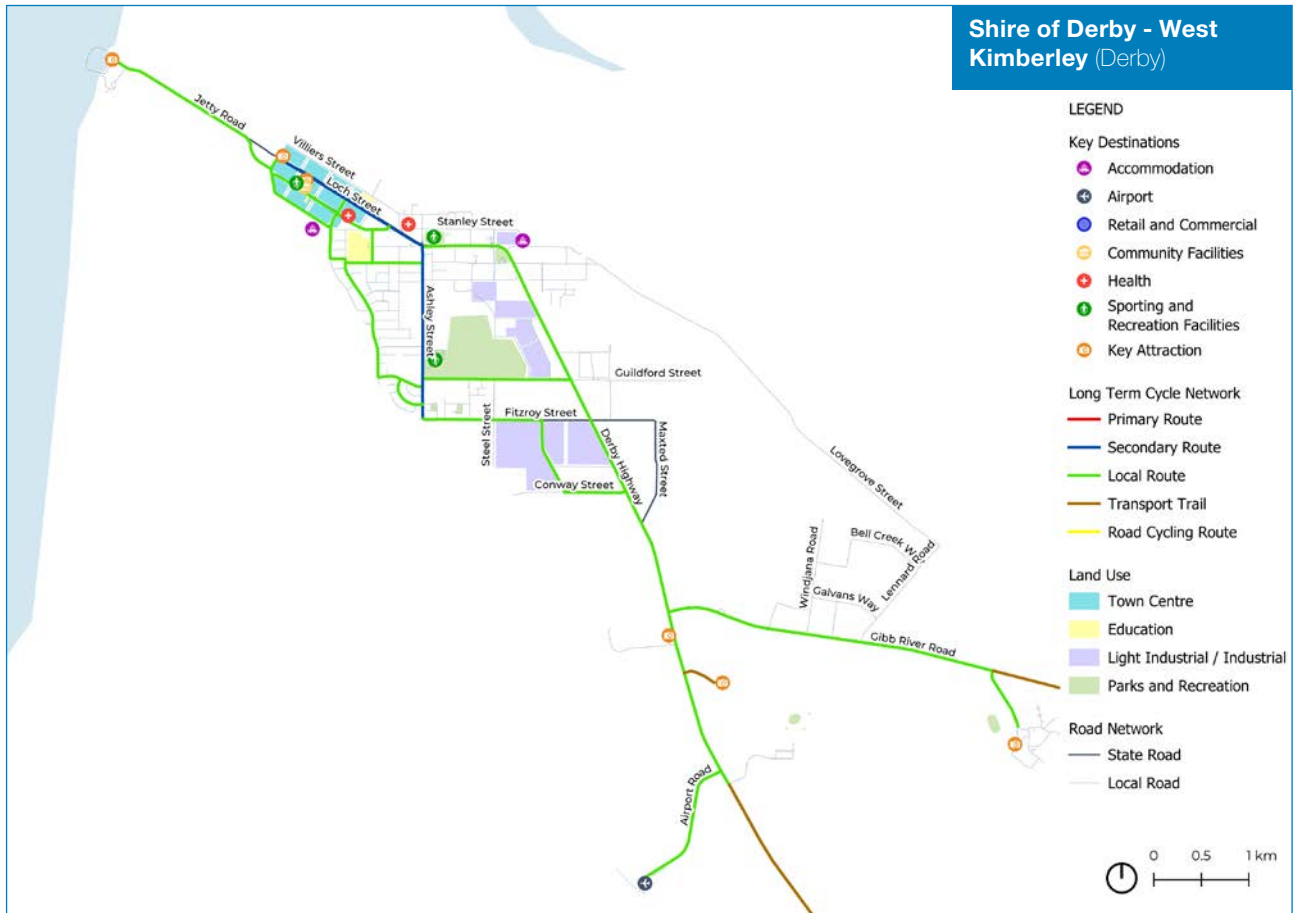
- Connect to local places in our communities, so it's easy to get there by bike.
- Design safe, comfortable and secure access for people of all ages and abilities.
- Use riding as a way to connect with Country, celebrate Aboriginal culture and connect communities.
- Enable young people to ride to school and around the community, or just for fun.
- Provide climate responsive infrastructure, including shade, water and appropriate riding surfaces.
- Improve access to own, maintain, hire and share bicycle equipment.
- Highlight the region's unique history and landmarks through cycling tourism and bike-packing.

Key features of the draft network

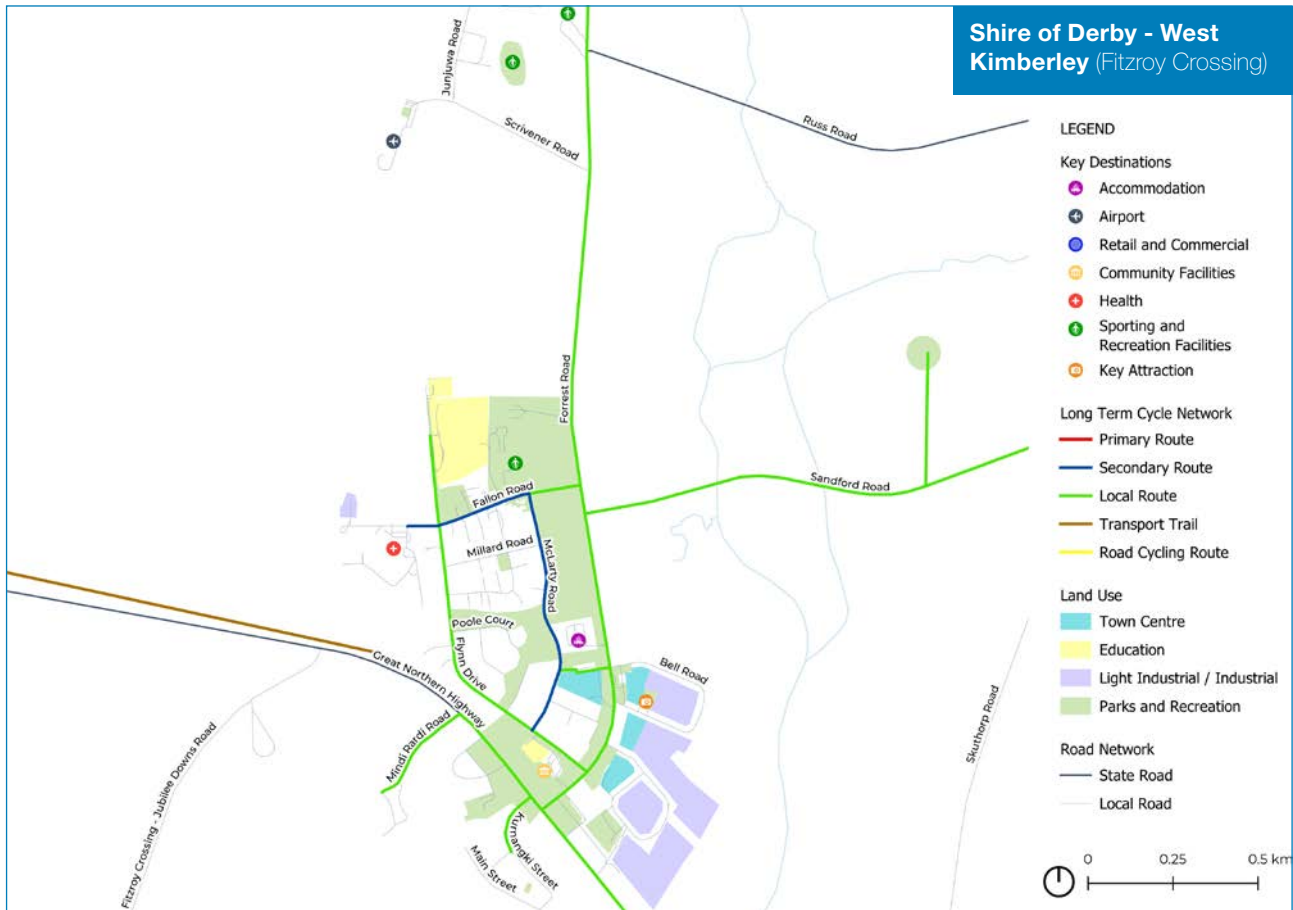
- Connect to shops, work, recreation and other local services and provide end-of-trip facilities.
- Provide safe routes to school and secure bike parking.
- Enhance connectivity to key attractions such as Derby Wharf, Boab Prison Tree and Mowanjum Art and Culture Centre.
- Improve access for Aboriginal communities near Derby and Fitzroy Crossing where appropriate.



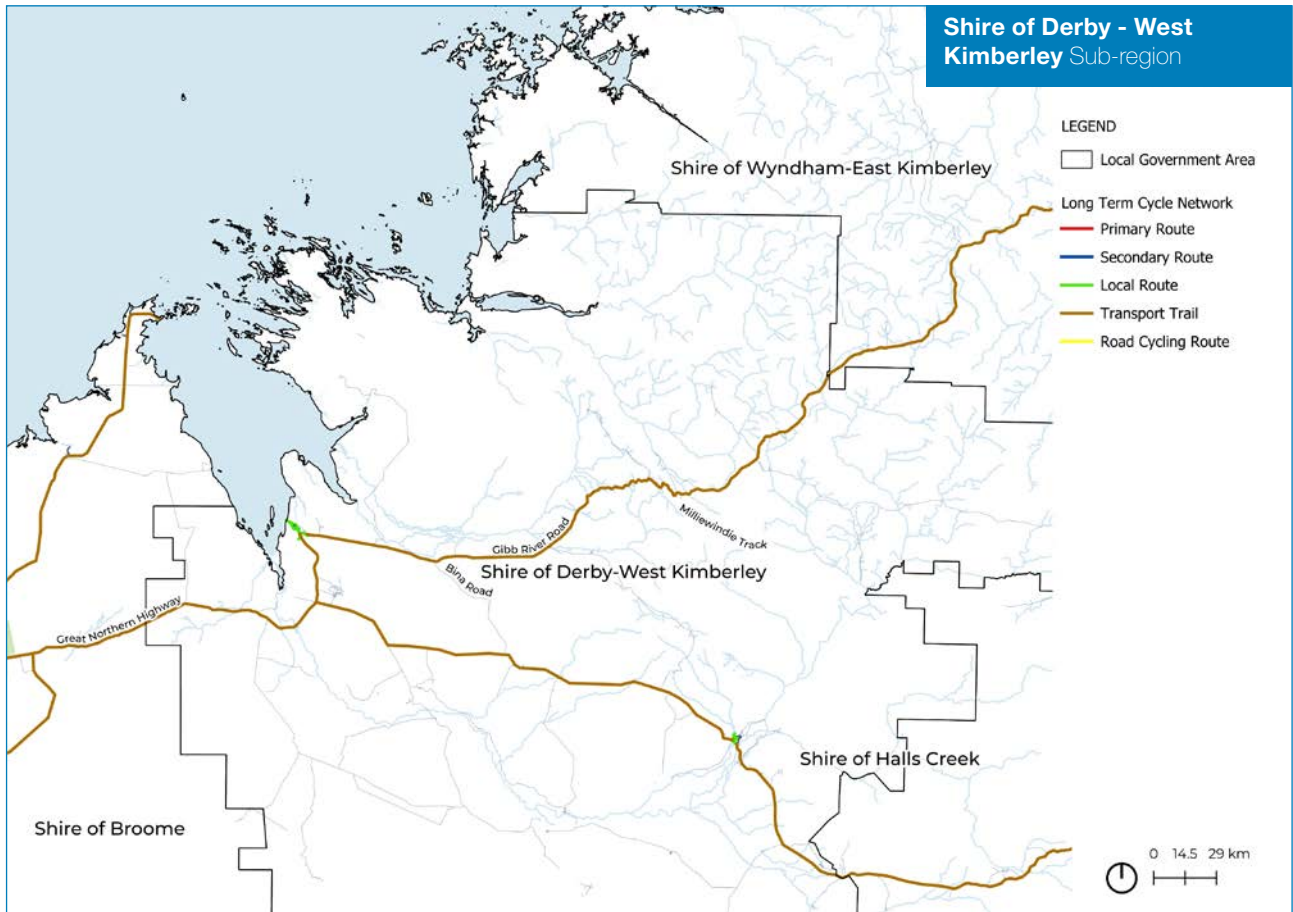
Map 1: Shire of Derby - West Kimberley (Derby)



Map 2: Shire of Derby - West Kimberley (Fitzroy Crossing)



Map 3: Shire of Derby - West Kimberley Sub-region



About the Cycling Network Hierarchy

The maps on pages 2 and 3 identify routes classified by the Western Australian Cycling Network Hierarchy. The WA Cycling Network Hierarchy identifies routes by their function, depending on the type of activities that take place on the route and not on their built form.

The route hierarchy includes:

- Primary Routes
- Secondary Routes
- Local Routes
- Transport Trails
- Road Cycling Routes.

Except for Road Cycling Routes, all levels of the hierarchy are designed to cater for bicycle riders of all ages and abilities.



How you can have your say

- **Online survey** – Visit [My Say Transport](#) to complete a short online survey and share your ideas.
- **In-person survey** – Visit your local government office, library or community resource centre to complete the survey in person.
- **Online community forum** – If you provide feedback, you can opt in to be invited to an online community forum to participate and provide comment on the development of the cycle network (date and time to be confirmed).

- **In-person drop-in session** – Come and say hi to the project team and share your thoughts:

West Kimberley (Broome)

Tuesday 4 June 2024

- Broome Recreation and Aquatic Centre (BRAC): 4.30pm–7pm

Wednesday 5 June 2024

- Short Street Café: 7.30am–9.30am
- Paspaley Plaza, outside Coles: 10am–1pm
- Broome Boulevard, outside Woolworths: 2pm–4pm

East Kimberley (Kununurra)

Thursday 6 June 2024

- Coles, Kununurra: 10am–1pm
- Ord River Sports Club: 4:30 pm–6:30 pm



More information

To learn more about the Kimberley 2050 Cycling Strategy, or any of the 11 regional cycling strategies underway or completed visit our long-term cycle network webpage <https://www.transport.wa.gov.au/activetransport/long-term-cycle-network.asp>