

# **SHIRE OF DERBY/WEST KIMBERLEY MUNICIPAL INVENTORY**

## **HERITAGE SITE ASSESSMENTS**

**Prepared for  
The Shire of Derby/West Kimberley  
June 1995**



**HERITAGE AND CONSERVATION PROFESSIONALS  
in association with  
NATIONAL HERITAGE**

## **CONTENTS**

**The following detailed site assessments  
are contained in this document.**

### **SITES IN OR NEAR TO THE TOWN OF DERBY**

<b>Derby Jetty Tramway</b>	<b>1</b>
<b>Royal Flying Doctor Service House and Office</b>	<b>6</b>
<b>Spinifex Hotel</b>	<b>10</b>
<b>Ah Chee's Bakery and House</b>	<b>13</b>
<b>Kimberley School of the Air</b>	<b>16</b>
<b>69 Clarendon St</b>	<b>18</b>
<b>Derby CWA Hall</b>	<b>21</b>
<b>Derby CWA House</b>	<b>24</b>
<b>Derby Picture Gardens</b>	<b>27</b>
<b>North West Women's Group/ Derby Neighbourhood Centre Shop</b>	<b>29</b>
<b>No. 2 Neville St</b>	<b>31</b>
<b>Derby Stone Quarry</b>	<b>34</b>
<b>Cattle Race, Stock Route and Boab Dinner Tree</b>	<b>36</b>
<b>Wharfinger's House</b>	<b>38</b>
<b>Prison boab Tree</b>	<b>41</b>
<b>Myall's Bore</b>	<b>43</b>
<b>Old Police Gaol</b>	<b>45</b>
<b>Frosty Pool</b>	<b>48</b>
<b>Derby Hospital</b>	<b>50</b>
<b>Holman House</b>	<b>53</b>
<b>Derby Masonic Lodge (Former School)</b>	<b>56</b>

<b>Bungarun (Former Leprosarium)</b>	<b>59</b>
<b>Numbala Nunga (Former Residency site)</b>	<b>63</b>
<b>Tom Street Mission House</b>	<b>65</b>
<b>Old Mowanjum Mission Site</b>	<b>69</b>
<b>House, Lot 266, No. 5 Loch St</b>	<b>71</b>
<b>Shed, Lot 260 Loch St</b>	<b>73</b>
<b>Old Cordial Factory</b>	<b>75</b>
<b>Le Lievre's Store</b>	<b>77</b>
<b>Derby Hostel</b>	<b>79</b>
<b>Woolworths</b>	<b>82</b>
<b>Derby Roman Catholic Church</b>	<b>84</b>
<b>Derby Anglican Church</b>	<b>87</b>
<b>House, Lot 342, No. 28 Rowan St</b>	<b>89</b>
<b>House, Lot 244 Villiers St</b>	<b>91</b>
<b>House, Lot 259 Loch St</b>	<b>93</b>
<b>Shop Fronts Clarendon St</b>	<b>95</b>
<b>St Joseph's Hostel</b>	<b>97</b>
<b>UAM Hostel</b>	<b>99</b>
<b>Lion's Park</b>	<b>101</b>

## **SITES IN OR NEAR TO THE TOWN OF FITZROY CROSSING**

<b>Old Fitzroy Crossing Police Station Precinct</b>	<b>104</b>
<b>Fitzroy Crossing Backpackers Hostel (Former Post Office)</b>	<b>109</b>
<b>Site of Previous AIM Hospital</b>	<b>112</b>
<b>Crossing Inn</b>	<b>114</b>
<b>Low Level River Crossing</b>	<b>117</b>
<b>Fitzroy Crossing Bridge</b>	<b>119</b>
<b>Second School, Buruwa (Former Mission site)</b>	<b>121</b>

## **REGIONAL SITES**

<b>Telegraph Station at Blue Bush Swamp</b>	<b>125</b>
<b>Point Torment</b>	<b>127</b>
<b>Camballin</b>	<b>129</b>
<b>Cave School and Homestead on Go Go Station</b>	<b>131</b>
<b>Old Homestead, Oscar Range Station</b>	<b>133</b>
<b>Old Homestead, Leopold Downs Station</b>	<b>135</b>
<b>Lillmaloora</b>	<b>138</b>
<b>Old Homestead Ruins, Mount Hart Station</b>	<b>141</b>
<b>Donkey Meat Factory</b>	<b>143</b>
<b>Hawkstone Peak, Site of Van Emmerick Air Crash</b>	<b>145</b>
<b>Lukins Bore, Kimberley Downs Station</b>	<b>147</b>
<b>Meatworks, Glenroy Station</b>	<b>149</b>
<b>Yeeda Station</b>	<b>151</b>
<b>Munkayarra</b>	<b>153</b>
<b>Nobbys Well</b>	<b>155</b>



<b>Homestead, Mount Barnett Station</b>	<b>157</b>
<b>Homestead and Gardens, Mount house Station</b>	<b>159</b>
<b>Old Cherabun Station</b>	<b>161</b>
<b>Lveringa Homestead Group</b>	<b>163</b>
<b>Fossil Downs Station</b>	<b>167</b>

**THE FOLLOWING SITES HAVE NOT BEEN ASSESSED DUE TO  
INSUFFICIENT INFORMATION**

**DERBY SITES**

**Site of Former Courthouse**

**Site of Original Telegraph Station**

**REGIONAL SITES**

**Napier Downs Station**

(crash site, homestead and Copper mine)

**Lennard River Homestead**

**Cattleyard, Winjana Gorge**

**Noonkanbah Station**

(World War II airfield and shearing shed)

**Langi Crossing / Willare Bridge**

**Nilli Bubbaca**

(Watering place on stock route, vicinity of Fossil Downs)

**Oobagooma**

(Former police camp and station abandoned circa 1930s)

**Blina**

(Oil production in the 1980s)

**Yampi Sound**

(Koolan and Cockatoo Islands - oil exploration from the 1930s)

**May River Crossing**

**Nerrima Station**

(Site of oil exploration in the 1920s)

**Yabbagoody Well**

**Goodygoody Well**

**Stickland Bay Graveyard**

**Cadjebut**

(zinc mine)

**Tracker Larry's Grave**

## **DERBY SITES**

# **SHIRE OF DERBY/WEST KIMBERLEY MUNICIPAL INVENTORY**

## **HERITAGE SITE ASSESSMENTS**

**Prepared for  
The Shire of Derby/West Kimberley  
June 1995**

**HERITAGE AND CONSERVATION PROFESSIONALS  
First Floor Rear, Murray Mews, 329 Murray Street Perth 6000.  
Postal Address: - P.O. Box 7576 Cloisters Square, Perth, 6850.  
Phone: (09) 481 5021 Fax: (09) 481 5852.**

**in association with**

**NATIONAL HERITAGE  
151 Joel Terrace, Mount Lawley 6050.  
Phone: (09) 272 3308 Fax: (09) 272 2087.**

## **CONSULTANTS**

<b>Rosemary Rosario</b>	<b>B.Arch. Hons ARCUK MPhil (Urban Studies)</b> <b>Architectural Heritage Consultant</b>
<b>Dr Cathie Clement</b>	<b>BA. Hons Ph.D MPhR</b> <b>Historian and Heritage Consultant</b>

## **ACKNOWLEDGEMENTS**

**The consultants would like to acknowledge the generous contribution of the following:**

### **Steering Committee:**

**Morris Stevens Shire of Derby/West Kimberley**  
**Kevin Beere Department of Employment, Education and Training**  
**Pam Masters Derby Tourist Bureau**  
**Maureen Macfarlan Community Representation**  
**Gary Taylor Kimberley Development Commission**

**And all those members of the Kimberley community who contributed time, information and hospitality.**



## INTRODUCTION

The Municipal Heritage Inventory for the Shire of Derby/West Kimberley has been prepared in accordance with the requirements of the *Heritage of Western Australia Act 1990* (Section 45) which requires the Councils of all local authorities in Western Australia to compile and maintain inventories of buildings within their districts which are, or may become, of cultural heritage significance. The municipal inventories must be compiled by early 1995 and must involve a process of public consultation. The Heritage Council of Western Australia provides guidelines for the preparation of municipal inventories and this inventory has been prepared in strict accordance with those guidelines.

The Municipal Inventory comprised two stages. The first stage involved the preparation of the Thematic Framework and the second stage involved the assessment and documentation of the nominated inventory sites. This report is the result of the second stage of the study and contains the inventory site assessments.

The Thematic Framework for the Shire of Derby/West Kimberley was prepared by Dr Cathie Clement and is contained in a separate document, *Shire of Derby/West Kimberley Municipal Inventory Thematic Framework*. The site assessments should be read in conjunction with this document which provides an outline of the history and development of the Shire through time and across a number of themes. Themes used in the framework were those recommended in the Heritage Council guidelines. These are:

- **Demographic settlement and mobility**
- **Transport and communications**
- **Occupations**
- **Social and civic activities**
- **Outside influences**
- **People**

The site assessments are cross-referenced to the pertinent theme for each site.

The assessment of significant sites has been carried out in accordance with the Heritage Council guidelines and the assessment form follows the Heritage Council recommended form. (Appendix A) All assessments include an assessment of the level of heritage significance and recommendations for management. Recommendations are based on Heritage Council management categories provided on the recommended assessment form (Appendix A), but have been adapted to suit the specific requirement of the site and of the Shire of Derby/West Kimberley.

Usually management implementation is the responsibility of the Shire in consultation with the owners of the site. Some very significant sites have been recommended for nomination for entry into the Heritage Council's Register of Heritage Places.

Sites recommended are:

**Derby Jetty Tramway (including the town depot) 1890s**  
**Wharfinger's House Derby 1928**  
**Bungarun (former Leprosarium) 1936**  
**Old Fitzroy Crossing Police Station Precinct 1950-52**  
**Fitzroy Crossing former Post Office Circa 1950s**  
**Fitzroy Crossing Low Level River Crossing 1930s and 1950s**  
**Cave School and Homestead on Go Go Station Old**  
**Homestead, Oscar Range Station**  
**Old Homestead, Leopold Downs Station**  
**Lillmaloora Circa 1880s**  
**Liveringa Homestead Group 1909**  
**Fossil Downs Homestead Group Circa 1940**

Sites should not however be nominated for entry into the State Register of Heritage Places without prior consultation with the owners.

The Municipal Heritage Inventory should not be regarded as a closed document. Additional sites may be included as information becomes available. However sites should not be removed from the list without an appropriate assessment procedure. *The Heritage Act of Western Australia 1990* requires that all municipal inventories be reviewed every four years.



**MUNICIPAL INVENTORY PLACE RECORD FORM  
SHIRE OF DERBY / WEST KIMBERLEY**

**DERBY JETTY TRAMWAY**

**L.G.A. Site No.**

**HCWA No.**

**ASSESSED BY**

**Name** Heritage and Conservation Professionals

**Contact details** PO Box 7576 Cloisters Square, Perth, 6850. Ph. (09) 4815021.

**Date** Nov. 1994.

**Review**

**Owner/Occupier consulted (Y/N)** Yes

**Person** Shire of Derby/West Kimberley **Date**

**PHOTOGRAPH**

**Date** Nov 1994



**Derby Woolshed 1900 and 1957**

**NAME ADDRESS & OWNERSHIP OF THE PLACE**

**Name of Place** Derby Jetty Tramway

**Former/Other Names**

**Address/Location/Map Reference** Loch St. Derby.

**Owners Name** Department of Transport

**Contact details** PO Box 94 Derby; Fax. (091) 911221; Ph. (091) 911433.

**Occupied** No

**Public Access** Yes

## **DESCRIPTION OF THE PLACE AND ITS SETTING**

The Derby Tramway was constructed in 1885/6 across the causeway from the town to the existing jetty. The jetty and tramway were upgraded in 1893. In the 1890s the tramway was extended up Loch and Delawarr Streets to the quarry, probably for the purpose of transporting fill for the upgrading of the causeway. Documents indicate various changes in the extent of the tramway over the period of its history but it is likely that for the major part of the twentieth century only the section between the Johnston and Loch Streets intersection and the jetty remained in use. In the 1950s some of the remaining track was removed, leaving only the portion required for shunting purposes extending up Loch Street. In 1963 a new jetty incorporating tramway facilities was constructed. This tramway terminated at a new goods yard located adjacent to the jetty and the line across the causeway was no longer used.

Various buildings related to the tramway have been constructed throughout the period of its history. The main town depot associated with the tramway is located at the intersection of Loch and Elder Streets and from here the tramway extended across the causeway. Various buildings have been constructed in the town depot of which two remain. The existing woolshed was originally constructed in 1900 and underwent significant alterations in 1957. The existing goods shed was constructed in 1957 as an extension to an earlier goods shed dating from circa 1890s which no longer exists. The goods shed in the goods yard adjacent to the jetty was relocated from Wyndham in 1962.

Early trams were horse drawn and Clydesdale horses came to be associated with the tramway. In 1938 the first diesel engine is believed to have been used in Derby. No records have been found to indicate the use of steam engines.

## **BUILDING DETAILS**

**Type** Industrial Building - Woolshed

**Construction Date(s)** 1900; 1957      **Design Date** 1900; 1957

**Sources for dates** PWD Drawings

**Original use** Woolshed      **Later / Current use(s)**

**Construction materials** Timber frame; corrugated iron walls and roof

**Alterations** Rebuilt with alterations 1957

**Intactness of fabric** Fair, some fabric remaining from 1900, has lost timber platform

**Condition** Fair - Requires conservation

**Architect / designer / builder** PWD

**BUILDING DETAILS**

**Type** Industrial Building Goods Shed

**Construction Date(s)** Circa 1890s (demolished); 1957 **Design Date** 1957

**Sources for dates** PWD drawings

**Original use** Goods Shed

**Later / Current use(s)** Storage (Scouts)

**Construction materials** Steel frame; corrugated iron walls and roof

**Alterations** Constructed 1957 as extension of earlier building subsequently demolished

**Intactness of fabric** Good

**Condition** Fair - Requires conservation

**Architect / designer / builder** PWD

**SITE TYPE**

Jetty Tramway and Goods Sheds

**STATEMENT OF SIGNIFICANCE**

The Derby tramway is significant representing the history of Derby as a port town from the 1880s to the present. The tramway was integral to the development of both the town of Derby and its hinterland and it was significant in the history of the pastoral industry in the region. The Derby tramway is also significant for its representation of the history of the development of transport systems in north of the state from the 1880s.

**SUPPORTING INFORMATION**

**Photographs** Attached

**Bibliography**

Phillipa Uhe; *Survey of Railway Heritage North of the 26th Parallel*; National Trust of Australia (WA.) 1994.

**Local knowledge**

Ian Crimp and Ann Godfrey, (Derby Photographics Ph. 091 931258)

**HISTORIC THEME AND SUB THEME**

Transport and communications

**PREVIOUS LISTINGS****MANAGEMENT**

Highest level of protection appropriate: recommended for entry into the State Register of Heritage Places; provide maximum encouragement to the owner to conserve the significance of the place.

Prepare a conservation plan for the tramway and implement a program for the maintenance and conservation of remaining structures, equipment, railway tracks, goods yard and other elements relating to the tramway.

Consider the tramway as an integral part of the port system in terms of future development for interpretive or tourism purposes. It should be considered in association with proposals for the causeway, the wharf, the cattle race, and the stock route to Myall's Bore.

#### **OTHER SITE DETAILS**

**C/T : Vol/Folio**

**Lot/Location**

**Diagram/Plan**

**Reserve No.**

**Vesting**

**Purpose**

**Leases** Land leased to Shire of Derby/West Kimberley.

#### **NOTES**

Recommendations for the conservation and maintenance of the tramway and remaining structures are being prepared for the Shire of Derby/West Kimberley in association with the Municipal Inventory program.



**Derby Goods Shed 1890s (demolished) 1957.**



**Shed Relocated from Wyndham Circa 1962**

**MUNICIPAL INVENTORY PLACE RECORD FORM  
SHIRE OF DERBY / WEST KIMBERLEY**

**ROYAL FLYING DOCTOR SERVICE  
HOUSE AND OFFICE DERBY**

**L.G.A. Site No.**

**HCWA No.**

**ASSESSED BY**

**Name** Heritage and Conservation Professionals

**Contact details** PO Box 7576 Cloisters Square, Perth, 6850. Ph. (09) 4815021.

**Date** Nov. 1994.

**Review**

**PHOTOGRAPH**

**Date** Nov 1994



**RFDS Office 1955**

**NAME ADDRESS & OWNERSHIP OF THE PLACE**

**Name of Place** Royal Flying Doctor Service, House and Office

**Former/Other Names**

**Address/Location/Map Reference** Clarendon St, Derby.

**Owners Name** Royal Flying Doctor Service (Victorian Section)

**Contact details**

**Occupied** Yes

**Public Access** Access to office not to house

## **DESCRIPTION OF THE PLACE AND ITS SETTING**

The Victorian Section of the Flying Doctor Service (The Royal prefix was added in 1955) commenced operations at Wyndham in 1934. The citizens of Victoria adopted the Kimberley area to support as that State had no large outback population. The Kimberley Base was transferred to Halls Creek during the Second World War, from 1942-46. The West Kimberley base was opened in Derby in 1955 and the Wyndham base ceased operations in 1990.

The Royal Flying Doctor Service Radio Station office and the adjacent house were opened on July 21st 1955 by Her Excellency Lady Slim. The house was erected as a result of a donation by Mrs Janet Biddlecombe of Golf Hill Victoria. (Dedication plaque).

Both the house and the office are timber framed buildings typical of buildings constructed in Derby in the 1950s. The walls are clad with asbestos cement sheeting and the roofs are of corrugated iron with timber storm battens. Both the office building and the house have been altered from the original. The office contains a significant display including items relating to the history of the Flying Doctor Service and radio equipment. The existing radio equipment dates from 1972.

### **BUILDING DETAILS Royal Flying Doctor Service Office**

**Type** Service Building

**Construction Date(s)** 1955

**Sources for dates** Plaque

**Original use** Radio Station

**Later / Current use(s)** Radio Station

**Construction materials** Timber frame. asbestos sheets, iron

**Alterations** Various

**Intactness of fabric** Good

**Condition** Good

**Architect / designer / builder**

### **BUILDING DETAILS Royal Flying Doctor Service House**

**Type** Service Building

**Construction Date(s)** 1955

**Sources for dates** Plaque

**Original use** Radio Station

**Later / Current use(s)** Radio Station

**Construction materials** Timber frame. asbestos sheets, iron

**Alterations** Various

**Intactness of fabric** Good

**Condition** Good

**Architect / designer / builder**

## **SITE TYPE**

Group of community service buildings



## **STATEMENT OF SIGNIFICANCE**

The Derby headquarters of the Royal Flying Doctor Service (Victorian Section) including the radio station and adjacent residence, is of social and historic significance representing the role of the Flying Doctor in the Kimberley community from the 1930s and in Derby from the 1950s. They are an important aspect of the history of the provision of medical services to the remote areas of Australia. They are particularly significant to the people of the Kimberley and to the people of Victoria who have assisted in their support throughout the history of the service in the region. They are also a significant component in the aviation history of Australia.

## **SUPPORTING INFORMATION**

### **Photographs**

### **Bibliography**

Information sheets provided by RFDS Office, Derby

### **Local knowledge**

Pam Masters, Derby Tourist Bureau Manager

## **HISTORIC THEME AND SUB THEME**

Transport and Communications

## **PREVIOUS LISTINGS**

## **MANAGEMENT**

Retain and conserve if possible; endeavour to conserve the significance of the place through the provisions of the town planning scheme; photographically record the place prior to any major redevelopment or demolition.

The Royal Flying Doctor Service office and house are both of social and historic significance. However the actual buildings whilst representative of typical 1950s buildings in Derby, are not of great significance in themselves. The buildings could be altered without loss of significance to the place. However of great significance are the dedication plaques attached to the building which should be retained and conserved and also any historic equipment especially radio equipment, relating to the Royal Flying Doctor Service that remains. These should be retained and conserved. The continuing use of the site by the Royal Flying Doctor Service is significant.

## **OTHER SITE DETAILS**

**C/T : Vol/Folio**

**Lot/Location**

**Diagram/Plan**

**Reserve No.**

**Vesting**

**Purpose**

**Leases**

## **NOTES**





**RFDS House 1955**

**MUNICIPAL INVENTORY PLACE RECORD FORM  
SHIRE OF DERBY / WEST KIMBERLEY**

**SPINIFEX HOTEL**

**L.G.A. Site No.**

**HCWA No.**

**ASSESSED BY**

**Name** Heritage and Conservation Professionals

**Contact details** PO Box 7576 Cloisters Square, Perth, 6850. Ph. (09) 4815021.

**Date** Nov. 1994.

**Review**

**Owner/Occupier consulted (Y/N)**

**Person**

**Date**

**PHOTOGRAPH**

**Date** Nov 1994



**NAME ADDRESS & OWNERSHIP OF THE PLACE**

**Name of Place** Spinifex Hotel

**Former/Other Names** Shy Pooh; Club Hotel

**Address/Location/Map Reference** Lots 321 and 322 Clarendon St, Derby.

**Owners Name**

**Contact details**

**Occupied** Yes

**Public Access** Yes

## **DESCRIPTION OF THE PLACE AND ITS SETTING**

The Club Hotel is recorded to have existed on the site of the present day Spinifex Hotel in 1888/1890. (Thematic Framework)

A hotel on the site circa 1900 was known locally as the Shy Pooh, however the name Club Hotel was still in use in the 1960s.

The existing building was constructed in 1959/60. The original cellar which was located under the existing lounge bar was filled in 1959. The roof was replaced in 1993 after the earlier roof blew off. The hotel was owned and run independently until the 1960s when it was purchased by the Swan Brewery, however it has since reverted to independent ownership.

The hotel is well known in the region for the now famous Boxing Day Sports which feature such unique events as cockroach races, frog races, jelly eating, stubby sucking etc.

## **BUILDING DETAILS**

**Type** Hotel

**Construction Date(s)** 1959/60

**Sources for dates** Community information

**Original use** Hotel **Later / Current use(s)** Hotel

**Construction materials** Corrugated iron walls and roof

**Alterations** New roof 1993

**Intactness of fabric** Good

**Condition** Good

**Architect / designer / builder** Not Known

## **SITE TYPE**

Hotel

## **STATEMENT OF SIGNIFICANCE**

The Spinifex Hotel and site are of social significance reflecting the continuous use of the site as an hotel since the 1880s/90s. The hotel has been the meeting place of a diverse cross section of members of the Derby community. The Boxing Day Sports is a now famous local event linked with the hotel.

**SUPPORTING INFORMATION****Photographs****Bibliography****Local knowledge**

Marie Foster

**HISTORIC THEME AND SUB THEME**

Social and civic activities

**PREVIOUS LISTINGS****MANAGEMENT**

Retain and conserve if possible; endeavour to conserve the significance of the place through the provisions of the town planning scheme; photographically record the place prior to any major redevelopment or demolition.

The use of the site for hotel purposes is significant and should be protected in any future development.

**OTHER SITE DETAILS****C/T : Vol/Folio****Lot/Location****Diagram/Plan****Reserve No.****Vesting****Purpose****Leases****NOTES**

**MUNICIPAL INVENTORY PLACE RECORD FORM  
SHIRE OF DERBY / WEST KIMBERLEY**

**AH CHEE'S BAKERY AND HOUSE**

**L.G.A. Site No.**

**HCWA No.**

**ASSESSED BY**

**Name** Heritage and Conservation Professionals

**Contact details** PO Box 7576 Cloisters Square, Perth, 6850. Ph. (09) 4815021.

**Date** Nov. 1994.

**Review**

**Owner/Occupier consulted (Y/N)** Nominated by the owner

**Person** Mr R. Ah Chee

**Date** Feb. 1995

**PHOTOGRAPH**

**Date** Nov 1994



**NAME ADDRESS & OWNERSHIP OF THE PLACE**

**Name of Place** Bakery and house

**Former/Other Names**

**Address/Location/Map Reference** Lot 326, No. 20 Clarendon St, Derby.

**Owners Name** Mr R. Ah Chee

**Contact details** as above

**Occupied** Yes

**Public Access** Restricted

## **DESCRIPTION OF THE PLACE AND ITS SETTING**

Lot 326 Clarendon St was purchased circa 1910-15 by Owen Ah Chee who first arrived in Darwin in 1892 from Hynum near the Hong Kong border. He moved to Derby and built a house on the Clarendon St property which comprised two rooms, an open kitchen at the rear and surrounding verandah which was enclosed with tin shutters. Adjoining the rear of the building was a bakery which baked bread which was sold from the front verandah. As the size of the family grew, the verandah was utilised for sleeping and a shop constructed adjacent to the house. The building was adapted and extended over time as new rooms were added and verandahs enclosed.

In 1973 the bakery at the rear of the premises and the shop were closed and in 1983 the bakery was demolished. Today the original two rooms and kitchen still form the nucleus of the house and although much of the cladding has been replaced, the framework is still original. The house has been in the continuous ownership of the Ah Chee family.

## **BUILDING DETAILS**

**Type** Residential/business premises

**Construction Date(s)** Circa 1910-15

**Sources for dates** Mr R. Ah Chee

**Original use** Residence and bakery **Later / Current use(s)** Residence

**Construction materials** Timber frame, corrugated iron, fibro sheeting.

**Alterations** Extensive

**Intactness of fabric** Framing of original two rooms remains intact

**Condition** Not known

**Architect / designer / builder** Mr Owen Ah Chee

## **SITE TYPE**

Residential building

## **STATEMENT OF SIGNIFICANCE**

The house on lot 326 Clarendon St Derby is of social and historic significance to the history of the development of Derby representing the site of the bakery business run by the Ah Chee family for over fifty years from circa 1910-15 until the 1970s. The building that exists on the site today is significant as it contains the original two rooms and kitchen constructed by Mr Owen Ah Chee circa 1910-15. The site is significant for its associations with the Ah Chee family, prominent in the development of Derby.

## **SUPPORTING INFORMATION**

**Photographs**

**Bibliography**

**Local knowledge**

Mr Ronald Ah Chee, owner of 20 Clarendon St, Derby

**HISTORIC THEME AND SUB THEME**

Demographic settlement and mobility  
Occupations

**PREVIOUS LISTINGS****MANAGEMENT**

Retain and conserve if possible; endeavour to conserve the significance of the place through the provisions of the town planning scheme; photographically record the place prior to any major redevelopment or demolition.

Endeavour to conserve the original section of the building in any future development of the site. The site should have a plaque erected with the permission of the owners to indicate the history and significance of the property.

**OTHER SITE DETAILS**

**C/T : Vol/Folio**

**Lot/Location**

**Diagram/Plan**

**Reserve No.**

**Vesting**

**Purpose**

**Leases**

**NOTES**

**MUNICIPAL INVENTORY PLACE RECORD FORM  
SHIRE OF DERBY / WEST KIMBERLEY**

**KIMBERLEY SCHOOL OF THE AIR**

**L.G.A. Site No.**

**HCWA No.**

**ASSESSED BY**

**Name** Heritage and Conservation Professionals

**Contact details** PO Box 7576 Cloisters Square, Perth, 6850. Ph. (09) 4815021.

**Date** Nov. 1994.

**Review**

**Owner/Occupier consulted (Y/N)**

**Person**

**Date**

**PHOTOGRAPH**

**Date** Not photographed

**NAME ADDRESS & OWNERSHIP OF THE PLACE**

**Name of Place** Kimberley School of the Air

**Former/Other Names**

**Address/Location/Map Reference** Located in the grounds of the Derby High School

**Owners Name** Education Department of WA

**Contact details**

**Occupied** Yes

**Public Access** Restricted

**DESCRIPTION OF THE PLACE AND ITS SETTING**

The Kimberley School of the Air was established in 1960 at the old Derby airport (near the Royal Flying Doctor base). It was transferred to Kimberley High School and officially opened in 1982. The school is located in demountable buildings which contain two broadcasting rooms, general work areas and office. An additional building was added in 1987 containing teachers work areas and a store room. There is direct communication between the students and the teachers via two-way radio which has a split frequency so that the students can hear each other.

**SITE TYPE**

Education facility

**STATEMENT OF SIGNIFICANCE**

The Kimberley School of the Air is of social and scientific significance to the Kimberley community. The buildings that house the service are not significant, however the location of the school on the Derby High School site is significant as is the original site of the school at the old Derby airport.



**SUPPORTING INFORMATION****Photographs****Bibliography****Local knowledge**

Information provided by Marie Foster

**HISTORIC THEME AND SUB THEME**

Transport and communications

**PREVIOUS LISTINGS****MANAGEMENT**

Site of significant activity. Recognise for example with a plaque. Also recognise original site (old Derby airport) with interpretive material and a plaque. Assess and conserve radio equipment, literature and documents relating to the School of the Air service.

**OTHER SITE DETAILS****C/T : Vol/Folio****Lot/Location****Diagram/Plan****Reserve No.****Vesting****Purpose****Leases****NOTES**

**MUNICIPAL INVENTORY PLACE RECORD FORM  
SHIRE OF DERBY / WEST KIMBERLEY**

**69 CLARENDON ST DERBY**

**L.G.A. Site No.**

**HCWA No.**

**ASSESSED BY**

**Name** Heritage and Conservation Professionals

**Contact details** PO Box 7576 Cloisters Square, Perth, 6850. Ph. (09) 4815021.

**Date** Nov. 1994.

**Review**

**Owner/Occupier consulted (Y/N)**

**Person**

**Date**

**PHOTOGRAPH**

**Date** Nov 1994



**69 Clarendon St, Derby**

**NAME ADDRESS & OWNERSHIP OF THE PLACE**

**Name of Place** House and Shop (Raintree Craft Cottage)

**Former/Other Names**

**Address/Location/Map Reference** 69 Clarendon St, Derby.

**Owners Name** Shire of Derby/West Kimberley

**Contact details**

**Occupied** Yes

**Public Access** No

## DESCRIPTION OF THE PLACE AND ITS SETTING

The house at 69 Clarendon Street is a typical example of a house erected in the north of WA by the State Housing Commission in the 1950s during the period of expansion following World War II. The house is one of a group constructed along Loch and Clarendon Sts circa 1953. The house is constructed of timber frame on concrete stumps and clad with asbestos cement sheet linings with a corrugated iron roof. The house has had minor alterations including enclosure of part of the back verandah to extend the bathroom in the 1970s.

From 1959 the house was occupied by a Mrs Preest and her sons after her husband was drowned tragically at Willare. He is believed to have been taken by a crocodile. Mrs Preest had the adjacent shop constructed in the early 1960s and used it as a tuck shop providing home made items to the local school children. The shop is constructed of timber frame with a corrugated iron roof and verandah.

The property was purchased by the Shire and used as the residence for the manager of the Tourist Bureau from 1980.

## BUILDING DETAILS

**Type** House and shop

**Construction Date(s)** Circa 1953 and circa 1960

**Design Date**

**Sources for dates** Community information

**Original use** Residence and tuck shop and craft shop

**Later / Current use(s)**

Residence

**Construction materials** Timber frame, concrete stumps, asbestos sheets, corrugated iron roof

**Alterations** Bathroom

**Intactness of fabric** Good

**Condition** Good

**Architect / designer / builder** State Housing Commission

## SITE TYPE

Public Housing example

## STATEMENT OF SIGNIFICANCE

69 Clarendon St is significant as a typical example of a house built by the State Housing Commission in Derby in the 1950s during the period of expansion following World War II. The adjacent shop is also representative of life in the town in the 1950s and 60s.

## SUPPORTING INFORMATION

**Photographs**

**Bibliography**

**Local knowledge**

Pam Masters, Derby Tourist Bureau Manager

**HISTORIC THEME AND SUB THEME**

Demographic settlement and mobility

**PREVIOUS LISTINGS****MANAGEMENT**

Conserve as typical example of a house built by the State Housing Commission in Derby in the 1950s. Retain the building intact without further alterations for interpretive purposes as a means of illustrating the level of accommodation typical of the post World War II period.

**OTHER SITE DETAILS**

C/T : Vol/Folio

Lot/Location

Diagram/Plan

Reserve No.

Vesting

Purpose

Leases

**NOTES**

Shop adjacent to 69 Clarendon St

**MUNICIPAL INVENTORY PLACE RECORD FORM  
SHIRE OF DERBY / WEST KIMBERLEY**

**DERBY CWA HALL**

**L.G.A. Site No.**

**HCWA No.**

**ASSESSED BY**

**Name** Heritage and Conservation Professionals

**Contact details** PO Box 7576 Cloisters Square, Perth, 6850. Ph. (09) 4815021.

**Date** Nov. 1994.

**Review**

**Owner/Occupier consulted (Y/N)**

**Person**

**Date**

**PHOTOGRAPH**

**Date** Nov 1994



**NAME ADDRESS & OWNERSHIP OF THE PLACE**

**Name of Place** Derby CWA Hall

**Former/Other Names**

**Address/Location/Map Reference** Marmion St, Derby

**Owners Name** Derby Town Branch of the CWA

**Contact details** Carmel Moore 091.911231

**Occupied** CWA

**Public Access** Restricted

## **DESCRIPTION OF THE PLACE AND ITS SETTING**

Derby has two branches of the CWA. The town branch founded in 1954 and the air branch. The CWA Hall was built by the Town Branch circa the 1960s when membership numbers exceeded forty women. The CWA assisted women in the community to cope with the isolation from family and friends at a time when few government support agencies were available. The hall is an expression of this role. It is a timber framed building with asbestos sheet wall linings and a corrugated iron roof.

## **BUILDING DETAILS**

**Type** Community Hall

**Construction Date(s)** Circa 1960      **Design Date**

**Sources for dates** Community information

**Original use** Social events      **Later / Current use(s)** Social events

**Construction materials** Timber frame, asbestos and iron

**Alterations** Not Known

**Intactness of fabric** Not known

**Condition** Good

**Architect / designer / builder**

## **SITE TYPE**

Community service facility

## **STATEMENT OF SIGNIFICANCE**

The CWA Hall represents the role of the CWA in the lives of women in rural areas of Australia. In Derby the CWA has played a significant social and support role in the lives of women in the Kimberley community since the 1950s.

## **SUPPORTING INFORMATION**

**Photographs**

**Bibliography**

**Local knowledge**

Pam Masters, Derby Tourist Bureau Manager

## **HISTORIC THEME AND SUB THEME**

Social and civic activities

## **PREVIOUS LISTINGS**

## **MANAGEMENT**

Retain and conserve if possible; endeavour to conserve the significance of the place through the provisions of the town planning scheme; photographically record the place prior to any major redevelopment or demolition.

Endeavour to retain the significance of the site by ensuring continued use for social service activities. The role of the CWA should be recognised with a plaque should the use of the site change in the future.

**OTHER SITE DETAILS****C/T : Vol/Folio****Diagram/Plan****Reserve No.****Purpose****Leases****Lot/Location****Vesting****NOTES**

**MUNICIPAL INVENTORY PLACE RECORD FORM  
SHIRE OF DERBY / WEST KIMBERLEY**

**DERBY CWA HOUSE**

**L.G.A. Site No.**

**HCWA No.**

**ASSESSED BY**

**Name** Heritage and Conservation Professionals

**Contact details** PO Box 7576 Cloisters Square, Perth, 6850. Ph. (09) 4815021.

**Date** Nov. 1994.

**Review**

**Owner/Occupier consulted (Y/N)**

**Person**

**Date**

**PHOTOGRAPH**

**Date** Nov 1994



**NAME ADDRESS & OWNERSHIP OF THE PLACE**

**Name of Place** Derby CWA House

**Former/Other Names**

**Address/Location/Map Reference** Clarendon St, Derby

**Owners Name** Derby Air Branch of the CWA

**Contact details**

**Occupied** CWA

**Public Access** Restricted



## DESCRIPTION OF THE PLACE AND ITS SETTING

Derby has two branches of the CWA. The town branch founded in 1954 and the air branch. The CWA House was built by the Air Branch in 1959 to provide accommodation for women from the rural areas. The CWA assisted women in the community to cope with the isolation from family and friends at a time when few government support agencies were available. The house is an expression of this role. It is a timber framed building with asbestos sheet wall linings and a corrugated iron roof.

## BUILDING DETAILS

**Type** Community House

**Construction Date(s)** 1959

**Design Date**

**Sources for dates** Community information

**Original use** Accommodation

**Later / Current use(s)** Accommodation

**Construction materials** Timber frame, asbestos and iron

**Alterations** Not Known

**Intactness of fabric** Not known

**Condition** Good

**Architect / designer / builder**

## SITE TYPE

Community service facility

## STATEMENT OF SIGNIFICANCE

The CWA House represents the role of the CWA in the lives of women in rural areas of Australia. In Derby/West Kimberley the CWA has played a significant social and support role in the lives of women in the Kimberley community since the 1950s.

## SUPPORTING INFORMATION

**Photographs**

**Bibliography**

**Local knowledge**

Pam Masters, Derby Tourist Bureau Manager

## HISTORIC THEME AND SUB THEME

Social and civic activities

## PREVIOUS LISTINGS

## MANAGEMENT

Retain and conserve if possible; endeavour to conserve the significance of the place through the provisions of the town planning scheme; photographically record the place prior to any major redevelopment or demolition.

Endeavour to retain the significance of the site by ensuring continued use for social service activities. The role of the CWA should be recognised with a plaque should the use of the site change in the future.

**OTHER SITE DETAILS****C/T : Vol/Folio****Lot/Location****Diagram/Plan****Reserve No.****Vesting****Purpose****Leases****NOTES**

**MUNICIPAL INVENTORY PLACE RECORD FORM  
SHIRE OF DERBY / WEST KIMBERLEY**

**DERBY PICTURE GARDENS**

**L.G.A. Site No.**

**HCWA No.**

**ASSESSED BY**

**Name** Heritage and Conservation Professionals

**Contact details** PO Box 7576 Cloisters Square, Perth, 6850. Ph. (09) 4815021.

**Date** Nov. 1994.

**Review**

**Owner/Occupier consulted (Y/N)**

**Person**

**Date**

**PHOTOGRAPH**

**Date** Nov 1994



**NAME ADDRESS & OWNERSHIP OF THE PLACE**

**Name of Place** Derby Picture Gardens

**Former/Other Names**

**Address/Location/Map Reference** Loch St, Derby

**Owners Name** Wanang Ngari

**Contact details**

**Occupied** Yes

**Public Access** Restricted

## **DESCRIPTION OF THE PLACE AND ITS SETTING**

The Derby Picture Gardens were constructed in the 1940s. The projection equipment which is still located in the projection room, was purchased second hand and dates from the 1930s. In the 1990s the ownership of the Picture Gardens was acquired by Wanang Ngari. The Derby Lions Club showed pictures at the gardens in 1991/2.

The picture gardens consists of a bitumen enclosure surrounded by a galvanised iron fence. Structures include a toilet block, projection room and snack bar. Patrons sit on movable canvas seating. The gardens were renovated in 1994.

## **SITE TYPE**

Picture Gardens

## **STATEMENT OF SIGNIFICANCE**

The Derby Picture Gardens have been significant to the social life of Derby residents from the 1940s. They represent a type of entertainment facility once common in Western Australia but which is now found only rarely.

## **SUPPORTING INFORMATION**

Photographs

Bibliography

Local knowledge

## **HISTORIC THEME AND SUB THEME**

Social and civic activities

## **PREVIOUS LISTINGS**

## **MANAGEMENT**

Retain and conserve if possible; endeavour to conserve the significance of the place through the provisions of the town planning scheme; photographically record the place prior to any major redevelopment or demolition.

## **OTHER SITE DETAILS**

C/T : Vol/Folio

Lot/Location

Diagram/Plan

Reserve No.

Vesting

Purpose

Leases

## **NOTES**

**MUNICIPAL INVENTORY PLACE RECORD FORM  
SHIRE OF DERBY / WEST KIMBERLEY**

**NORTH WEST WOMEN'S GROUP/  
DERBY NEIGHBOURHOOD CENTRE SHOP**

**L.G.A. Site No.**

**HCWA No.**

**ASSESSED BY**

**Name** Heritage and Conservation Professionals

**Contact details** PO Box 7576 Cloisters Square, Perth, 6850. Ph. (09) 4815021.

**Date** Nov. 1994.

**Review**

**Owner/Occupier consulted (Y/N)**

**Person**

**Date**

**PHOTOGRAPH**

**Date** Nov. 1994



**NAME ADDRESS & OWNERSHIP OF THE PLACE**

**Name of Place** North West Women's Group/ Derby Neighbourhood Centre Shop

**Former/Other Names** Various former names

**Address/Location/Map Reference** Lot 6 Hardman St, Derby (Cnr Hardman and Clarendon Sts)

**Owners Name** Department of Community Development

**Contact details** Maree Delacy 091.911577

**Occupied** Yes

**Public Access** Restricted

## **DESCRIPTION OF THE PLACE AND ITS SETTING**

The original house was constructed circa 1958/9 by Lou Kent for Alma Huddleston. The shop was added in the late 1960s and was the first shoe shop in Derby. The house and shop are of timber frame construction with fibrolite wall lining (asbestos sheets) and an iron roof typical of buildings constructed during the period of expansion in the town in the 1950s and 60s. The house when originally constructed was considered one of the smartest in the town.

## **BUILDING DETAILS**

**Type** House/shop

**Construction Date(s)** 1958/9 and 1960s **Design Date**

**Sources for dates** Community information

**Original use** house and shop **Later / Current use(s)** house and shop

**Construction materials** Timber frame, fibro and iron

**Alterations** Not known

**Intactness of fabric** Good

**Condition** Good

**Architect / designer / builder** Lou Kent

## **SITE TYPE**

Residential building with shop

## **STATEMENT OF SIGNIFICANCE**

Significant to the development of Derby reflecting the period of expansion of the town in the 1950s and 60s and also reflecting the development of Clarendon St as the commercial centre of the town.

## **SUPPORTING INFORMATION**

**Photographs**

**Bibliography**

**Local knowledge**

Pam Masters, Derby Tourist Bureau

## **HISTORIC THEME AND SUB THEME**

Demographic settlement and mobility

## **PREVIOUS LISTINGS**

## **MANAGEMENT**

Retain and conserve if possible; endeavour to conserve the significance of the place through the provisions of the town planning scheme; photographically record the place prior to any major redevelopment or demolition.

## **OTHER SITE DETAILS**

**C/T : Vol/Folio**

**Lot/Location**

**Diagram/Plan**

**Reserve No.**

**Vesting**

**Purpose**

**Leases**

**MUNICIPAL INVENTORY PLACE RECORD FORM  
SHIRE OF DERBY / WEST KIMBERLEY**

**NO. 2 NEVILLE ST**

**L.G.A. Site No.**

**HCWA No.**

**ASSESSED BY**

**Name** Heritage and Conservation Professionals

**Contact details** PO Box 7576 Cloisters Square, Perth, 6850. Ph. (09) 4815021.

**Date** Nov. 1994.

**Review**

**Owner/Occupier consulted (Y/N)** Yes

**Person** Mrs Wells

**Date** Nov. 1994

**PHOTOGRAPH**

**Date** Nov. 1994



**NAME ADDRESS & OWNERSHIP OF THE PLACE**

**Name of Place** No. 2 Neville St, Derby, Mrs Wells House

**Former/Other Names**

**Address/Location/Map Reference** Lot 2, No. 2 Neville, St, Derby.

**Owners Name** Mrs M. Wells

**Contact details** 2 Neville St, Derby

**Occupied** Yes

**Public Access** No

## **DESCRIPTION OF THE PLACE AND ITS SETTING**

No. 2 Neville St was constructed in 1945 by Hugh Watt from recycled materials due to shortages caused by the war. The house is constructed on a concrete slab floor with corrugated iron external wall linings and fibro (asbestos) internal linings. The roof is steeply pitched with corrugated iron cladding. The building was used for a period as the office of the Department of Agriculture. In 1964 the building became the home of Mr and Mrs Wells who added a recycled WAPET hut as a spare room in 1966, constructed a carport circa 1970 and constructed a back verandah in 1987.

## **BUILDING DETAILS**

**Type** Residential

**Construction Date(s)** 1945

**Design Date**

**Sources for dates** Community information

**Original use** Residential/office

**Later / Current use(s)** Residential

**Construction materials** Concrete, corrugated iron, fibro

**Alterations** Addition of WAPET hut

**Intactness of fabric** Good

**Condition** Good

**Builder** Hugh Watt

## **SITE TYPE**

Residential building

## **STATEMENT OF SIGNIFICANCE**

Significant to the history of the development of Derby. Example of building in remote area during World War II.

## **SUPPORTING INFORMATION**

**Photographs**

**Bibliography**

Trish Ainslie and Roger Garwood; *Till She Dropped Her Strides: A Tribute to an Australian Lifestyle*; Plantagenet Press, Fremantle 1991.

**Local knowledge**

Beryl Ah Chee 091.911896

## **HISTORIC THEME AND SUB THEME**

Demographic settlement and mobility

## **PREVIOUS LISTINGS**

## **MANAGEMENT**

Retain and conserve if possible; endeavour to conserve the significance of the place through the provisions of the town planning scheme; photographically record the place prior to any major redevelopment or demolition.



**OTHER SITE DETAILS****C/T : Vol/Folio****Diagram/Plan****Reserve No.****Purpose****Leases****Lot/Location****Vesting****NOTES**

**MUNICIPAL INVENTORY PLACE RECORD FORM  
SHIRE OF DERBY / WEST KIMBERLEY**

**DERBY STONE QUARRY**

**L.G.A. Site No.**

**HCWA No.**

**ASSESSED BY**

**Name** Heritage and Conservation Professionals

**Contact details** PO Box 7576 Cloisters Square, Perth, 6850. Ph. (09) 4815021.

**Date** Nov. 1994.

**Review**

**Owner/Occupier consulted (Y/N)**

**Person**

**Date**

**PHOTOGRAPH**

**Date** Nov. 1994



**NAME ADDRESS & OWNERSHIP OF THE PLACE**

**Name of Place** Derby Stone quarry

**Former/Other Names**

**Address/Location/Map Reference** Reserve 37925, Lots 96, 97, 98, 99 Loch St, Derby.

**Owners Name** Vested in Shire Derby/West Kimberley

**Contact details**

**Occupied** No

**Public Access** Yes

## **DESCRIPTION OF THE PLACE AND ITS SETTING**

The Derby quarry was probably first excavated circa 1892 for the purpose of constructing the causeway across the mud flats from the town to the jetty for the construction of the tramline. Circa 1900 the tramway is known to have extended through the town to the quarry for the purpose of carrying stone for the construction of the causeway. The quarry is believed to have been excavated by hand using Aboriginal labour.

The quarry was used as a water hole by the local people during the wet season for many years. It was also used as a rubbish dump. In 1992 the Council commenced filling the site.

## **SITE TYPE**

Quarry

## **STATEMENT OF SIGNIFICANCE**

The quarry site is of historical significance to the history of the development of Derby as the stone was used to construct the causeway to the jetty. It is significant as part of the history of the Derby jetty tramway.

## **SUPPORTING INFORMATION**

**Photographs**

**Bibliography**

**Local knowledge**

Pam Masters, Derby Tourist Bureau

## **HISTORIC THEME AND SUB THEME**

Transport and Communications

Occupations

## **PREVIOUS LISTINGS**

## **MANAGEMENT**

Historic site without built features. Recognise - for example with a plaque, or name place.

## **OTHER SITE DETAILS**

**C/T : Vol/Folio**

**Lot/Location**

**Diagram/Plan**

**Reserve No.**

**Vesting**

**Purpose**

**Leases**

## **NOTES**

**MUNICIPAL INVENTORY PLACE RECORD FORM  
SHIRE OF DERBY / WEST KIMBERLEY**

**CATTLE RACE, STOCK ROUTE AND BOAB DINNER TREE**

**L.G.A. Site No.**

**HCWA No.**

**ASSESSED BY**

**Name** Heritage and Conservation Professionals

**Contact details** PO Box 7576 Cloisters Square, Perth, 6850. Ph. (09) 4815021.

**Date** Nov. 1994.

**Review**

**Owner/Occupier consulted (Y/N)**

**Person**

**Date**

**PHOTOGRAPH**

**Date** Nov. 1994



**Stock Yards by the Derby Jetty**

**NAME ADDRESS & OWNERSHIP OF THE PLACE**

**Name of Place** Cattle Race, Stock Route and Dinner Tree.

**Former/Other Names**

**Address/Location/Map Reference** Derby

**Owners Name**

**Contact details**

**Occupied** No

**Public Access** Yes

## **DESCRIPTION OF THE PLACE AND ITS SETTING**

There have been a succession of cattle races and stock routes connecting the pastoral hinterland with the Derby jetty. The first recording of the construction of a cattle race dates from 1894/5. The existing cattle yards constructed of steel and jarrah date from 1964, however the cattle race has been demolished. The cattle were driven into town along the cattle route which commenced at Mayall's Bore and the stockmen rested along the way under the Dinner Tree behind the pensioner houses in Rowan St.

## **SITE TYPE**

Stock Route and Yards

## **STATEMENT OF SIGNIFICANCE**

The stock route from Mayall's Bore including the Dinner Tree, site of the cattle race and the cattle yards are very significant to the history of Derby, the history of the Derby jetty and to the history of the cattle industry in the north of Australia.

## **SUPPORTING INFORMATION**

**Photographs**

**Bibliography**

**Local knowledge**

Elsia Archer, 091 911161

## **HISTORIC THEME AND SUB THEME**

Occupations

## **PREVIOUS LISTINGS**

## **MANAGEMENT**

High level of protection appropriate; provide maximum encouragement to the owner under the town planning scheme to conserve the significance of the place.

## **OTHER SITE DETAILS**

**C/T : Vol/Folio**

**Lot/Location**

**Diagram/Plan**

**Reserve No.**

**Vesting**

**Purpose**

**Leases**

## **NOTES**

**MUNICIPAL INVENTORY PLACE RECORD FORM  
SHIRE OF DERBY / WEST KIMBERLEY**

**WHARFINGER'S HOUSE**

**L.G.A. Site No.**

**HCWA No.** 40 0691

**ASSESSED BY**

**Name** Heritage and Conservation Professionals

**Contact details** PO Box 7576 Cloisters Square, Perth, 6850. Ph. (09) 4815021.

**Date** Nov. 1994.

**Review**

**Owner/Occupier consulted (Y/N)**

**Person**

**Date**

**PHOTOGRAPH**

**Date** Nov. 1994



**NAME ADDRESS & OWNERSHIP OF THE PLACE**

**Name of Place** Wharfinger's House

**Former/Other Names**

**Address/Location/Map Reference** Lot 268, Loch St, Derby.

**Owners Name**

**Contact details**

**Occupied** Museum purposes

**Public Access** Yes

## DESCRIPTION OF THE PLACE AND ITS SETTING

In 1920 a request was made for a house for the wharfinger responsible for overseeing the Derby wharf area. The house was not however completed until 1928. The house was occupied by a continuous sequence of wharfingers from 1928 to 1962 when a new house was constructed on Lot 502 Loch St. The original Wharfinger's House was occupied until 1976 by various tenants. The building was restored in 1988 as a bi-centennial project and has been used as a museum since 1990.

The building is rectangular in plan with a hipped roof and verandahs on all sides. The main house consists of three rooms opening onto the verandah through pairs of French doors. The building is timber frame on concrete stumps with vertical tongued and grooved wall lining internally and externally. The original building had a ventilated roof space with fly wire between the walls and ceilings. One end of the verandah has been enclosed and there is a fly-wire enclosed kitchen on the other end of the verandah.

## BUILDING DETAILS

**Type** Residential

**Construction Date(s)** 1928 **Design Date**

**Sources for dates** Plaque on building

**Original use** Residential **Later / Current use(s)** Museum

**Construction materials** Concrete stumps, timber frame, timber boarding, iron roof

**Alterations** Enclosure of verandah

**Intactness of fabric** Very good

**Condition** Very good

**Architect / designer / builder**

## SITE TYPE

Residential building

## STATEMENT OF SIGNIFICANCE

The Wharfingers House is significant to the social and historic development of Derby and to the history of the jetty area.

## SUPPORTING INFORMATION

**Photographs**

**Bibliography**

Displays at the Wharfinger's House

**Local knowledge**

## HISTORIC THEME AND SUB THEME

Occupations

Demographic settlement and mobility

**PREVIOUS LISTINGS**

Heritage Council Database

**MANAGEMENT**

Highest level of protection appropriate; recommended for entry into the State Register of Heritage Places; provide maximum encouragement to the owner to conserve the significance of the place.

**OTHER SITE DETAILS****C/T : Vol/Folio****Lot/Location****Diagram/Plan****Reserve No.****Vesting****Purpose****Leases****NOTES**



**MUNICIPAL INVENTORY PLACE RECORD FORM  
SHIRE OF DERBY / WEST KIMBERLEY**

**PRISON BOAB TREE**

**L.G.A. Site No.**

**HCWA No.** 40 0693

**ASSESSED BY**

**Name** Heritage and Conservation Professionals

**Contact details** PO Box 7576 Cloisters Square, Perth, 6850. Ph. (09) 4815021.

**Date** Nov. 1994.

**Review**

**Owner/Occupier consulted (Y/N)**

**Person**

**PHOTOGRAPH**

**Date** Nov. 1994



**NAME ADDRESS & OWNERSHIP OF THE PLACE**

**Name of Place** Prison Boab Tree

**Former/Other Names**

**Address/Location/Map Reference** Adjacent to Myall's Bore, Derby.

**Owners Name**

**Contact details**

**Occupied** No

**Public Access** Yes

## **DESCRIPTION OF THE PLACE AND ITS SETTING**

Large hollow boob tree believed to have been used as a holding post for prisoners who were being taken into Derby. Prisoners were often marched in chains over hundreds of miles, from their places of arrest for trial and imprisonment.

The prison tree is a well established tourist landmark.

## **SITE TYPE**

Prison Tree

## **STATEMENT OF SIGNIFICANCE**

The Prison tree is significant as much because it has become a symbol for the town of Derby as for the history associated with it. It represents the harsh treatment prisoners often received in the north of Australia in the late nineteenth and early twentieth century.

## **SUPPORTING INFORMATION**

**Photographs**

**Bibliography**

**Local knowledge**

## **HISTORIC THEME AND SUB THEME**

Demographic settlement and mobility

## **PREVIOUS LISTINGS**

Heritage Council Database

## **MANAGEMENT**

High level of protection appropriate; provide maximum encouragement to the owner under the town planning scheme to conserve the significance of the place.

Prepare a conservation plan for the tree to include a arboricultural report and recommendations for interpretation.

## **OTHER SITE DETAILS**

**C/T : Vol/Folio**

**Lot/Location**

**Diagram/Plan**

**Reserve No.**

**Vesting**

**Purpose**

**Leases**

## **NOTES**

**MUNICIPAL INVENTORY PLACE RECORD FORM  
SHIRE OF DERBY / WEST KIMBERLEY**

**MYALL'S BORE**

**L.G.A. Site No.**

**HCWA No.** 40 0695

**ASSESSED BY**

**Name** Heritage and Conservation Professionals

**Contact details** PO Box 7576 Cloisters Square, Perth, 6850. Ph. (09) 4815021.

**Date** Nov. 1994.

**Review**

**Owner/Occupier consulted (Y/N)**

**Person**

**Date**

**PHOTOGRAPH**

**Date** Nov. 1994



**NAME ADDRESS & OWNERSHIP OF THE PLACE**

**Name of Place** Myall's Bore

**Former/Other Names** Mayall's Bore

**Address/Location/Map Reference** Adjacent to the Prison Boab Tree, Derby.

**Owners Name**

**Contact details**

**Occupied** No

**Public Access** Yes

## **DESCRIPTION OF THE PLACE AND ITS SETTING**

Myall's Bore is a natural spring which was used traditionally to water cattle before driving them along the stock route into Derby. A long cattle trough was constructed circa 1910.

## **SITE TYPE**

Cattle Trough

## **STATEMENT OF SIGNIFICANCE**

Myall's Bore is significant as a physical remnant of the cattle droving history of Derby and the West Kimberley region.

## **SUPPORTING INFORMATION**

Photographs

Bibliography

Local knowledge

## **HISTORIC THEME AND SUB THEME**

Occupations

## **PREVIOUS LISTINGS**

Heritage Council Database

## **MANAGEMENT**

High level of protection appropriate; provide maximum encouragement to the owner under the town planning scheme to conserve the significance of the place.

## **OTHER SITE DETAILS**

C/T : Vol/Folio

Lot/Location

Diagram/Plan

Reserve No.

Vesting

Purpose

Leases

## **NOTES**

**MUNICIPAL INVENTORY PLACE RECORD FORM  
SHIRE OF DERBY / WEST KIMBERLEY**

**OLD POLICE GAOL DERBY**

**L.G.A. Site No.**

**HCWA No.** 40 0692

**ASSESSED BY**

**Name** Heritage and Conservation Professionals

**Contact details** PO Box 7576 Cloisters Square, Perth, 6850. Ph. (09) 4815021.

**Date** Nov. 1994.

**Review**

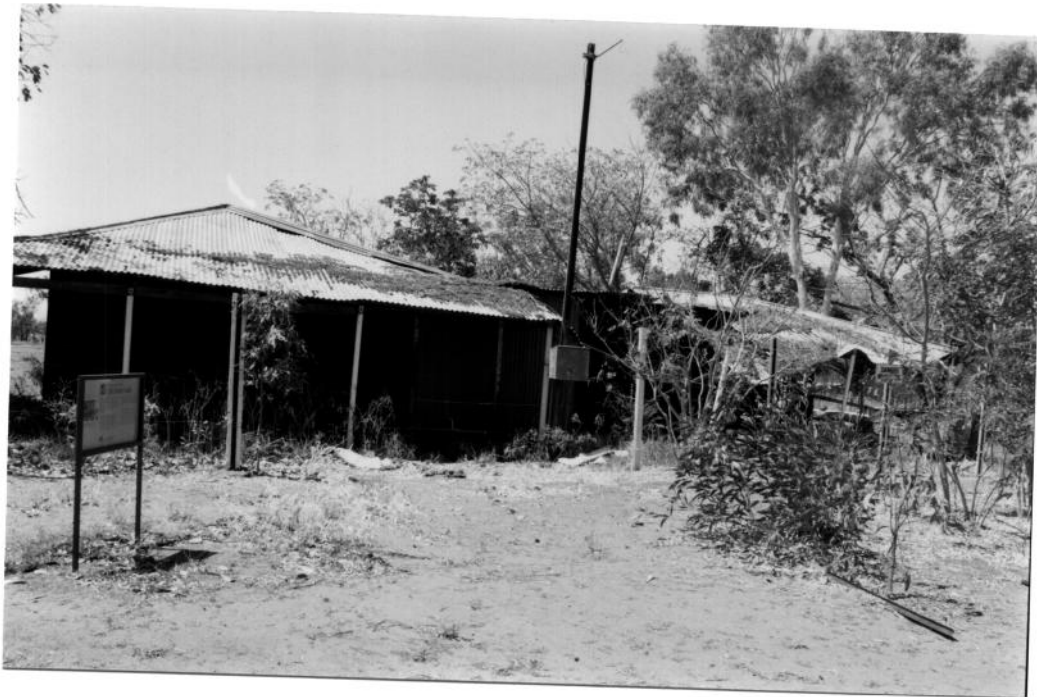
**Owner/Occupier consulted (Y/N)**

**Person**

**Date**

**PHOTOGRAPH**

**Date** Nov. 1994.



**NAME ADDRESS & OWNERSHIP OF THE PLACE**

**Name of Place** Old Police Gaol, Derby

**Former/Other Names**

**Address/Location/Map Reference** Police Reserve 3297, Loch and Villiers Sts, Derby.

**Owners Name** WA Government

**Contact details**

**Occupied** No

**Public Access** No

## DESCRIPTION OF THE PLACE AND ITS SETTING

The Old Derby Gaol is located adjacent to the current Derby Police Station and Lockup. Records indicate a police station constructed on or near this site in 1897. The first gaol in Derby was located near the site of the Old Residency (currently Numbala Nunga) and later relocated as the centre of town moved closer to the wharf area.

The gaol building consists of an iron frame constructed of railway track sections with iron mesh panel walls with a timber (jarrah or Karri) roof structure with corrugated iron roof sheets. The gaol consists of two open cells separated by a timber frame partition wall. Toilets were added later.

The building was probably used to house both Aboriginal and white prisoners. It is not known when the building ceased to be used.

## BUILDING DETAILS

Type Gaol

Construction Date(s) Unknown Design Date

Sources for dates

Original use Gaol

Later / Current use(s) Storing hay

Construction materials Concrete slab, iron frame and walls, timber roof framing and corrugated iron sheets.

Alterations Toilets added.

Intactness of fabric Good

Condition Very poor

Architect / designer / builder Probably PWD.WA.

## SITE TYPE

Government Building - Gaol

## STATEMENT OF SIGNIFICANCE

The Old Derby Gaol is very significant as a remnant of the system of law and order in Northern Australia circa the early 1900s. The building represents the harsh conditions in which Aboriginal and white prisoners were housed at this period.

## SUPPORTING INFORMATION

Photographs

### Bibliography

Cathie Clement *Municipal Inventory for the Shire of Derby/West Kimberley; Thematic Framework*; 1995.

Cathie Clement and Rosemary Rosario; *Conservation Plan for the Old Derby Gaol*. (under preparation for the Building Management Authority 1995)

Local knowledge

**HISTORIC THEME AND SUB THEME**

Social and Civic activities

**PREVIOUS LISTINGS**

Heritage Council Database

**MANAGEMENT**

Highest level of protection appropriate; recommended for entry into the State Register of Heritage Places; provide maximum encouragement to the owner to conserve the significance of the place.

**OTHER SITE DETAILS**

**C/T : Vol/Folio**

**Lot/Location**

**Diagram/Plan**

**Reserve No.** 3297

**Vesting** Police Department

**Purpose** Police

**Leases**

**NOTES**

**MUNICIPAL INVENTORY PLACE RECORD FORM  
SHIRE OF DERBY / WEST KIMBERLEY**

**FROSTY POOL**

**L.G.A. Site No.**

**HCWA No.**

**ASSESSED BY**

**Name** Heritage and Conservation Professionals

**Contact details** PO Box 7576 Cloisters Square, Perth, 6850. Ph. (09) 4815021.

**Date** Nov. 1994.

**Review**

**Owner/Occupier consulted (Y/N)**

**Person**

**Date**

**PHOTOGRAPH**

**Date** Nov 1994.



**NAME ADDRESS & OWNERSHIP OF THE PLACE**

**Name of Place** Frosty Pool

**Former/Other Names**

**Address/Location/Map Reference** near Myall's Bore, Derby.

**Owners Name**

**Contact details**

**Occupied** No

**Public Access** Yes



## **DESCRIPTION OF THE PLACE AND ITS SETTING**

Frosty Pool located near Myall's Bore on the outskirts of Derby was constructed in July 1944 by personnel from the No.3 Platoon of the 125 Platoon General Transport Company for the purpose of cooling off.

## **SITE TYPE**

Pool

## **STATEMENT OF SIGNIFICANCE**

Frosty Pool is of significance to the social history of the armed forces in the north of Western Australia during World War II.

## **SUPPORTING INFORMATION**

### **Photographs**

### **Bibliography**

Cathie Clement *Municipal Inventory for the Shire of Derby/West Kimberley; Thematic Framework*; 1995.

### **Local knowledge**

## **HISTORIC THEME AND SUB THEME**

Social and civic activities.

## **PREVIOUS LISTINGS**

## **MANAGEMENT**

Significant but not essential to an understanding of the history of the district;  
Photographically record the place prior to any redevelopment or demolition.

## **OTHER SITE DETAILS**

**C/T : Vol/Folio**

**Lot/Location**

**Diagram/Plan**

**Reserve No.**

**Vesting**

**Purpose**

**Leases**

## **NOTES**

**MUNICIPAL INVENTORY PLACE RECORD FORM  
SHIRE OF DERBY / WEST KIMBERLEY**

**DERBY HOSPITAL**

**L.G.A. Site No.**

**HCWA No.**

**ASSESSED BY**

**Name** Heritage and Conservation Professionals

**Contact details** PO Box 7576 Cloisters Square, Perth, 6850. Ph. (09) 4815021.

**Date** Nov. 1994.

**Review**

**Owner/Occupier consulted (Y/N)**

**Person**

**Date**

**PHOTOGRAPH**

**Date** Nov. 1994.



**Derby Hospital**

**NAME ADDRESS & OWNERSHIP OF THE PLACE**

**Name of Place** Derby Hospital

**Former/Other Names**

**Address/Location/Map Reference** Hospital Reserve 6669, Located between Clarendon, Hensman, Loch and Neville Streets, Derby.

**Owners Name**

**Contact details**

**Occupied** Yes

**Public Access** Restricted

## **DESCRIPTION OF THE PLACE AND ITS SETTING**

The first hospital in Derby was located in the grounds of the former Residency building (now the site of Numbala Nunga). In 1924 a hospital for white patients was opened on the current hospital site. This site already contained the house of the resident medical officer, later named Holman House, which has since been relocated to a site on the outskirts of Derby. In 1924 the old Residency building remained in use as an isolation hospital for Aboriginal people, many suffering from leprosy.

The original hospital buildings have been demolished. The earliest remaining buildings on the hospital site date from 1962. (Mrs Wells and local history collection)

## **SITE TYPE**

Hospital

## **STATEMENT OF SIGNIFICANCE**

The Derby Hospital site is significant to the history of the development of Derby and to the history of the provision of health services to the north of Western Australia.

## **SUPPORTING INFORMATION**

### **Photographs**

### **Bibliography**

Cathie Clement *Municipal Inventory for the Shire of Derby/West Kimberley; Thematic Framework*; 1995.

Derby/West Kimberley Shire Library; local history collection - Hospital file.

### **Local knowledge**

Mrs Margaret Wells

## **HISTORIC THEME AND SUB THEME**

Social and civic activities

## **PREVIOUS LISTINGS**

## **MANAGEMENT**

Historic site which has been developed over a number of years. Buildings believed to date from the 1960s should be assessed in more detail when considering a development application. The site should continue to be used for health services. There should be interpretive material indicating the history of use of the site incorporated into any future development of the site.

**OTHER SITE DETAILS****C/T : Vol/Folio****Diagram/Plan****Reserve No.** 6669**Purpose** Hospital**Leases****Lot/Location****Vesting****NOTES**

**Derby Hospital Wards circa 1962**

**MUNICIPAL INVENTORY PLACE RECORD FORM  
SHIRE OF DERBY / WEST KIMBERLEY**

**HOLMAN HOUSE**

**L.G.A. Site No.**

**HCWA No.**

**ASSESSED BY**

**Name** Heritage and Conservation Professionals

**Contact details** PO Box 7576 Cloisters Square, Perth, 6850. Ph. (09) 4815021.

**Date** Nov. 1994.

**Review**

**Owner/Occupier consulted (Y/N)**

**Person**

**Date**

**PHOTOGRAPH**

**Date**



**NAME ADDRESS & OWNERSHIP OF THE PLACE**

**Name of Place** Holman House

**Former/Other Names** Doctor's Residence

**Address/Location/Map Reference** Located at the Gibb River Road turnoff.

**Owners Name** Shire of Derby/West Kimberley

**Contact details**

**Occupied** Yes

**Public Access** No

## DESCRIPTION OF THE PLACE AND ITS SETTING

Holman House was constructed circa 1915 to house the resident medical officer in Derby. The house was originally located on the current hospital reserve (Onslow Square) opposite to the former Courthouse building. The building was relocated for the construction of part of the existing hospital complex.

Holman House took its name from Derby's long serving medical Officer Dr Holman who lived in the house in the 1950s and was known for his dedication to the medical needs of the people of Derby including the patients of the Derby Leprosarium.

The building is rectangular in plan and constructed of timber frame with corrugated iron roof. It is a good example of a typical house constructed in the region in the early 1900s. The house was constructed by Owen Ah Chee.

## BUILDING DETAILS

**Type** Residential

**Construction Date(s)** Circa 1915      **Design Date**

**Sources for dates** Correspondence in Hospital File, Local History Collection, Derby Library

**Original use** Doctor's Residence      **Later / Current use(s)** Residential

**Construction materials** Timber frame, fibro (asbestos) and iron.

**Alterations** Numerous

**Intactness of fabric** Requires further investigation

**Condition** Requires further investigation

**Builder** Owen Ah Chee

## SITE TYPE

Public Building - hospital house

## STATEMENT OF SIGNIFICANCE

Holman House is significant for its associations with the history of the Derby Hospital and with various medical officers including Dr Holman.

## SUPPORTING INFORMATION

### Photographs

### Bibliography

Cathie Clement *Municipal Inventory for the Shire of Derby/West Kimberley; Thematic Framework*; 1995.

Derby/West Kimberley Shire Library; local history collection - Hospital file.

### Local knowledge

## HISTORIC THEME AND SUB THEME

Social and civic activities; Occupations

**PREVIOUS LISTINGS****MANAGEMENT**

High level of protection appropriate; provide maximum encouragement to the owner under the town planning scheme to conserve the significance of the place.

Consider use of the building for interpretive purposes in association with the history of the Derby Hospital. Erect a sign indicating the significance of the house.

**OTHER SITE DETAILS**

**C/T : Vol/Folio**

**Lot/Location**

**Diagram/Plan**

**Reserve No.**

**Vesting**

**Purpose**

**Leases**

**NOTES**

**MUNICIPAL INVENTORY PLACE RECORD FORM  
SHIRE OF DERBY / WEST KIMBERLEY**

**DERBY MASONIC LODGE  
(FORMER SCHOOL)**

**L.G.A. Site No.**

**HCWA No.**

**ASSESSED BY**

**Name** Heritage and Conservation Professionals

**Contact details** PO Box 7576 Cloisters Square, Perth, 6850. Ph. (09) 4815021.

**Date** Nov. 1994.

**Review**

**Owner/Occupier consulted (Y/N)** Yes

**Person** Derby Masonic Lodge

**Date** 25.11.1994

**PHOTOGRAPH**

**Date** Nov. 1994.



**NAME ADDRESS & OWNERSHIP OF THE PLACE**

**Name of Place** Derby Masonic Lodge

**Former/Other Names** Derby School

**Address/Location/Map Reference** Reserve 1022, Hardman St, Derby.

**Owners Name** Shire of Derby/West Kimberley

**Contact details** PO Box 94, Derby 6728

**Occupied** Yes (Derby Masonic Lodge)

**Public Access** Restricted



## DESCRIPTION OF THE PLACE AND ITS SETTING

The building now occupied by the Derby Masonic Lodge was constructed in 1907 and was the first school in Derby. (Thematic Framework) The building suffered severe cyclone damage in the early 1950s. It was used as a technical school in the 1960s prior to its closure. The Masonic Lodge has used the building from circa the 1970s and was involved in its restoration in 1987/8.

The building has undergone numerous alterations during the period of its history and further research is required to establish its original details. The timber framed building on concrete stumps is currently fibro (asbestos) lined with a Colorbond roof. The previous asbestos roof probably replaced an earlier corrugated iron roof. Louvred verandah walls are similar to original detail.

The master's residence, constructed circa 1909, was originally adjacent to the school, however this building no longer exists. (Photograph; Battye Library Collection)

## BUILDING DETAILS

**Type** School

**Construction Date(s)** 1907 **Design Date**

**Sources for dates** PWD documents

**Original use** School **Later / Current use(s)** Masonic Lodge

**Construction materials** Timber frame, fibro, Colorbond

**Alterations** Various

**Intactness of fabric** Requires further investigation

**Condition** Good

**Architect / designer / builder** Probably PWD WA

## SITE TYPE

Public Building - School

## STATEMENT OF SIGNIFICANCE

Significant to the development of the town of Derby and to the history of education in the north of Western Australia. Significant example of a building dating from the early 1900s in Derby.

## SUPPORTING INFORMATION

### Photographs

Battye Library Photographic Collection

### Bibliography

Cathie Clement *Municipal Inventory for the Shire of Derby/West Kimberley; Thematic Framework*; 1995.

Derby/West Kimberley Shire Library; local history collection - School file.

BMA Plan Room - Drawings of the building

### Local knowledge

Morris Stevens; Shire of Derby/West Kimberley

**HISTORIC THEME AND SUB THEME**

Social and civic activities; Occupations

**PREVIOUS LISTINGS****MANAGEMENT**

High level of protection appropriate; provide maximum encouragement to the owner under the town planning scheme to conserve the significance of the place.

**OTHER SITE DETAILS**

**C/T : Vol/Folio**

**Lot/Location**

**Diagram/Plan**

**Reserve No. 10227**

**Vesting**

**Purpose**

**Leases**

**NOTES**

**MUNICIPAL INVENTORY PLACE RECORD FORM  
SHIRE OF DERBY / WEST KIMBERLEY**

**BUNGARUN**

**L.G.A. Site No.**

**HCWA No.**

**ASSESSED BY**

**Name** Heritage and Conservation Professionals

**Contact details** PO Box 7576 Cloisters Square, Perth, 6850. Ph. (09) 4815021.

**Date** Nov. 1994.

**Review**

**Owner/Occupier consulted (Y/N)**

**Person**

**Date**

**PHOTOGRAPH**

**Date** Nov. 1994.



**NAME ADDRESS & OWNERSHIP OF THE PLACE**

**Name of Place** Bungarun

**Former/Other Names** Derby Leprosarium

**Address/Location/Map Reference** Derby SE 51.7 WA7989

**Owners Name**

**Contact details**

**Occupied** Yes

**Public Access** No

## **DESCRIPTION OF THE PLACE AND ITS SETTING**

In the 1920s and 30s controversy surrounded the issue of health care in Derby due to the treatment of people, mostly Aboriginal, suffering from Hansen's disease (leprosy). In 1924 a new white hospital was constructed in Derby and Aboriginal patients mostly suffering from Leprosy continued to be treated in the old hospital which incorporated the former Residency building. In 1925 Derby patients were transferred to a new lazaret at Cossack and the old Residency was burnt to prevent the spread of disease. In the 1930s the treatment of leprosy was transferred to Darwin, however fresh cases appeared in Derby. As a result the State Medical Department used a Federal Subsidy to construct the Leprosarium at Bungarun near Derby in 1936. The leprosarium eventually closed in 1986.

The leprosarium site contains a number of buildings which have been constructed over the period of its history. These include quarters of the former medical staff, dormitories, service buildings, patients shelters, and the Church of England chapel constructed circa 1956. Some of these buildings have been restored by the current owners of the site.

## **SITE TYPE**

Site containing group of medical buildings

## **STATEMENT OF SIGNIFICANCE**

Bungarun, the site of the previous Derby Leprosarium is of significance to the history of the medical services in Western Australia. It is of great significance to the former patients and nursing staff of the hospital.

## **SUPPORTING INFORMATION**

### **Photographs**

### **Bibliography**

Cathie Clement *Municipal Inventory for the Shire of Derby/West Kimberley; Thematic Framework*; 1995.

Derby/West Kimberley Shire Library; local history collection - Leprosarium file.

BMA Plan Room and WA Archives - Drawings of the building

### **Local knowledge**

## **HISTORIC THEME AND SUB THEME**

Social and civic activities

## **PREVIOUS LISTINGS**

**MANAGEMENT**

Highest level of protection appropriate; recommended for entry into the State Register of Heritage Places; provide maximum encouragement to the owner to conserve the significance of the place.

Prepare as conservation plan for the place taking into account issues of Aboriginal significance.

**OTHER SITE DETAILS**

**C/T : Vol/Folio**

**Lot/Location**

**Diagram/Plan**

**Reserve No.**

**Vesting**

**Purpose**

**Leases**

**NOTES**



**MUNICIPAL INVENTORY PLACE RECORD FORM  
SHIRE OF DERBY / WEST KIMBERLEY**

**NUMBALA NUNGA**

**L.G.A. Site No.**

**HCWA No.**

**ASSESSED BY**

**Name** Heritage and Conservation Professionals

**Contact details** PO Box 7576 Cloisters Square, Perth, 6850. Ph. (09) 4815021.

**Date** Nov. 1994.

**Review**

**Owner/Occupier consulted (Y/N)**

**Person**

**Date**

**PHOTOGRAPH**

**Date** Nov. 1994



**NAME ADDRESS & OWNERSHIP OF THE PLACE**

**Name of Place** Numbala Nunga

**Former/Other Names** Government Residency; Derby Native Hospital.

**Address/Location/Map Reference** Reserve 28992, Loch St, Derby.

**Owners Name**

**Contact details**

**Occupied** Yes

**Public Access** Restricted

## **DESCRIPTION OF THE PLACE AND ITS SETTING**

Numbala Nunga Nursing Home is constructed on the site of the original Government Residency in Derby. The first Government Resident in Derby in 1883 was Robert Fairbairn. Until the early 1900s police buildings including the towns first lockup were located in this vicinity. The Government residency was a substantial timber and iron structure with shutters, however the police facilities were little more than corrugated iron huts.

The Residency grounds appear to have housed the town's first hospital and this group of buildings became the Aboriginal hospital in 1924. In 1925 the former Residency building was burnt as a disease control measure when the leprosy patients were relocated to Cossack. The Native Hospital was closed in 1965 and replaced by Numbala Nunga Nursing Home.

## **SITE TYPE**

Site of former Government Buildings

## **STATEMENT OF SIGNIFICANCE**

The site is of great significance to the history of the development of Derby as the site of the government Residency, police facilities, first hospital and Aboriginal hospital over the period of the town's history.

## **SUPPORTING INFORMATION**

### **Photographs**

### **Bibliography**

Cathie Clement *Municipal Inventory for the Shire of Derby/West Kimberley; Thematic Framework*; 1995.

Derby/West Kimberley Shire Library; local history collection - Hospital File.

BMA Plan Room and WA Archives

### **Local knowledge**

## **HISTORIC THEME AND SUB THEME**

Social and civic activities

## **PREVIOUS LISTINGS**

## **MANAGEMENT**

Historic site without built features. Recognise - for example with a plaque, place name or reflection in urban or architectural design.

## **OTHER SITE DETAILS**

**C/T : Vol/Folio**

**Lot/Location**

**Diagram/Plan**

**Reserve No.** 28992

**Vesting**

**Purpose**

**Leases**

**NOTES**



**MUNICIPAL INVENTORY PLACE RECORD FORM  
SHIRE OF DERBY / WEST KIMBERLEY**

**TOM STREET MISSION HOUSE**

**L.G.A. Site No.**

**HCWA No.**

**ASSESSED BY**

**Name** Heritage and Conservation Professionals

**Contact details** PO Box 7576 Cloisters Square, Perth, 6850. Ph. (09) 4815021.

**Date** Nov. 1994.

**Review**

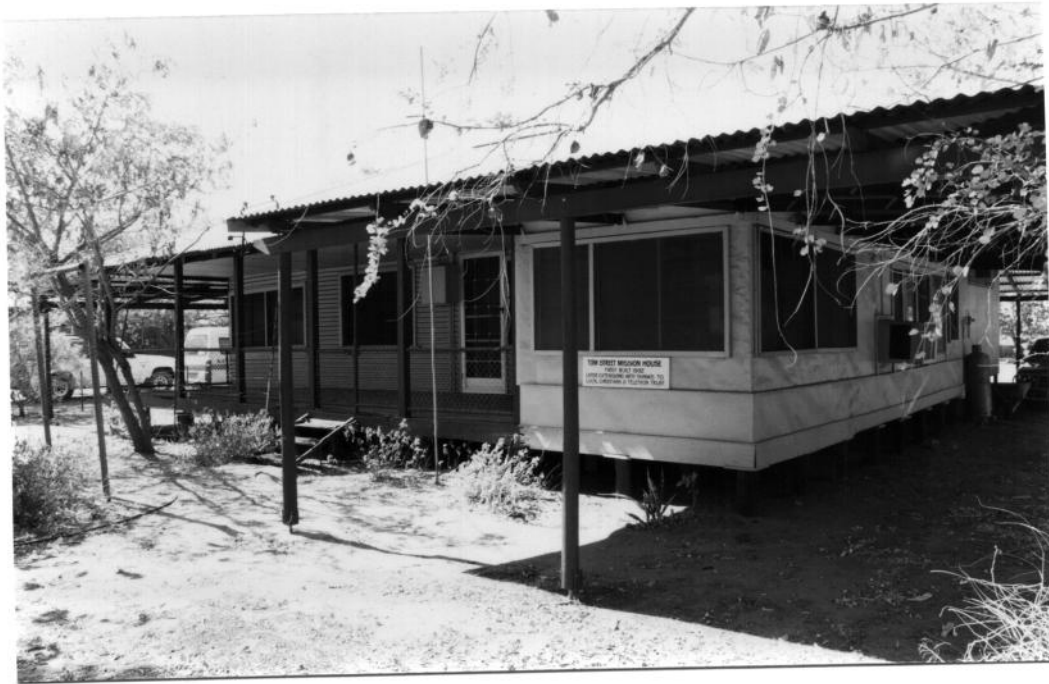
**Owner/Occupier consulted (Y/N)** Yes

**Person** Pastor Phil Brewster

**Date**

**PHOTOGRAPH**

**Date** Nov. 1994



**NAME ADDRESS & OWNERSHIP OF THE PLACE**

**Name of Place** Tom Street Mission House

**Former/Other Names** UAM House

**Address/Location/Map Reference** Lots 248 - 249; 45 Loch Street, Derby.

**Owners Name** The Derby Aboriginal Christian Fellowship Inc. (Derby Community Church)

**Contact details** PO Box 802 Derby.

**Occupied** Yes

**Public Access** Restricted

## **DESCRIPTION OF THE PLACE AND ITS SETTING**

The Tom Street Mission House was built circa 1932/33 by church missionaries of the United Aborigines Mission and named after the first UAM missionary in the area. The house has been used continuously from the 1930s to the present for housing church missionaries and pastors.

The house was built of materials available locally. The house frame and stumps are of Cyprus pine and the external walls and roof are corrugated iron. The timber floorboards are believed to have come from ship wrecks off the coast. Roof battens are mangrove jacks. The original section of the house remains intact with original Malthoid (bituminous paper) internal lining. The house has been extended and a verandah was added in the 1980s.

The site also contains a corrugated iron Aboriginal Welfare department hut which was used by the mission women as a work room. There is also a larger outbuilding constructed of similar materials to the house. The old UAM hostel that existed adjacent to the house has been demolished and replaced by a church.

The Derby mission is related to the mission at Mount Barnett Station.

## **BUILDING DETAILS**

**Type** Residential

**Construction Date(s)** 1932/33 **Design Date**

**Sources for dates** Plaque on the building

**Original use** Mission house **Later / Current use(s)** Mission house

**Construction materials** Timber frame and corrugated iron

**Alterations** Verandah

**Intactness of fabric** Good

**Condition** Good

**Architect / designer / builder**

## **SITE TYPE**

Group of residential buildings (mission)

## **STATEMENT OF SIGNIFICANCE**

The Tom Street Mission House is significant to the development of Derby. It is also a significant part of the history of the church and the UAM in particular in the north of Western Australia.

**SUPPORTING INFORMATION****Photographs****Bibliography****Local knowledge**

Pastor Phil Brewster

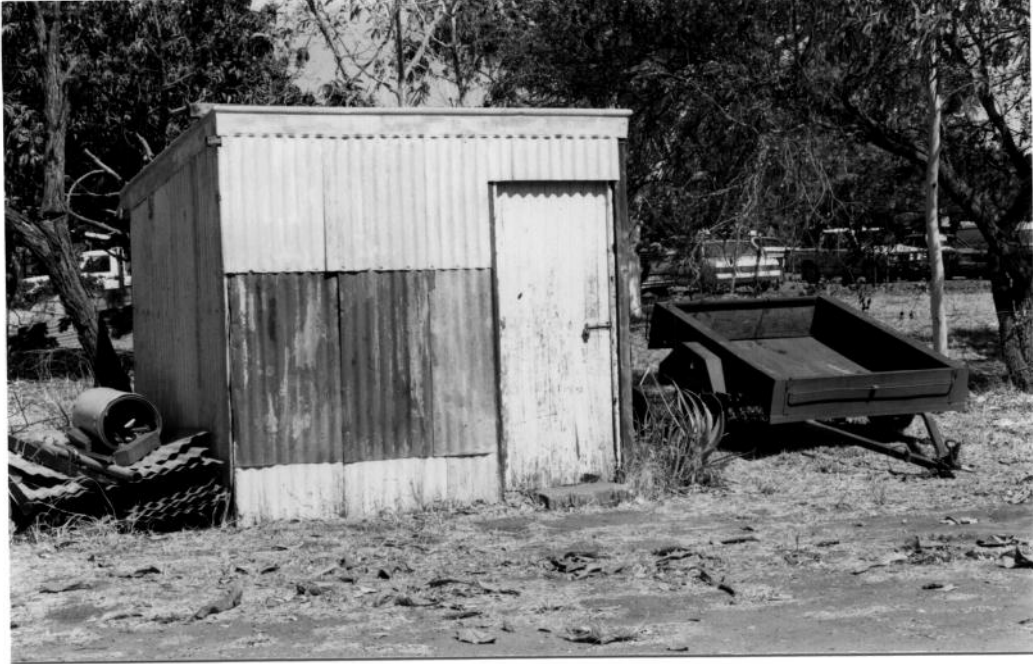
**HISTORIC THEME AND SUB THEME**

Demographic settlement and mobility

**PREVIOUS LISTINGS****MANAGEMENT**

High level of protection appropriate; provide maximum encouragement to the owner under the town planning scheme to conserve the significance of the place.

**OTHER SITE DETAILS****C/T : Vol/Folio****Lot/Location****Diagram/Plan****Reserve No.****Vesting****Purpose****Leases****NOTES**



**Aboriginal Welfare Hut**

**MUNICIPAL INVENTORY PLACE RECORD FORM  
SHIRE OF DERBY / WEST KIMBERLEY**

**OLD MOWANJUM MISSION SITE**

**L.G.A. Site No.**

**HCWA No.**

**ASSESSED BY**

**Name** Heritage and Conservation Professionals

**Contact details** PO Box 7576 Cloisters Square, Perth, 6850. Ph. (09) 4815021.

**Date** Nov. 1994.

**Review**

**Owner/Occupier consulted (Y/N)**

**Person**

**Date**

**PHOTOGRAPH**

**Date** Site not photographed

**NAME ADDRESS & OWNERSHIP OF THE PLACE**

**Name of Place** Site of Old Mowanjun Mission

**Former/Other Names**

**Address/Location/Map Reference** Nr Derby

**Owners Name**

**Contact details**

**Occupied** No

**Public Access** No

**DESCRIPTION OF THE PLACE AND ITS SETTING**

Mowanjum Mission was established on what had been a 125,000 acre cattle station on the outskirts of Derby in 1956. The people who settled there were from the Ngarinyin, Wunambul and Worora peoples, relocated from the previous mission at Wotjulum near Cockatoo Island. A church was constructed in 1959 at Mowanjum by volunteers from Geraldton. Men who played a significant role in the establishment of the community and integration with Derby townspeople were Albert Barunga, David Mowaljarlai, Alan Mungulu and Watty Ngerdu.

The Mowanjum community has subsequently been relocated.

**SITE TYPE**

Site of previous community

**STATEMENT OF SIGNIFICANCE**

The site of the old Mowanjum Mission is of significance to the history of the development of Derby and to the history of the Aboriginal people in the area.

**SUPPORTING INFORMATION****Photographs****Bibliography**

Cathie Clement *Municipal Inventory for the Shire of Derby/West Kimberley; Thematic Framework*; 1995.

**Local knowledge****HISTORIC THEME AND SUB THEME**

Demographic settlement and mobility

**PREVIOUS LISTINGS****MANAGEMENT**

Significant site. Recognise with a plaque or place name. Further research into the significance of the place for Aboriginal people is appropriate.

**OTHER SITE DETAILS**

**C/T : Vol/Folio**

**Lot/Location**

**Diagram/Plan**

**Reserve No.**

**Vesting**

**Purpose**

**Leases****NOTES**

**MUNICIPAL INVENTORY PLACE RECORD FORM  
SHIRE OF DERBY / WEST KIMBERLEY**

**HOUSE, LOT 266, NO. 5 LOCH ST.**

**L.G.A. Site No.**

**HCWA No.**

**ASSESSED BY**

**Name** Heritage and Conservation Professionals

**Contact details** PO Box 7576 Cloisters Square, Perth, 6850. Ph. (09) 4815021.

**Date** Nov. 1994.

**Review**

**Owner/Occupier consulted (Y/N)**

**Person**

**Date**

**PHOTOGRAPH**

**Date** Nov.. 1994



**NAME ADDRESS & OWNERSHIP OF THE PLACE**

**Name of Place** House, Lot 266; 5 Loch St, Derby.

**Former/Other Names**

**Address/Location/Map Reference** Lot 266; 5 Loch St, Derby.

**Owners Name**

**Contact details**

**Occupied** Yes

**Public Access** No

**DESCRIPTION OF THE PLACE AND ITS SETTING**

House believed to have been relocated from Broome in the 1930s. Timber framed building with fibro and louvres to verandah. Concrete stumps and corrugated iron roof.

**BUILDING DETAILS**

**Type** Residential

**Construction Date(s)** Relocated 1930s **Design Date**

**Sources for dates** Community information

**Original use** Residential **Later / Current use(s)** Residential

**Construction materials** Timber, iron. fibro and concrete

**Alterations** Not known

**Intactness of fabric** Not known

**Condition** Fair

**Architect / designer / builder** Not known

**SITE TYPE**

Residential Building

**STATEMENT OF SIGNIFICANCE**

Significant to the history and development of Derby

**SUPPORTING INFORMATION**

**Photographs**

**Bibliography**

**Local knowledge**

**HISTORIC THEME AND SUB THEME**

Demographic settlement and mobility.

**PREVIOUS LISTINGS****MANAGEMENT**

High level of protection appropriate. Assess in more detail when considering a development application.

**OTHER SITE DETAILS**

**C/T : Vol/Folio**

**Lot/Location**

**Diagram/Plan**

**Reserve No.**

**Vesting**

**Purpose**

**Leases**

**NOTES**



**MUNICIPAL INVENTORY PLACE RECORD FORM  
SHIRE OF DERBY / WEST KIMBERLEY**

**SHED, LOT 260 LOCH ST**

**L.G.A. Site No.**

**HCWA No.**

**ASSESSED BY**

**Name** Heritage and Conservation Professionals

**Contact details** PO Box 7576 Cloisters Square, Perth, 6850. Ph. (09) 4815021.

**Date** Nov. 1994.

**Review**

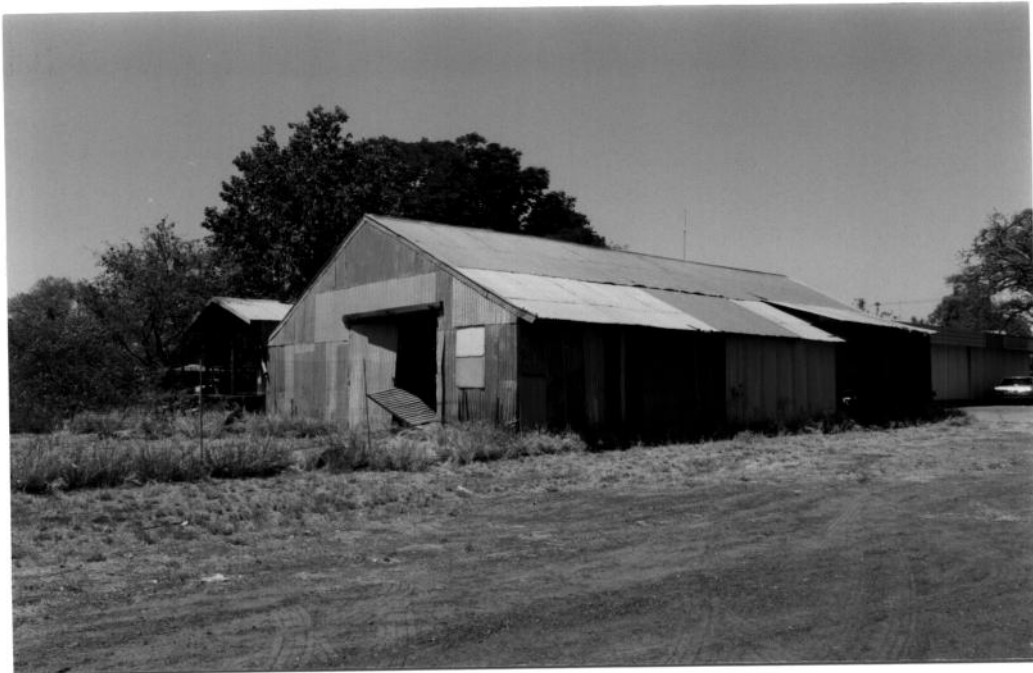
**Owner/Occupier consulted (Y/N)**

**Person**

**Date**

**PHOTOGRAPH**

**Date** Nov. 1994



**NAME ADDRESS & OWNERSHIP OF THE PLACE**

**Name of Place** Shed

**Former/Other Names**

**Address/Location/Map Reference** Lot 260 Loch St, Cnr Loch and Johnson Streets

**Owners Name**

**Contact details**

**Occupied**

**Public Access**

**DESCRIPTION OF THE PLACE AND ITS SETTING**

Corrugated iron shed located at the intersection of Loch and Johnson Streets which may have been used in association with the jetty tramway.

**BUILDING DETAILS**

**Type** Shed

**Construction Date(s)** Not known **Design Date**

**Sources for dates**

**Original use** Not known **Later / Current use(s)**

**Construction materials** Corrugated iron

**Alterations** Not known

**Intactness of fabric**

**Condition** Fair

**Architect / designer / builder**

**SITE TYPE**

Industrial building

**STATEMENT OF SIGNIFICANCE**

Significant to the history of the development of Derby

**SUPPORTING INFORMATION**

**Photographs**

**Bibliography**

**Local knowledge**

**HISTORIC THEME AND SUB THEME**

Occupations

**PREVIOUS LISTINGS****MANAGEMENT**

Assess in more detail when considering a development application.

**OTHER SITE DETAILS**

**C/T : Vol/Folio**

**Lot/Location**

**Diagram/Plan**

**Reserve No.**

**Vesting**

**Purpose**

**Leases**

**NOTES**

**MUNICIPAL INVENTORY PLACE RECORD FORM  
SHIRE OF DERBY / WEST KIMBERLEY**

**OLD CORDIAL FACTORY**

**L.G.A. Site No.**

**HCWA No.**

**ASSESSED BY**

**Name** Heritage and Conservation Professionals

**Contact details** PO Box 7576 Cloisters Square, Perth, 6850. Ph. (09) 4815021.

**Date** Nov. 1994.

**Review**

**Owner/Occupier consulted (Y/N)**

**Person**

**Date**

**PHOTOGRAPH**

**Date** Nov. 1994



**NAME ADDRESS & OWNERSHIP OF THE PLACE**

**Name of Place** Old Cordial Factory

**Former/Other Names**

**Address/Location/Map Reference** Lots 33 and 34 Loch St, Derby.

**Owners Name**

**Contact details**

**Occupied** No

**Public Access** No

**DESCRIPTION OF THE PLACE AND ITS SETTING**

Corrugated iron shed believed to have been used as a cordial factory.

**BUILDING DETAILS**

**Type** Factory

**Construction Date(s)** Not known      **Design Date**

**Sources for dates**

**Original use**      **Later / Current use(s)**

**Construction materials** Corrugated iron

**Alterations**

**Intactness of fabric**

**Condition** Fair

**Architect / designer / builder**

**SITE TYPE**

Industrial building

**STATEMENT OF SIGNIFICANCE**

Significant to the history of the development of Derby

**SUPPORTING INFORMATION**

**Photographs**

**Bibliography**

**Local knowledge**

**HISTORIC THEME AND SUB THEME**

Occupations

**PREVIOUS LISTINGS****MANAGEMENT**

Assess in more detail when considering a development application.

**OTHER SITE DETAILS**

**C/T : Vol/Folio**

**Lot/Location**

**Diagram/Plan**

**Reserve No.**

**Vesting**

**Purpose**

**Leases**

**NOTES**

**MUNICIPAL INVENTORY PLACE RECORD FORM  
SHIRE OF DERBY / WEST KIMBERLEY**

**LE LIEVRE'S STORE**

**L.G.A. Site No.**

**HCWA No.**

**ASSESSED BY**

**Name** Heritage and Conservation Professionals

**Contact details** PO Box 7576 Cloisters Square, Perth, 6850. Ph. (09) 4815021.

**Date** Nov. 1994.

**Review**

**Owner/Occupier consulted (Y/N)**

**Person**

**Date**

**PHOTOGRAPH**

**Date** Nov. 1994.



**NAME ADDRESS & OWNERSHIP OF THE PLACE**

**Name of Place** Le Lievre's Store

**Former/Other Names** Jimmy Ah Chee's Garage

**Address/Location/Map Reference** Loch St.

**Owners Name**

**Contact details**

**Occupied**

**Public Access**

**DESCRIPTION OF THE PLACE AND ITS SETTING**

The existing store is constructed in front of a much older building which is believed to have been Jimmy Ah Chee's Garage in the 1930s.

**BUILDING DETAILS**

Type

Construction Date(s)

Design Date

Sources for dates

Original use

Later / Current use(s)

Construction materials

Alterations

Intactness of fabric

Condition

Architect / designer / builder

**SITE TYPE**

Commercial Premises

**STATEMENT OF SIGNIFICANCE**

Significant to the history of the development of Derby.

**SUPPORTING INFORMATION**

Photographs

Bibliography

Local knowledge

**HISTORIC THEME AND SUB THEME**

Occupations

**PREVIOUS LISTINGS****MANAGEMENT**

Assess in more detail when considering a development application.

Conserve the original structure behind the existing store.

**OTHER SITE DETAILS**

C/T : Vol/Folio

Lot/Location

Diagram/Plan

Reserve No.

Vesting

Purpose

Leases

**NOTES**

**MUNICIPAL INVENTORY PLACE RECORD FORM  
SHIRE OF DERBY / WEST KIMBERLEY**

**DERBY HOSTEL**

**L.G.A. Site No.**

**HCWA No.**

**ASSESSED BY**

**Name** Heritage and Conservation Professionals

**Contact details** PO Box 7576 Cloisters Square, Perth, 6850. Ph. (09) 4815021.

**Date** Nov. 1994.

**Review**

**Owner/Occupier consulted (Y/N)**

**Person**

**Date**

**PHOTOGRAPH**

**Date** Nov. 1994



**NAME ADDRESS & OWNERSHIP OF THE PLACE**

**Name of Place** Derby Hostel

**Former/Other Names** MMA Staff Quarters

**Address/Location/Map Reference** Lots 234 and 235 Villiers St, Derby.

**Owners Name**

**Contact details**

**Occupied** Yes

**Public Access** No

## **DESCRIPTION OF THE PLACE AND ITS SETTING**

The Derby Hostel was constructed to provide accommodation for staff of the former MacRobertson Miller Airline Company. The hostel was located behind the original airlines office which has subsequently been demolished.

The first air service in Western Australia was established between Derby and Geraldton in 1921 by war veteran Norman Brearley's Western Australian Airways (commonly called 'Airways'). This service was extended to Perth in 1923. In 1934 fresh tenders were called for the service which was to incorporate a link with a proposed airmail service to the UK. The MacRobertson Miller Aviation Company (MMA) took control of the service at that time.

The existing hostel comprises two residential blocks constructed of fibro (asbestos) walls and corrugated iron roofs, on concrete stumps. They were probably constructed in the 1950s.

## **BUILDING DETAILS**

<b>Type</b>	Residential	
<b>Construction Date(s)</b>	Circa 1950s	<b>Design Date</b>
<b>Sources for dates</b>	Style of building	
<b>Original use</b>	MMA Hostel	<b>Later / Current use(s)</b> Hostel
<b>Construction materials</b>	Fibro and iron	
<b>Alterations</b>	Not known	
<b>Intactness of fabric</b>	Good	
<b>Condition</b>	Good	
<b>Architect / designer / builder</b>		

## **SITE TYPE**

Residential Building

## **STATEMENT OF SIGNIFICANCE**

Significant to the history of the development of Derby. Significant to the history of aviation in WA.

## **SUPPORTING INFORMATION**

### **Photographs**

### **Bibliography**

Leigh Edmonds Notes on aviation history in WA prepared for Conservation Plan of Maylands Police Academy for the BMA June 1995.

### **Local knowledge**

## **HISTORIC THEME AND SUB THEME**

Transport and Communications

## **PREVIOUS LISTINGS**



**MANAGEMENT**

Significant but not essential to an understanding of the history of the district; photographically record the place prior to any major redevelopment or demolition.

**OTHER SITE DETAILS****C/T : Vol/Folio****Lot/Location****Diagram/Plan****Reserve No.****Vesting****Purpose****Leases****NOTES**

**MUNICIPAL INVENTORY PLACE RECORD FORM  
SHIRE OF DERBY / WEST KIMBERLEY**

**WOOLWORTHS**

**L.G.A. Site No.**

**HCWA No.**

**ASSESSED BY**

**Name** Heritage and Conservation Professionals

**Contact details** PO Box 7576 Cloisters Square, Perth, 6850. Ph. (09) 4815021.

**Date** Nov. 1994.

**Review**

**Owner/Occupier consulted (Y/N)**

**Person**

**Date**

**PHOTOGRAPH**

**Date** Nov. 1994.



**NAME ADDRESS & OWNERSHIP OF THE PLACE**

**Name of Place** Woolworths

**Former/Other Names** McGovern and Thompson's Store; Knapp's Store.

**Address/Location/Map Reference** Lots 41 and 42 Loch St, cnr. Waycott St, Derby.

**Owners Name** Woolworths

**Contact details**

**Occupied** Yes

**Public Access** Yes

## **DESCRIPTION OF THE PLACE AND ITS SETTING**

The site currently occupied by the Derby Woolworths supermarket has been associated with the retail trade from the early 1900s. It was previously the site of various stores including McGovern and Thompson's Store and Knapp's Store. The town's first hotel was built adjacent to this site and the store's location is believed to have been convenient for camel, bulloch and donkey teams arriving at the end of the tramway.

## **SITE TYPE**

Historic Site

## **STATEMENT OF SIGNIFICANCE**

Significant to the history of the development of Derby.

## **SUPPORTING INFORMATION**

### **Photographs**

### **Bibliography**

### **Local knowledge**

Information provided at community meeting Derby, Nov. 1994.

## **HISTORIC THEME AND SUB THEME**

Occupations

## **PREVIOUS LISTINGS**

## **MANAGEMENT**

Significant site; recognise with a plaque or place name.

## **OTHER SITE DETAILS**

C/T : Vol/Folio

Lot/Location

Diagram/Plan

Reserve No.

Vesting

Purpose

Leases

## **NOTES**

**MUNICIPAL INVENTORY PLACE RECORD FORM  
SHIRE OF DERBY / WEST KIMBERLEY**

**DERBY ROMAN CATHOLIC CHURCH**

**L.G.A. Site No.**

**HCWA No.**

**ASSESSED BY**

**Name** Heritage and Conservation Professionals

**Contact details** PO Box 7576 Cloisters Square, Perth, 6850. Ph. (09) 4815021.

**Date** Nov. 1994.

**Review**

**Owner/Occupier consulted (Y/N)**

**Person**

**Date**

**PHOTOGRAPH**

**Film No.**

**Neg No.**

**Date** Nov. 1994.



**NAME ADDRESS & OWNERSHIP OF THE PLACE**

**Name of Place** Derby Roman Catholic Church

**Former/Other Names**

**Address/Location/Map Reference** Lots 386 and 387 Loch St, Derby.

**Owners Name**

**Contact details**

**Occupied** Yes

**Public Access** Restricted

## **DESCRIPTION OF THE PLACE AND ITS SETTING**

The existing Roman Catholic Church in Derby was built circa the 1960s by Frank Rodrigues. It is of frame construction with fibro (asbestos) wall linings. It is attractively proportioned and detailed.

There is a memorial stone located in front of the church dedicated to the memory of Palatine Father Alphonse Bleuschwitz, missionary pioneer 1937-1993; First Missionary Father Duncan McNab 1.4.1884 and Clare Lucy Bowler, lay missionary of the Parish of Derby 1961-1991.

## **BUILDING DETAILS**

**Type** Church

**Construction Date(s)** Circa 1960s **Design Date**

**Sources for dates** Community information

**Original use** **Later / Current use(s)**

**Construction materials** Fibro (asbestos) panels

**Alterations**

**Intactness of fabric**

**Condition** Good

**Architect / designer /builder** Frank Rodrigues (builder)

## **SITE TYPE**

Church building

## **STATEMENT OF SIGNIFICANCE**

Significant to the history of the Roman Catholic Church in Derby. Social significance.

## **SUPPORTING INFORMATION**

**Photographs**

**Bibliography**

**Local knowledge**

Memorial Stone

## **HISTORIC THEME AND SUB THEME**

Social and civic activities

## **PREVIOUS LISTINGS**

## **MANAGEMENT**

Significant site. Conserve the memorial stone in front of the church. Assess the building in more detail when considering a development application.

**OTHER SITE DETAILS****C/T : Vol/Folio****Diagram/Plan****Reserve No.****Purpose****Leases****Lot/Location****Vesting****NOTES**

**MUNICIPAL INVENTORY PLACE RECORD FORM  
SHIRE OF DERBY / WEST KIMBERLEY**

**DERBY ANGLICAN CHURCH**

**L.G.A. Site No.**

**HCWA No.**

**ASSESSED BY**

**Name** Heritage and Conservation Professionals

**Contact details** PO Box 7576 Cloisters Square, Perth, 6850. Ph. (09) 4815021.

**Date** Nov. 1994.

**Review**

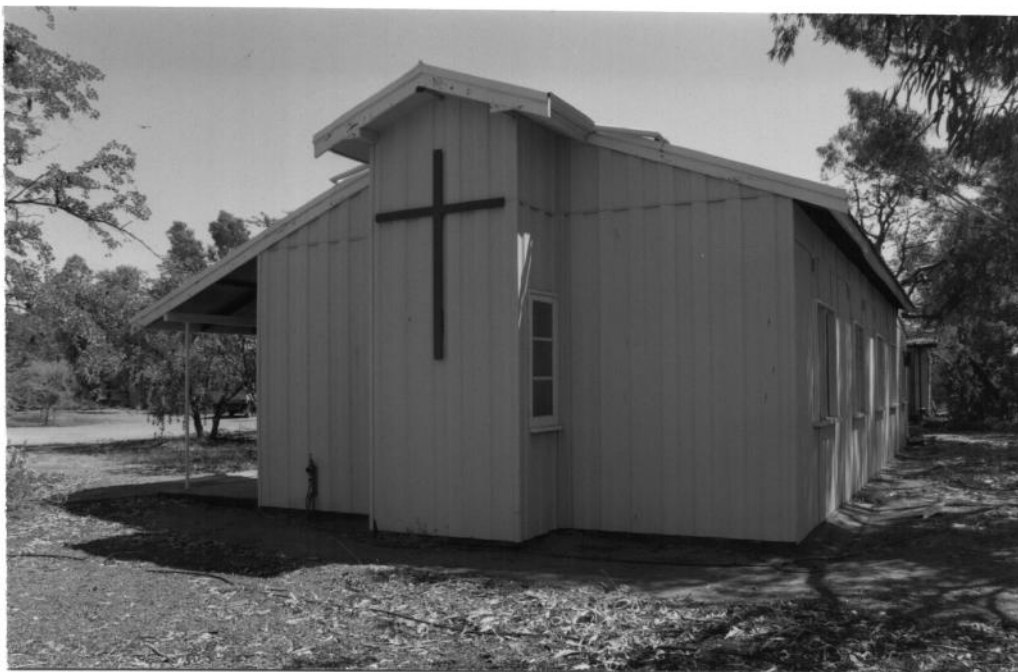
**Owner/Occupier consulted (Y/N)**

**Person**

**Date**

**PHOTOGRAPH**

**Date** Nov. 1994.



**NAME ADDRESS & OWNERSHIP OF THE PLACE**

**Name of Place** Derby Anglican Church

**Former/Other Names**

**Address/Location/Map Reference** Lots 288 and 289 Loch St, Derby.

**Owners Name**

**Contact details**

**Occupied**

**Public Access**

**DESCRIPTION OF THE PLACE AND ITS SETTING**

The original Derby Anglican Church was built of corrugated iron circa 1915. This church was destroyed by a cyclone in the 1940s. The existing church was constructed in 1953.

**BUILDING DETAILS**

**Type** Church

**Construction Date(s)** 1953 **Design Date**

**Sources for dates** Community information

**Original use** Church **Later / Current use(s)** Church

**Construction materials** Fibro (asbestos) panels

**Alterations**

**Intactness of fabric**

**Condition**

**Architect / designer / builder**

**SITE TYPE**

Church building

**STATEMENT OF SIGNIFICANCE**

Significant to the development of Derby, representing the continued presence of the Anglican Church on the site.

**SUPPORTING INFORMATION**

**Photographs**

**Bibliography**

**Local knowledge**

Community information, Nov. 1994.

**HISTORIC THEME AND SUB THEME**

Social and civic activities.

**PREVIOUS LISTINGS****MANAGEMENT**

Significant site. Building not significant, photographically record prior to any major development or demolition.

**OTHER SITE DETAILS**

**C/T : Vol/Folio**

**Lot/Location**

**Diagram/Plan**

**Reserve No.**

**Vesting**

**Purpose**

**Leases**

**NOTES**



**MUNICIPAL INVENTORY PLACE RECORD FORM  
SHIRE OF DERBY / WEST KIMBERLEY**

**HOUSE, LOT 342, NO. 28 ROWAN ST.**

**L.G.A. Site No.**

**HCWA No.**

**ASSESSED BY**

**Name** Heritage and Conservation Professionals

**Contact details** PO Box 7576 Cloisters Square, Perth, 6850. Ph. (09) 4815021.

**Date** Nov. 1994.

**Review**

**Owner/Occupier consulted (Y/N)**

**Person**

**Date**

**PHOTOGRAPH**

**Date** Nov. 1994.



**NAME ADDRESS & OWNERSHIP OF THE PLACE**

**Name of Place** House, Lot 342, No. 28 Rowan St, Derby.

**Former/Other Names**

**Address/Location/Map Reference** Lot 342, No. 28 Rowan St, Derby.

**Owners Name** Ms Rose Newman

**Contact details**

**Occupied** Yes

**Public Access** No

**DESCRIPTION OF THE PLACE AND ITS SETTING**

Fibro and iron house. Good example of early home in Derby.

**BUILDING DETAILS**

Type Residential

Construction Date(s) Not known Design Date

Sources for dates

Original use Residential

Later / Current use(s) Residential

Construction materials Fibro (asbestos) and iron

Alterations Not known

Intactness of fabric Not known

Condition Good

Architect / designer / builder Not known

**SITE TYPE**

Residential Building - house

**STATEMENT OF SIGNIFICANCE**

Social and aesthetic significance as an example of an early Derby home.

**SUPPORTING INFORMATION**

Photographs

Bibliography

Local knowledge

**HISTORIC THEME AND SUB THEME**

Demographic settlement and mobility

**PREVIOUS LISTINGS****MANAGEMENT**

Assess in more detail when considering a development application.

**OTHER SITE DETAILS**

C/T : Vol/Folio

Lot/Location

Diagram/Plan

Reserve No.

Vesting

Purpose

Leases

**NOTES**

**MUNICIPAL INVENTORY PLACE RECORD FORM  
SHIRE OF DERBY / WEST KIMBERLEY**

**HOUSE, LOT 244 VILLIERS ST**

**L.G.A. Site No.**

**HCWA No.**

**ASSESSED BY**

**Name** Heritage and Conservation Professionals

**Contact details** PO Box 7576 Cloisters Square, Perth, 6850. Ph. (09) 4815021.

**Date** Nov. 1994.

**Review**

**Owner/Occupier consulted (Y/N)**

**Person**

**Date**

**PHOTOGRAPH**

**Date** Nov. 1994.



**NAME ADDRESS & OWNERSHIP OF THE PLACE**

**Name of Place** House, Lot 244 Villiers St, Derby.

**Former/Other Names**

**Address/Location/Map Reference** Cnr Villiers and Neville Streets, Derby.

**Owners Name** Cheryl Grant

**Contact details**

**Occupied** Yes

**Public Access** No

## **DESCRIPTION OF THE PLACE AND ITS SETTING**

House built by Mr and Mrs Hugh Watt circa 1944/5 after the death of their only child in 1944. After Mr Watt died in 1958 Mrs Watt took in a boarder Dennis Jaques, to whom she left the house on her death in 1976.

House constructed of fibro (asbestos) walls and roof on a concrete slab. Simple floor plan with one main room and bedroom, plus sleepouts with high ceilings.

## **BUILDING DETAILS**

**Type** Residential

**Construction Date(s)** Circa 1945 **Design Date**

**Sources for dates** Beryl Ah Chee

**Original use** Residential

**Later / Current use(s)** Residential

**Construction materials** Fibro and concrete

**Alterations** Not known

**Intactness of fabric** Not known

**Condition** Fair

**Builder** Hugh Watt

## **SITE TYPE**

Residential Building - house

## **STATEMENT OF SIGNIFICANCE**

Social and aesthetic significance as an example of a Derby home dating from the 1940s.

## **SUPPORTING INFORMATION**

**Photographs**

**Bibliography**

**Local knowledge**

Beryl Ah Chee

## **HISTORIC THEME AND SUB THEME**

Demographic settlement and mobility

## **PREVIOUS LISTINGS**

## **MANAGEMENT**

Assess in more detail when considering a development application.

## **OTHER SITE DETAILS**

**C/T : Vol/Folio**

**Lot/Location**

**Diagram/Plan**

**Reserve No.**

**Vesting**

**Purpose**

**Leases**

**NOTES**

**MUNICIPAL INVENTORY PLACE RECORD FORM  
SHIRE OF DERBY / WEST KIMBERLEY**

**HOUSE, LOT 259 LOCH ST**

**L.G.A. Site No.**

**HCWA No.**

**ASSESSED BY**

**Name** Heritage and Conservation Professionals

**Contact details** PO Box 7576 Cloisters Square, Perth, 6850. Ph. (09) 4815021.

**Date** Nov. 1994.

**Review**

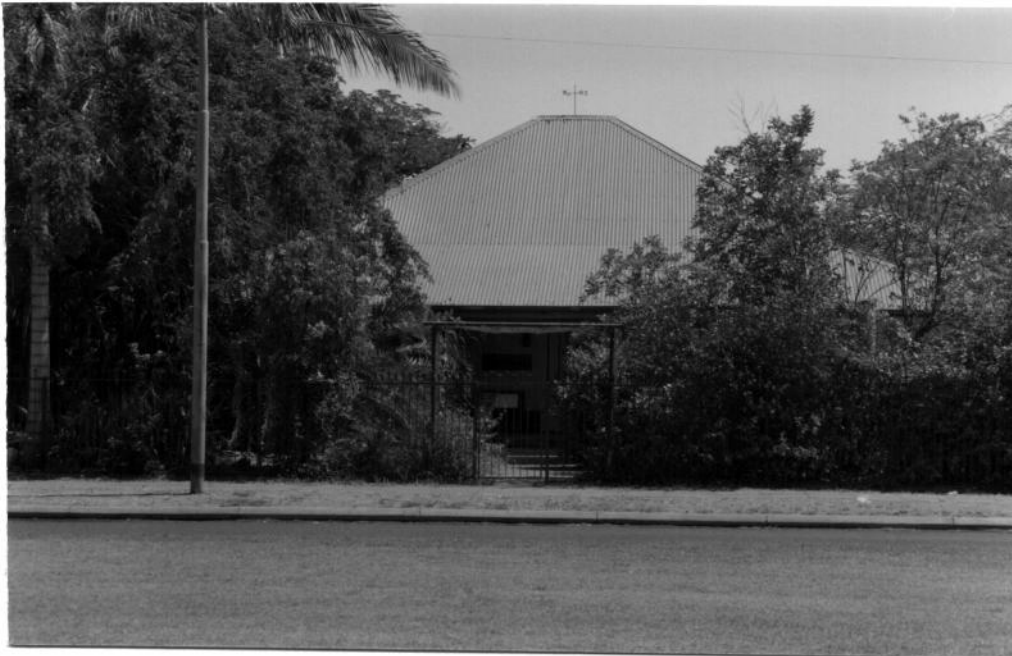
**Owner/Occupier consulted (Y/N)**

**Person**

**Date**

**PHOTOGRAPH**

**Date** Nov. 1994.



**NAME ADDRESS & OWNERSHIP OF THE PLACE**

**Name of Place** House, Lot 259 Loch St.

**Former/Other Names**

**Address/Location/Map Reference** Lot 259 Loch St, Derby.

**Owners Name**

**Contact details**

**Occupied** Yes

**Public Access** No

**DESCRIPTION OF THE PLACE AND ITS SETTING**

House that used to be associated with the Derby Road Board. Timber frame, weatherboard wall linings and corrugated iron roof.

**BUILDING DETAILS**

Type Residential

Construction Date(s) Not Known Design Date

Sources for dates

Original use Residential

Later / Current use(s) Residential

Construction materials

Alterations Not Known

Intactness of fabric Not Known

Condition Not Known

Architect / designer / builder Not Known

**SITE TYPE**

Residential Building - house

**STATEMENT OF SIGNIFICANCE**

Social and aesthetic significance as an example of an early Derby home. Significant for associations with the Derby Road Board.

**SUPPORTING INFORMATION**

Photographs

Bibliography

Local knowledge

**HISTORIC THEME AND SUB THEME**

Demographic settlement and mobility

**PREVIOUS LISTINGS****MANAGEMENT**

Retain and conserve if possible; endeavour to conserve the significance of the place through the provisions of the town planning scheme; photographically record the place prior to any major redevelopment or demolition.

**OTHER SITE DETAILS**

C/T : Vol/Folio

Lot/Location

Diagram/Plan

Reserve No.

Vesting

Purpose

Leases

NOTES

**MUNICIPAL INVENTORY PLACE RECORD FORM  
SHIRE OF DERBY/WEST KIMBERLEY**

**SHOP FRONTS, CLARENDON STREET**

**L.G.A. Site No.**

**HAWAII No.**

**ASSESSED BY**

**Name** Heritage and Conservation Professionals

**Contact details** PO Box 7576 Cloisters Square, Perth, 6850. Ph. (09) 4815021.

**Date** Nov. 1994.

**Review**

**Owner/Occupier consulted (Y/N)**

**Person**

**Date**

**PHOTOGRAPH**

**Date** Nov. 1994.



**NAME ADDRESS & OWNERSHIP OF THE PLACE**

**Name of Place** Shop Fronts, Clarendon St.

**Former/Other Names**

**Address/Location/Map Reference** Lots 331 to 338 Clarendon St, Derby.

**Owners Name**

**Contact details**

**Occupied** Yes

**Public Access** Yes

**DESCRIPTION OF THE PLACE AND ITS SETTING**

Precinct of commercial properties and shops that developed in the 1960s and 70s as the commercial centre of Derby.

**SITE TYPE**

Commercial Precinct

**STATEMENT OF SIGNIFICANCE**

Significant as representative of the period of growth of Derby in the 1960s.

**SUPPORTING INFORMATION**

**Photographs**

**Bibliography**

**Local knowledge**

**HISTORIC THEME AND SUB THEME**

Occupations

**PREVIOUS LISTINGS****MANAGEMENT**

Consider the style of the precinct when considering a planning application.  
Conserve the scale and style of existing commercial premises.

**OTHER SITE DETAILS**

**C/T : Vol/Folio**

**Lot/Location**

**Diagram/Plan**

**Reserve No.**

**Vesting**

**Purpose**

**Leases**

**NOTES**



**MUNICIPAL INVENTORY PLACE RECORD FORM  
SHIRE OF DERBY/WEST KIMBERLEY**

**ST JOSEPH'S HOSTEL**

**L.G.A. Site No.**

**HCWA No.**

**ASSESSED BY**

**Name** Heritage and Conservation Professionals

**Contact details** PO Box 7576 Cloisters Square, Perth, 6850. Ph. (09) 4815021.

**Date**

**Review**

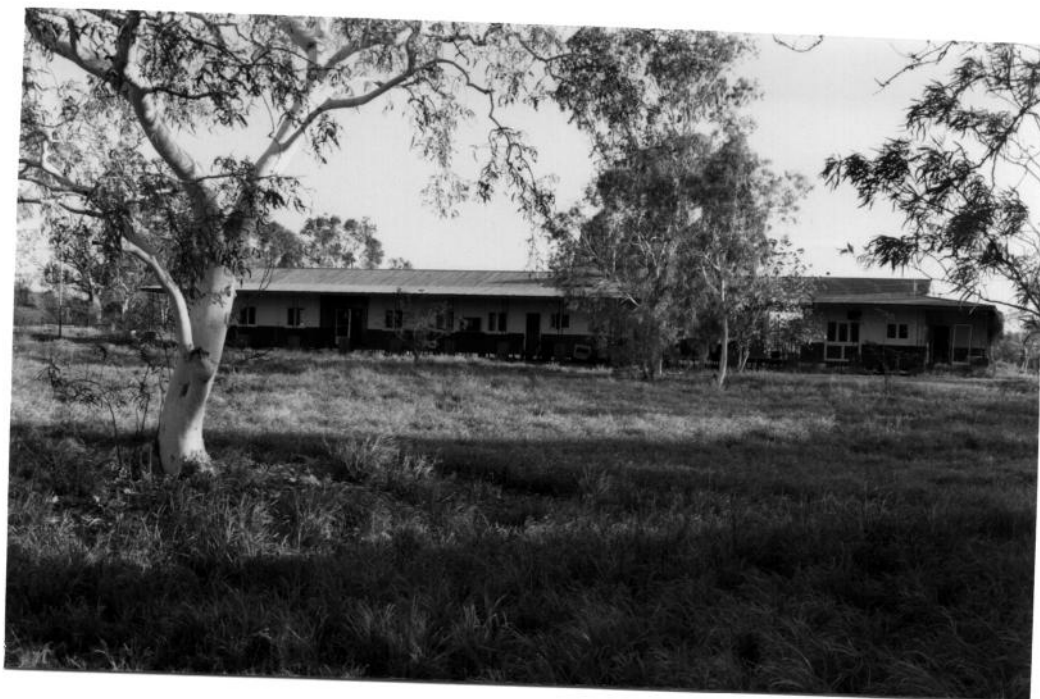
**Owner/Occupier consulted (Y/N)**

**Person**

**Date**

**PHOTOGRAPH**

**Date** Nov. 1994



**NAME ADDRESS & OWNERSHIP OF THE PLACE**

**Name of Place** St Joseph's Hostel

**Former/Other Names**

**Address/Location/Map Reference** Reserve 24905, Cnr Ashley and Wodehouse Sts, Derby.

**Owners Name**

**Contact details**

**Occupied** Yes

**Public Access** No

**DESCRIPTION OF THE PLACE AND ITS SETTING**

Residential hostel for Aboriginal school children established 1950s by the Roman Catholic Church.

Timber framed residential building typical of the period.

**BUILDING DETAILS**

**Type** Residential

**Construction Date(s)** Circa 1950s **Design Date**

**Sources for dates** Style of building

**Original use** Residential

**Later / Current use(s)** Vacant

**Construction materials** Timber frame, fibro (asbestos)

**Alterations** Not Known

**Intactness of fabric** Not Known

**Condition** Not Known

**Architect / designer / builder**

**SITE TYPE**

Building - Residential hostel

**STATEMENT OF SIGNIFICANCE**

Significant to the history of the development of Derby.

**SUPPORTING INFORMATION**

**Photographs**

**Bibliography**

**Local knowledge**

**HISTORIC THEME AND SUB THEME**

Demographic settlement and mobility.

**PREVIOUS LISTINGS****MANAGEMENT**

Assess in more detail when considering a development application. Record photographically prior to development or demolition. Further research into the significance of the place for the Aboriginal people who lived there is appropriate.

**OTHER SITE DETAILS**

**C/T : Vol/Folio**

**Lot/Location**

**Diagram/Plan**

**Reserve No.** 24905

**Vesting**

**Purpose**

**Leases**

**NOTES**

**MUNICIPAL INVENTORY PLACE RECORD FORM  
SHIRE OF DERBY/WEST KIMBERLEY**

**UAM HOSTEL**

**L.G.A. Site No.**

**HCWA No.**

**ASSESSED BY**

**Name** Heritage and Conservation Professionals

**Contact details** PO Box 7576 Cloisters Square, Perth, 6850. Ph. (09) 4815021.

**Name** Nov. 1994

**Contact details**

**Date**

**Review**

**Owner/Occupier consulted (Y/N)**

**Person**

**Date**

**PHOTOGRAPH**

**Date** Not photographed

**NAME ADDRESS & OWNERSHIP OF THE PLACE**

**Name of Place** UAM Hostel

**Former/Other Names**

**Address/Location/Map Reference** Reserve 24904, Cnr Alfonsas and Ashley Sts, Derby.

**Owners Name**

**Contact details**

**Occupied** No

**Public Access** No

**DESCRIPTION OF THE PLACE AND ITS SETTING**

Residential hostel for Aboriginal school children established 1950s by the United Aborigines Mission.

Timber framed residential building typical of the period.

**BUILDING DETAILS**

**Type** Residential

**Construction Date(s)** Circa 1950s **Design Date**

**Sources for dates** Style of building

**Original use** Residential

**Later / Current use(s)** Vacant

**Construction materials** Timber frame, fibro (asbestos)

**Alterations** Not Known

**Intactness of fabric** Not Known

**Condition** Not Known

**Architect / designer / builder**

**SITE TYPE**

Building - Residential hostel

**STATEMENT OF SIGNIFICANCE**

Significant to the history of the development of Derby.

**SUPPORTING INFORMATION**

Photographs

Bibliography

Local knowledge

**HISTORIC THEME AND SUB THEME**

Demographic settlement and mobility.

**PREVIOUS LISTINGS****MANAGEMENT**

Assess in more detail when considering a development application. Record photographically prior to development or demolition. Further research into the significance of the place for the Aboriginal people who lived there is appropriate.

**OTHER SITE DETAILS**

C/T : Vol/Folio

Lot/Location

Diagram/Plan

Reserve No. 24904

Vesting

Purpose

Leases

NOTES

**MUNICIPAL INVENTORY PLACE RECORD FORM  
SHIRE OF DERBY/WEST KIMBERLEY**

**LION'S PARK**

**L.G.A. Site No.**

**HCWA No.**

**ASSESSED BY**

**Name** Heritage and Conservation Professionals

**Contact details** PO Box 7576 Cloisters Square, Perth, 6850. Ph. (09) 4815021.

**Date**

**Review**

**Owner/Occupier consulted (Y/N)**

**Person**

**Date**

**PHOTOGRAPH**

**Date** Nov. 1994.



**NAME ADDRESS & OWNERSHIP OF THE PLACE**

**Name of Place** Derby Lion's Park

**Former/Other Names** Derby Tennis Courts

**Address/Location/Map Reference** Cnr Loch and Johnston Sts and extending to the ANZAC Memorial.

**Owners Name** Shire of Derby/West Kimberley

**Contact details**

**Occupied** No

**Public Access** Yes

## **DESCRIPTION OF THE PLACE AND ITS SETTING**

The Derby Lion's Park provides a foreground for the Derby Civic Centre and was established through a Lions Club project in 1964 at the same time as the opening of the Civic Centre. The ANZAC Memorial was added in 1990. The park includes relics from the S.S. Colac that ran aground off Derby in 1910. These include an anchor and a propeller screw which contains a time capsule placed there in 1983 at the time of the town's centenary celebrations. The gardens contain three majestic boab trees, a selection of native Kimberley eucalypts and a number of introduced species. Picnic facilities are also provided.

Site believed to have been site of the town's first tennis courts.

## **SITE TYPE**

Town Park

## **STATEMENT OF SIGNIFICANCE**

Significant as a project developed by a community effort in 1964 and exhibiting civic pride in the town. Social and aesthetic significance.

## **SUPPORTING INFORMATION**

**Photographs**

**Bibliography**

**Local knowledge**

Pam Masters, Derby Tourist Bureau

## **HISTORIC THEME AND SUB THEME**

Social and civic activities

## **PREVIOUS LISTINGS**

## **MANAGEMENT**

Ensure continued management and protection of the park and its features and provide appropriate signs to indicate historic relics in the park.

## **OTHER SITE DETAILS**

**C/T : Vol/Folio**

**Lot/Location**

**Diagram/Plan**

**Reserve No.**

**Vesting**

**Purpose**

**Leases**

## **NOTES**

## **FITZROY CROSSING SITES**

**MUNICIPAL INVENTORY PLACE RECORD FORM  
SHIRE OF DERBY/WEST KIMBERLEY**

**OLD FITZROY CROSSING POLICE STATION  
PRECINCT**

**L.G.A. Site No.**

**HCWA No.** 40 0696

**ASSESSED BY**

**Name** Heritage and Conservation Professionals

**Contact details** PO Box 7576 Cloisters Square, Perth, 6850. Ph. (09) 4815021.

**Date**

**Review**

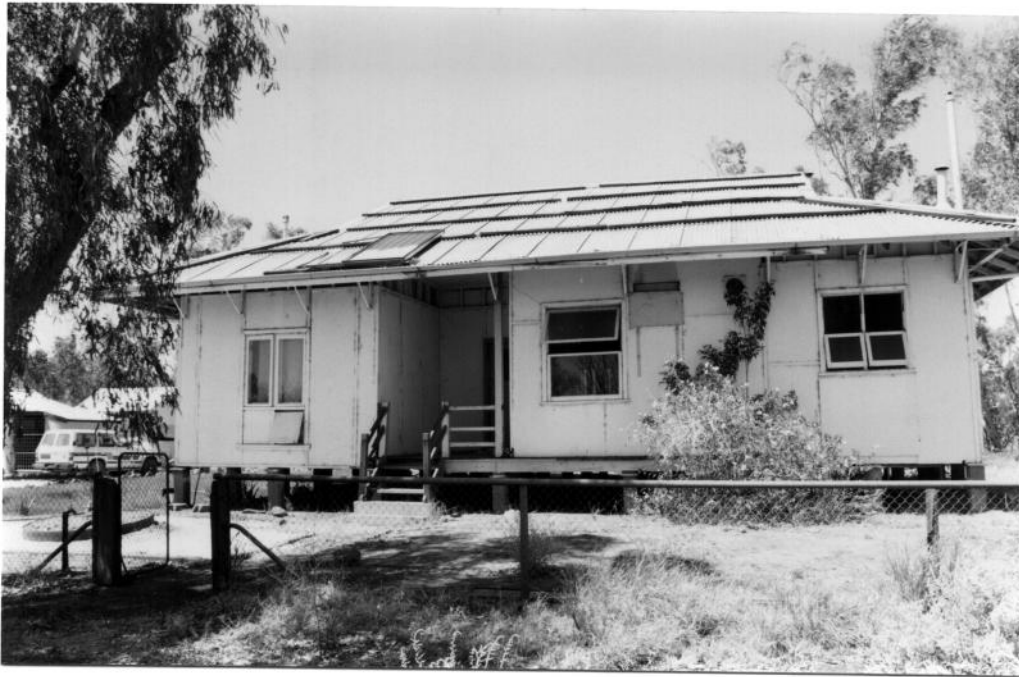
**Owner/Occupier consulted (Y/N)**

**Person**

**Date**

**PHOTOGRAPH**

**Date** Nov. 1994.



**Sergeant's Quarters**

**NAME ADDRESS & OWNERSHIP OF THE PLACE**

**Name of Place** DarlIngunaya Community,

**Former/Other Names** Fitzroy Crossing Police Station

**Address/Location/** Old Fitzroy Crossing Town Site

**Map Reference** Noonkanbah SE 51.12 YV7489.

**Owners Name** Shire of Derby/West Kimberley

**Contact details** DarlIngunaya Community

**Occupied** Yes

**Public Access** Yes



## **DESCRIPTION OF THE PLACE AND ITS SETTING**

The Fitzroy Crossing Police Station precinct contains buildings relating to the police use of the place dating back to the 1940s. However the use of the site by the police dates back at least to the 1930s, and possibly to the turn of the century.

Between 1950 and 1952 the existing sergeants quarters, cell block and exercise yard and the toilet block were constructed. On completion of the new police quarters it was discovered that no provision had been made for the erection of a police office and store. These were subsequently constructed in 1953. In 1968 the cell block was extended with the construction of the female cell and exercise yard and in 1974 the police office and store was extended with the erection of a storeroom.

The site also contains physical remnants of other structures and outbuildings including bough sheds and a garage and a trackers hut located to the south of the cell block. This is probably the oldest building in the precinct, is constructed of flat iron sheets and is typical of huts found throughout the region.

The police moved from the site in the late 1970s when the centre of Fitzroy Crossing shifted following the construction of the new bridge over the river. During the 1980s the sergeants quarters was used by CALM to house the ranger in charge of Geikie Gorge, Noel Nannup.

The site is currently vested in the Shire of Derby/West Kimberley and leased to the Darlun Gunaya Aboriginal Community.

## **BUILDING DETAILS**

**Type** Residence - Sergeants Quarters

**Construction Date(s)** 1950-52 **Design Date** 1950-52

**Sources for dates** Department of Public Works; Fitzroy Crossing Police Station; 1950. WA. Archives.

**Original use** Residential **Later / Current use(s)** Vacant

**Construction materials** Timber frame, concrete stumps, fibro (asbestos)

**Alterations** Infill to front and back verandahs

**Intactness of fabric** Good

**Condition** Fair

**Architect / designer / builder** PWD WA

## **BUILDING DETAILS**

**Type** Lockup

**Construction Date(s)** 1950-52 **Design Date** 1950-52

**Sources for dates** Department of Public Works; Fitzroy Crossing Police Station; 1950. WA. Archives.

**Original use** Lockup **Later / Current use(s)** Museum

**Construction materials** Fibro, iron, timber frame.

**Alterations** Extended 1970s.

**Intactness of fabric** Good

**Condition** Good

**Architect / designer / builder** PWD WA

**BUILDING DETAILS****Type** Office and Store**Construction Date(s)** 1953**Design Date** 1953**Sources for dates** Department of Public Works; Fitzroy Crossing Police Station; 1950. WA. Archives.**Original use** Office**Later / Current use(s)** Office**Construction materials** Concrete slab, timber frame, fibro and iron**Alterations** Extended 1970s, conserved 1990s.**Intactness of fabric** Good**Condition** Good**Architect / designer / builder** PWD WA**BUILDING DETAILS****Type** Trackers Hut**Construction Date(s)** Not known**Design Date****Sources for dates****Original use** Trackers Hut**Later / Current use(s)** Kitchen**Construction materials** Flat galvanised iron sheets**Alterations** Fireplace**Intactness of fabric** Good**Condition** Good**Architect / designer / builder** Not known**SITE TYPE**

Police Precinct

**STATEMENT OF SIGNIFICANCE**

The police precinct is historically and socially significant as representative of the police facility in Fitzroy Crossing. The buildings generally represent a sequence of police buildings on the site and continuous use of the site for police purposes from at least 1939 and possibly from the turn of the century. The site and buildings represent the roles of the Police Department and the Public Works Department in the Kimberley region.

The adaptive reuse of the site and buildings first by CALM in the 1980s and currently by the DarlNgunaya Aboriginal Community is significant as it represents a theme common to the history of the Kimberley region, of reusing existing resources for different purposes and enterprises.

## SUPPORTING INFORMATION

### Photographs

### Bibliography

Rosemary Rosario; *Conservation Plan for the Sergeants Quarters at Fitzroy Crossing*; Prepared for the Shire of Derby/West Kimberley, March 1995.

### Local knowledge

## HISTORIC THEME AND SUB THEME

Social and civic activities.

## PREVIOUS LISTINGS

Heritage Council Database

## MANAGEMENT

Highest level of protection appropriate; recommended for entry into the State Register of Heritage Places; provide maximum encouragement to the owner to conserve the significance of the place.

## OTHER SITE DETAILS

C/T : Vol/Folio

Lot/Location

Diagram/Plan

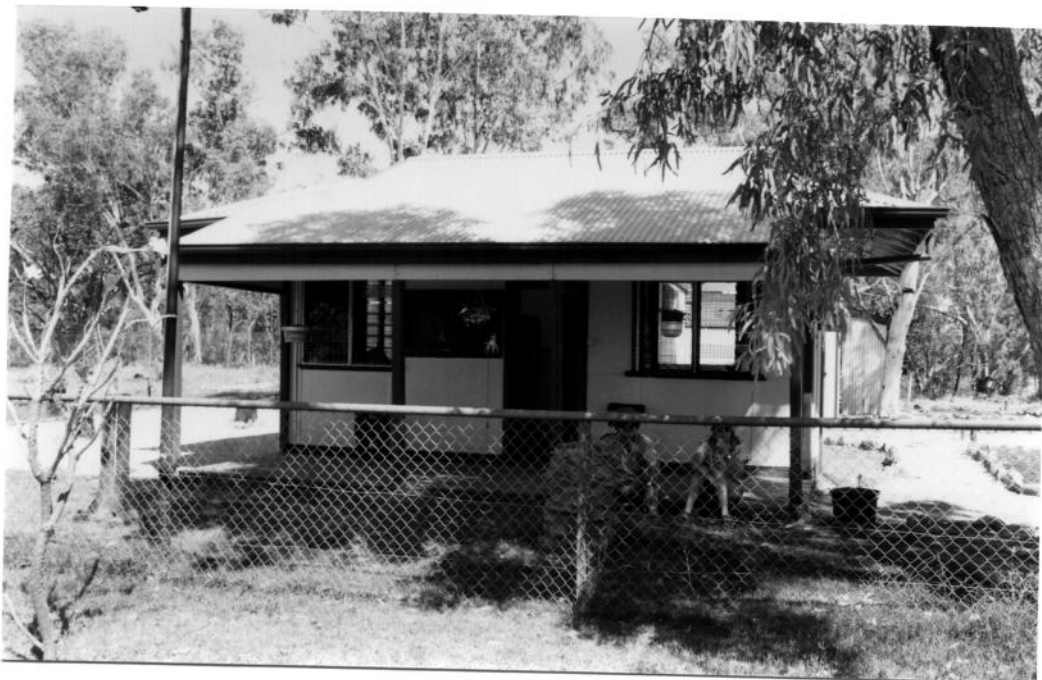
Reserve No.

Vesting

Purpose

Leases

## NOTES



**Police Office and Store**



**Police Lockup**



**Trackers Hut**

**MUNICIPAL INVENTORY PLACE RECORD FORM  
SHIRE OF DERBY/WEST KIMBERLEY**

**FITZROY CROSSING BACKPACKERS HOSTEL  
FORMER POST OFFICE**

**L.G.A. Site No.**

**HCWA No.**

**ASSESSED BY**

**Name** Heritage and Conservation Professionals

**Contact details** PO Box 7576 Cloisters Square, Perth, 6850. Ph. (09) 4815021.

**Date** Nov. 1994.

**Review**

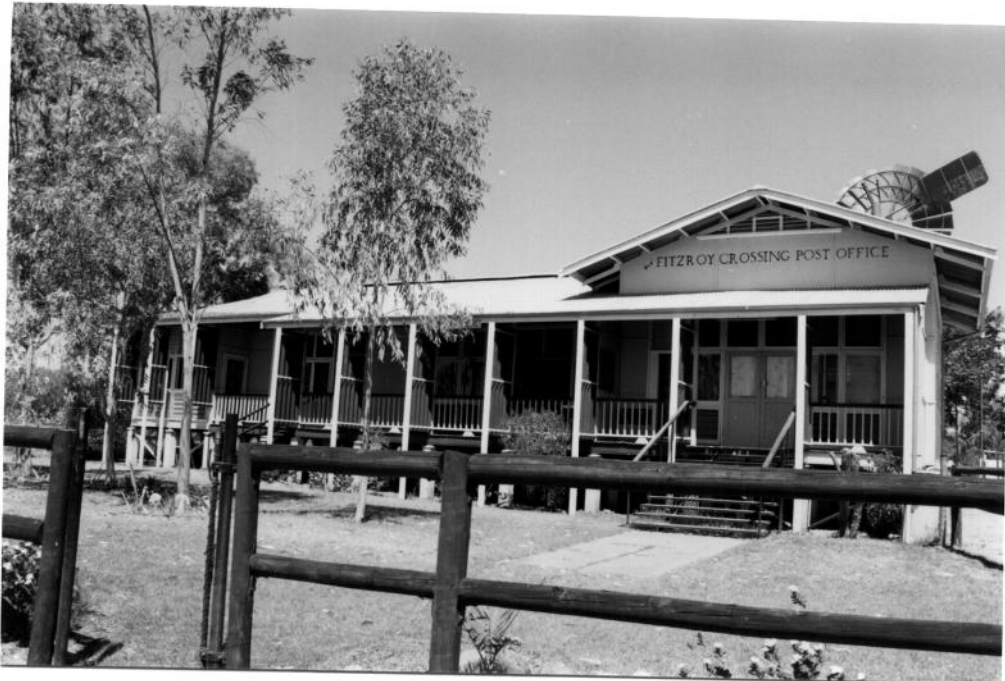
**Owner/Occupier consulted (Y/N)**

**Person**

**Date**

**PHOTOGRAPH**

**Date** Nov. 1994.



**NAME ADDRESS & OWNERSHIP OF THE PLACE**

**Name of Place** Fitzroy Crossing Backpackers Hostel

**Former/Other Names** Fitzroy Crossing Post Office

**Address/Location/** Old Fitzroy Crossing Town Site

**Map Reference** Noonkanbah SE 51.12 YV7489

**Owners Name** Shire of Derby/West Kimberley

**Contact details**

**Occupied** Yes

**Public Access** Yes

## **DESCRIPTION OF THE PLACE AND ITS SETTING**

The Fitzroy Crossing Backpackers Hostel is located in the building which was originally the Fitzroy Crossing Post Office. The building dates from circa the 1950s and has been restored and refurbished by the DarlNgunaya Aboriginal community who run the hostel.

The building is constructed of fibro panels on a timber frame with a corrugated iron roof and concrete stumps. The building contains a number of original features including louvre panels, original windows and original fittings, fireplace, cupboards etc, all of which are well maintained. The building also contains original and significant telegraph equipment in the office.

The garden setting behind the building contributes to the ambience of the place.

This post office is part of a sequence of post and telegraph stations serving the Fitzroy Crossing area dating from the 1890s and beginning with the telegraph station at Blue Bush Swamp in 1890.

## **BUILDING DETAILS**

**Type** Post Office

**Construction Date(s)** Circa 1950s **Design Date**

**Sources for dates** Style of building

**Original use** Post Office

**Later / Current use(s)** Hostel

**Construction materials** Concrete stumps, timber frame, fibro and corrugated iron

**Alterations** Not known

**Intactness of fabric** Very good

**Condition** Very good

**Architect / designer / builder**

## **SITE TYPE**

Public Building - Post Office

## **STATEMENT OF SIGNIFICANCE**

The Fitzroy Crossing Backpackers Hostel is very significant for its previous use as the Fitzroy Crossing Post Office. It is significant as part of a sequence of post and telegraph stations serving the Fitzroy Crossing area from the 1890s although others have been located on different sites.

**SUPPORTING INFORMATION****Photographs****Bibliography****Local knowledge****HISTORIC THEME AND SUB THEME**

Transport and Communications

**PREVIOUS LISTINGS****MANAGEMENT**

Highest level of protection appropriate; recommended for entry into the State Register of Heritage Places; provide maximum encouragement to the owner to conserve the significance of the place.

The site and building should be conserved in association with the adjacent Fitzroy Crossing Police Precinct.

**OTHER SITE DETAILS****C/T : Vol/Folio****Lot/Location****Diagram/Plan****Reserve No.****Vesting****Purpose**

**Leases** To DarlIngunaya Aboriginal community.

**NOTES**



**MUNICIPAL INVENTORY PLACE RECORD FORM  
SHIRE OF DERBY/WEST KIMBERLEY**

**SITE OF PREVIOUS AIM HOSPITAL**

**L.G.A. Site No.**

**HCWA No.**

**ASSESSED BY**

**Name** Heritage and Conservation Professionals

**Contact details** PO Box 7576 Cloisters Square, Perth, 6850. Ph. (09) 4815021.

**Date** Nov. 1994.

**Owner/Occupier consulted (Y/N)**

**Person**

**PHOTOGRAPH**

**Date** Nov. 1994.



**NAME ADDRESS & OWNERSHIP OF THE PLACE**

**Name of Place** Australian Inland Mission Hospital site.

**Former/Other Names**

**Address/Location** /Old Fitzroy Crossing Town Site

**Map Reference** Noonkanbah SE 51.12 YV7489.

**Owners Name** Shire of Derby/West Kimberley

**Contact details**

**Occupied** No

**Public Access** Yes



## **DESCRIPTION OF THE PLACE AND ITS SETTING**

The idea of establishing a hospital at Fitzroy Crossing was first considered by the Australian Inland Mission in 1922. The Fitzroy Crossing Hospital was eventually established in 1939. The two storey building has subsequently been demolished, however a plaque has been erected on the former hospital site as a memorial to the work carried out there. Sisters Margaret Coakes (Wells) and Alice Hall were the first of many AIM people to contribute to the service and care for the inland people provided by the hospital.

## **SITE TYPE**

Former Hospital Site

## **STATEMENT OF SIGNIFICANCE**

The site of the former AIM Hospital at Fitzroy Crossing is very significant to the history of the development of medical services to the Kimberley region and to the social history of the area.

## **SUPPORTING INFORMATION**

### **Photographs**

### **Bibliography**

Cathie Clement *Municipal Inventory for the Shire of Derby/West Kimberley; Thematic Framework*; 1995.

### **Local knowledge**

## **HISTORIC THEME AND SUB THEME**

Social and civic activities

## **PREVIOUS LISTINGS**

## **MANAGEMENT**

Historic site without built features. Recognise - for example with a plaque or name place.

Ensure continued maintenance of the memorial existing on the site. Consider preparation of a short history recording the activities and life of the AIM Hospital. This should be carried out by a qualified historian.

## **OTHER SITE DETAILS**

C/T : Vol/Folio

Lot/Location

Diagram/Plan

Reserve No.

Vesting

Purpose

Leases

## **NOTES**

**MUNICIPAL INVENTORY PLACE RECORD FORM  
SHIRE OF DERBY/WEST KIMBERLEY**

**CROSSING INN**

**L.G.A. Site No.**

**HCWA No.**

**ASSESSED BY**

**Name** Heritage and Conservation Professionals

**Contact details** PO Box 7576 Cloisters Square, Perth, 6850. Ph. (09) 4815021.

**Date** Nov. 1994.

**Review**

**Owner/Occupier consulted (Y/N)**

**Person**

**Date**

**PHOTOGRAPH**

**Date** Nov. 1994.



**NAME ADDRESS & OWNERSHIP OF THE PLACE**

**Name of Place** Crossing Inn

**Former/Other Names**

**Address/Location/Map Reference** Skuthorp Rd, Fitzroy Crossing

**Owners Name**

**Contact details**

**Occupied** Yes

**Public Access** Yes

## **DESCRIPTION OF THE PLACE AND ITS SETTING**

The Crossing Inn was established by Charles Blythe in 1897. At that time the place consisted of a store and an Inn selling wine, beer and spirits. Charles was the son of Joseph Blythe who established Noonkanbah Station for the Emanuels in the 1890s.

A number of buildings have been constructed on or near the site over the years. It is not clear whether remnants of the first building on the site remain incorporated into the manager's house which appears to be the earliest remaining structure. Further investigation is necessary to establish this.

## **SITE TYPE**

Commercial Building - Hotel

## **STATEMENT OF SIGNIFICANCE**

The Crossing Inn is significant for the continuous use of the site as an hotel probably from the 1890s. The place has played an important social role in the community of Fitzroy Crossing over that period.

## **SUPPORTING INFORMATION**

### **Photographs**

### **Bibliography**

Cathie Clement *Municipal Inventory for the Shire of Derby/West Kimberley; Thematic Framework*; 1995.

### **Local knowledge**

## **HISTORIC THEME AND SUB THEME**

Social and civic activities

## **PREVIOUS LISTINGS**

## **MANAGEMENT**

High level of protection appropriate. Provide encouragement to the owner to conserve the significance of the place. The social significance is important and should be recorded. Further investigation is required to establish the origins of the earliest remaining structures. Other buildings may be altered or adapted.

## **OTHER SITE DETAILS**

C/T : Vol/Folio

Lot/Location

Diagram/Plan

Reserve No.

Vesting

Purpose

Leases

## **NOTES**



**MUNICIPAL INVENTORY PLACE RECORD FORM  
SHIRE OF DERBY/WEST KIMBERLEY**

**LOW LEVEL RIVER CROSSING**

**L.G.A. Site No.**

**HCWA No.**

**ASSESSED BY**

**Name** Heritage and Conservation Professionals

**Contact details** PO Box 7576 Cloisters Square, Perth, 6850. Ph. (09) 4815021.

**Date**

**Review**

**Owner/Occupier consulted (Y/N)**

**Person**

**Date**

**PHOTOGRAPH**

**Date** Nov. 1994.



**NAME ADDRESS & OWNERSHIP OF THE PLACE**

**Name of Place** Low Level River Crossing

**Former/Other Names**

**Address/Location** /Nr. Fitzroy Crossing old town site.

**Map Reference** Noonkanbah SE 51.12 YV 7286

**Owners Name**

**Contact details**

**Occupied** Yes

**Public Access** Yes

## **DESCRIPTION OF THE PLACE AND ITS SETTING**

This was the main crossing point for the Fitzroy River prior to the construction of the new bridge in 1974. The original crossing was constructed in the 1930s and a wider structure was constructed on top of the first structure in the 1950s.

## **SITE TYPE**

River Crossing

## **STATEMENT OF SIGNIFICANCE**

The low level river crossing on the Fitzroy River at Fitzroy Crossing is very significant representing the main river crossing at this location until 1974.

## **SUPPORTING INFORMATION**

**Photographs**

**Bibliography**

Shire of Derby/West Kimberley Information Directory

**Local knowledge**

## **HISTORIC THEME AND SUB THEME**

Transport and Communications.

## **PREVIOUS LISTINGS**

## **MANAGEMENT**

Highest level of protection appropriate; recommended for entry into the State Register of Heritage Places; provide maximum encouragement to the owner to conserve the significance of the place.

Further research recommended.

## **OTHER SITE DETAILS**

**C/T : Vol/Folio**

**Lot/Location**

**Diagram/Plan**

**Reserve No.**

**Vesting**

**Purpose**

**Leases**

## **NOTES**

**MUNICIPAL INVENTORY PLACE RECORD FORM  
SHIRE OF DERBY/WEST KIMBERLEY**

**FITZROY CROSSING BRIDGE**

**L.G.A. Site No.**

**HCWA No.**

**ASSESSED BY**

**Name** Heritage and Conservation Professionals

**Contact details** PO Box 7576 Cloisters Square, Perth, 6850. Ph. (09) 4815021.

**Date**

**Review**

**Owner/Occupier consulted (Y/N)**

**Person**

**Date**

**PHOTOGRAPH**

**Date** Not photographed.

**NAME ADDRESS & OWNERSHIP OF THE PLACE**

**Name of Place** Fitzroy Crossing Bridge

**Former/Other Names**

**Address/Location/Map Reference** Fitzroy Crossing

**Owners Name**

**Contact details**

**Occupied** No

**Public Access** Yes

**DESCRIPTION OF THE PLACE AND ITS SETTING**

The Fitzroy Crossing Bridge was opened in 1974. As a result the centre of Fitzroy Crossing relocated, abandoning the old town site close to the low level river crossing.

**SITE TYPE**

Bridge

**STATEMENT OF SIGNIFICANCE**

Significant to the history of the development of transport and communications in the Kimberley.

**SUPPORTING INFORMATION**

**Photographs**

**Bibliography**

**Local knowledge**

**HISTORIC THEME AND SUB THEME**

Transport and Communications

**PREVIOUS LISTINGS**

**MANAGEMENT**

Ensure continued conservation and maintenance of the existing plaque recording the opening of the bridge.

**OTHER SITE DETAILS**

**C/T : Vol/Folio**

**Lot/Location**

**Diagram/Plan**

**Reserve No.**

**Vesting**

**Purpose**

**Leases**

**NOTES**



**MUNICIPAL INVENTORY PLACE RECORD FORM  
SHIRE OF DERBY/WEST KIMBERLEY**

**SECOND SCHOOL  
BURUWA  
FORMER MISSION SITE**

**L.G.A. Site No.**

**HCWA No.**

**ASSESSED BY**

**Name** Heritage and Conservation Professionals

**Contact details** PO Box 7576 Cloisters Square, Perth, 6850. Ph. (09) 4815021.

**Date** Nov. 1994.

**Review**

**Owner/Occupier consulted (Y/N)**

**Person**

**Date**

**PHOTOGRAPH**

**Date** Nov. 1994.



**NAME ADDRESS & OWNERSHIP OF THE PLACE**

**Name of Place** Noonkanbah Woolshed

**Former/Other Names** Second School, Buruwa, Former Mission site

**Address/Location/** Fitzroy Crossing

**Map Reference** Noonkanbah SE 51.12 YV7389

**Owners Name** Junjuwa Aboriginal Community

**Contact details** Dickie Cox Chairman Junjuwa

**Occupied** No

**Public Access** No

## **DESCRIPTION OF THE PLACE AND ITS SETTING**

The former United Aborigines Mission at Fitzroy Crossing was established in the 1940s on the site of the previous Aboriginal rations depot. A number of buildings were erected in connection with the mission, some of which are still standing on the site and used by the Junjuwa Aboriginal community for various purposes. The original church has been relocated to a site within the new community area. The second school which was used by the mission in the 1950s is still standing. The building is little more than a tin shed which must have been very uncomfortable for students and teachers alike for most of the year. The school was established by Mrs Pearl Smoker.

The site of the former telegraph station is believed to be adjacent to the site of the UAM.

## **BUILDING DETAILS**

**Type** School

**Construction Date(s)** Circa 1950s **Design Date**

**Sources for dates** John Smoker

**Original use** School **Later / Current use(s)** Vacant

**Construction materials** Galvanised iron sheets.

**Alterations** Not Known

**Intactness of fabric** Good

**Condition** Deteriorating

**Architect / designer / builder**

## **SITE TYPE**

Former Mission - school

## **STATEMENT OF SIGNIFICANCE**

The second school on the former United Aborigines Mission site at Fitzroy Crossing is significant as representative of a way of life (Missions) which was typical of a past era.

## **SUPPORTING INFORMATION**

**Photographs**

**Bibliography**

**Local knowledge**

John Smoker

## **HISTORIC THEME AND SUB THEME**

Demographic settlement and mobility

## **PREVIOUS LISTINGS**

**MANAGEMENT**

Consider the conservation of the school building as representative of the period during which the site was occupied by the UAM.

It is recommended that further work be undertaken to record the history and significance of the Mission and that this involve consultation with the Aboriginal people who were formerly associated with the place and also with the former UAM workers and missionaries.

It is recommended that consideration be given to compilation of a photographic record of the place as it formerly existed. Contact John Smoker regarding Mrs Smoker's Photographic collection as a possible resource.

**OTHER SITE DETAILS****C/T : Vol/Folio****Lot/Location****Diagram/Plan****Reserve No.****Vesting****Purpose****Leases****NOTES**

## **REGIONAL SITES**

**MUNICIPAL INVENTORY PLACE RECORD FORM  
SHIRE OF DERBY / WEST KIMBERLEY**

**TELEGRAPH STATION AT BLUE BUSH SWAMP**

**L.G.A. Site No.**

**HCWA No.**

**ASSESSED BY**

**Name** Heritage and Conservation Professionals

**Contact details** PO Box 7576 Cloisters Square, Perth, 6850. Ph. (09) 4815021.

**Date** Nov. 1994.

**Review**

**Owner/Occupier consulted (Y/N)**

**Person**

**Date**

**PHOTOGRAPH**

**Date** Not photographed

**NAME ADDRESS & OWNERSHIP OF THE PLACE**

**Name of Place** Original Telegraph Station, Blue Bush Swamp, Nr Fitzroy Crossing

**Former/Other Names**

**Address/Location** East of Fitzroy Crossing, Fossil Downs turn-off from Great Northern Highway

**Map Reference** Nookanbah SE 51 12 YV8284

**Owners Name**

**Contact details**

**Occupied**

**Public Access**

**DESCRIPTION OF THE PLACE AND ITS SETTING**

First Fitzroy Crossing Telegraph Station - used until circa 1906 when a new building was erected closer to Fitzroy Crossing. The building was constructed of stone and timber and consisted of five rooms surrounded by a verandah. There was one outer door and three small windows in the opposite wall. The building housed the Telegraph Station Master. The first was Charles Annear who later became a local pastoralist.

**BUILDING DETAILS****Type** Telegraph Station**Construction Date(s)** 1890**Design Date****Sources for dates** SAWA AN5/1; Police Department Acc 430; 280/9; Chief Office File.**Original use** Telegraph Station**Later / Current use(s)****Construction materials** Stone and timber**Alterations****Intactness of fabric****Condition** Ruin**Builder** Fessey**SITE TYPE**

Ruin

**STATEMENT OF SIGNIFICANCE**

The place has social significance as a remnant of the early communications network in the Kimberley.

**SUPPORTING INFORMATION****Photographs****Bibliography**

SAWA AN5/1; Police Department Acc 430; 280/9; Chief Office File.

**Local knowledge****HISTORIC THEME AND SUB THEME**

Transport and Communications

**PREVIOUS LISTINGS****MANAGEMENT**

Historic site. Conserve remnants of the original building if these remain. Recognise the site with a plaque or place name.

**OTHER SITE DETAILS****C/T : Vol/Folio****Lot/Location****Diagram/Plan****Reserve No.****Vesting****Purpose****Leases****NOTES**

**MUNICIPAL INVENTORY PLACE RECORD FORM  
SHIRE OF DERBY/WEST KIMBERLEY**

**POINT TORMENT**

**Site No.**

**HCWA No.**

**ASSESSED BY**

**Name** Heritage and Conservation Professionals

**Contact details** PO Box 7576 Cloisters Square, Perth, 6850. Ph. (09) 4815021.

**Date** **Review**

**Owner/Occupier consulted (Y/N)**

**Person** **Date**

**PHOTOGRAPH**

**Date** Not photographed

**NAME ADDRESS & OWNERSHIP OF THE PLACE**

**Name of Place** Point Torment Lighthouse

**Former/Other Names**

**Address/Location/Map Reference** Derby SE 51.7 WB6417

**Owners Name**

**Contact details**

**Occupied**

**Public Access**

**DESCRIPTION OF THE PLACE AND ITS SETTING**

Point Torment was a landing point for early mariners in the period 1818 to the 1880s. It was considered as a site for relocating the Derby port in the 1880s due to the shortcomings of the chosen site. However the idea was abandoned due to the failure of well sinkers to find fresh water.

There is currently a lighthouse at Point Torment.

**SITE TYPE**

Site of significant events.

**STATEMENT OF SIGNIFICANCE**

Point Torment is significant in the history of the settlement of Derby and the history of the port.

**SUPPORTING INFORMATION**

**Photographs**

**Bibliography**

Cathie Clement *Municipal Inventory for the Shire of Derby/West Kimberley; Thematic Framework*; 1995.

**Local knowledge**

**HISTORIC THEME AND SUB THEME**

Demographic settlement and mobility

**PREVIOUS LISTINGS****MANAGEMENT**

Historic site without built features. Recognise - for example with a plaque or place name. Lighthouse requires further assessment.

**OTHER SITE DETAILS**

C/T : Vol/Folio

Lot/Location

Diagram/Plan

Reserve No.

Vesting

Purpose

Leases

**NOTES**



**MUNICIPAL INVENTORY PLACE RECORD FORM  
SHIRE OF DERBY/WEST KIMBERLEY**

**CAMBALLIN**

**L.G.A. Site No.**

**HCWA No.**

**ASSESSED BY**

**Name** Heritage and Conservation Professionals

**Contact details** PO Box 7576 Cloisters Square, Perth, 6850. Ph. (09) 4815021.

**Date**

**Review**

**Owner/Occupier consulted (Y/N)**

**Person**

**Date**

**PHOTOGRAPH**

**Date** Not photographed

**NAME ADDRESS & OWNERSHIP OF THE PLACE**

**Name of Place** Camballin

**Former/Other Names**

**Address/Location/Map Reference**

**Owners Name**

**Contact details**

**Occupied** Yes

**Public Access** No

**DESCRIPTION OF THE PLACE AND ITS SETTING**

In the 1950s Kimberley Durack experimented with rice growing on the floodplains at Camballin. Land that had previously been used for lambing paddocks by Liveringa station was irrigated for the purpose. The experiments were largely unsuccessful. By 1969 the project had been taken over by The Australian Land and Cattle Company who were interested in damming the Fitzroy River for crops to fatten cattle. The Australian Land and Cattle Company abandoned the Camballin irrigation area in 1983 after floodwaters breached the levee banks constructed to control seasonal inundation from the Fitzroy River.

**SITE TYPE**

Site of significant agricultural research project

**STATEMENT OF SIGNIFICANCE**

The Camballin project is significant to the development of rural industries in the Kimberley.

**SUPPORTING INFORMATION****Photographs****Bibliography**

Cathie Clement *Municipal Inventory for the Shire of Derby/West Kimberley; Thematic Framework*; 1995.

**Local knowledge****HISTORIC THEME AND SUB THEME**

Occupations

**PREVIOUS LISTINGS****MANAGEMENT**

Historic site without built features. Recognise - for example with a plaque or place name. The history of the Camballin project should be recorded.

**OTHER SITE DETAILS**

C/T : Vol/Folio

Lot/Location

Diagram/Plan

Reserve No.

Vesting

Purpose

Leases

**NOTES**

**MUNICIPAL INVENTORY PLACE RECORD FORM  
SHIRE OF DERBY/WEST KIMBERLEY**

**CAVE SCHOOL AND HOMESTEAD ON GO GO STATION**

**L.G.A. Site No.**

**HCWA No.** 40 0698

**ASSESSED BY**

**Name** Heritage and Conservation Professionals

**Contact details** PO Box 7576 Cloisters Square, Perth, 6850. Ph. (09) 4815021.

**Date** Nov. 1994.

**Review**

**Owner/Occupier consulted (Y/N)**

**Person**

**Date**

**PHOTOGRAPH**

**Date** Not photographed

**NAME ADDRESS & OWNERSHIP OF THE PLACE**

**Name of Place** Cave School and homestead on Go Go Station

**Former/Other Names**

**Address/Location/Map Reference**

**Owners Name**

**Contact details**

**Occupied** Yes

**Public Access** No

**DESCRIPTION OF THE PLACE AND ITS SETTING**

During the 1950s a cave on Go Go Station that had been used as an air raid shelter during World War II was used as a school room for twenty students.

The former homestead is believed to date from the period 1886 to 1913.

**SITE TYPE**

School

**STATEMENT OF SIGNIFICANCE**

Significant to the history of education in the Kimberley.

**SUPPORTING INFORMATION**

**Photographs**

**Bibliography**

Cathie Clement *Municipal Inventory for the Shire of Derby/West Kimberley; Thematic Framework*; 1995.

**Local knowledge**

**HISTORIC THEME AND SUB THEME**

Occupations

Demographic settlement and mobility

**PREVIOUS LISTINGS**

Heritage Council Database

National Trust Classified 25.9.1985.

**MANAGEMENT**

Highest level of protection appropriate; recommended for entry into the State Register of Heritage Places; provide maximum encouragement to the owner to conserve the significance of the place.

**OTHER SITE DETAILS**

**C/T : Vol/Folio**

**Lot/Location**

**Diagram/Plan**

**Reserve No.**

**Vesting**

**Purpose**

**Leases**

**NOTES**

This site was not visited during the preparation of the inventory due to the restrictions of time and budget.

**MUNICIPAL INVENTORY PLACE RECORD FORM  
SHIRE OF DERBY/WEST KIMBERLEY**

**OLD HOMESTEAD  
OSCAR RANGE STATION**

**L.G.A. Site No.**

**HCWA No.**

**ASSESSED BY**

**Name** Heritage and Conservation Professionals

**Contact details** PO Box 7576 Cloisters Square, Perth, 6850. Ph. (09) 4815021.

**Date**

**Review**

**Owner/Occupier consulted (Y/N)**

**Person**

**Date**

**PHOTOGRAPH**

**Date** Not photographed

**NAME ADDRESS & OWNERSHIP OF THE PLACE**

**Name of Place** Old Homestead, Oscar Range Station.

**Former/Other Names**

**Address/Location/Map Reference**

**Owners Name**

**Contact details**

**Occupied** Yes

**Public Access** No

**DESCRIPTION OF THE PLACE AND ITS SETTING**

Oscar Range Station contains the ruins of a stone homestead believed to date from the 1890s. The station was also the site of experiments with cotton and tropical fruit growing in the period 1909/1910.

**SITE TYPE**

Ruins

**STATEMENT OF SIGNIFICANCE**

Significant to the history of settlement in the Kimberley region.

**SUPPORTING INFORMATION**

**Photographs**

**Bibliography**

Cathie Clement *Municipal Inventory for the Shire of Derby/West Kimberley; Thematic Framework*; 1995.

**Local knowledge**

**HISTORIC THEME AND SUB THEME**

Occupations

Demographic settlement and mobility

**PREVIOUS LISTINGS****MANAGEMENT**

Highest level of protection appropriate; recommended for entry into the State Register of Heritage Places; provide maximum encouragement to the owner to conserve the significance of the place.

**OTHER SITE DETAILS****C/T : Vol/Folio****Lot/Location****Diagram/Plan****Reserve No.****Vesting****Purpose****Leases****NOTES**

This site was not visited during the preparation of the inventory due to the restrictions of time and budget.

**MUNICIPAL INVENTORY PLACE RECORD FORM  
SHIRE OF DERBY/WEST KIMBERLEY**

**OLD HOMESTEAD  
LEOPOLD DOWNS STATION**

**L.G.A. Site No.**

**HCWA No.**

**ASSESSED BY**

**Name** Heritage and Conservation Professionals

**Contact details** PO Box 7576 Cloisters Square, Perth, 6850. Ph. (09) 4815021.

**Date** Nov. 1994.

**Review**

**Owner/Occupier consulted (Y/N)**

**Person**

**Date**

**PHOTOGRAPH**

**Date** Nov 1994.



**NAME ADDRESS & OWNERSHIP OF THE PLACE**

**Name of Place** Old Homestead, Leopold Downs Station

**Former/Other Names**

**Address/Location/Map Reference** Lennard river SE 51 8 YA5923

**Owners Name**

**Contact details**

**Occupied** Yes

**Public Access** No

## **DESCRIPTION OF THE PLACE AND ITS SETTING**

The old homestead on Leopold Downs Station is believed to be the second constructed on the station and to date from the early 1900s. The site consists of the ruins of two stone buildings one of which was the homestead and the other the kitchen. The buildings were probably occupied until the 1950s. There is evidence that the homestead was extended at some point. The extension was constructed of timber frame construction on a concrete slab, however materials from this structure have been removed from the site. There are remnants of station machinery in the immediate vicinity of the homestead building.

## **SITE TYPE**

Ruins

## **STATEMENT OF SIGNIFICANCE**

Significant to the history of settlement in the Kimberley region.

## **SUPPORTING INFORMATION**

### **Photographs**

### **Bibliography**

Cathie Clement *Municipal Inventory for the Shire of Derby/West Kimberley; Thematic Framework*; 1995.

### **Local knowledge**

## **HISTORIC THEME AND SUB THEME**

Demographic settlement and mobility

## **PREVIOUS LISTINGS**

## **MANAGEMENT**

Highest level of protection appropriate; recommended for entry into the State Register of Heritage Places; provide maximum encouragement to the owner to conserve the significance of the place.

The site could be interpreted for tourist purposes. An archaeological survey of the site could provide useful evidence of station life.

## **OTHER SITE DETAILS**

C/T : Vol/Folio

Lot/Location

Diagram/Plan

Reserve No.

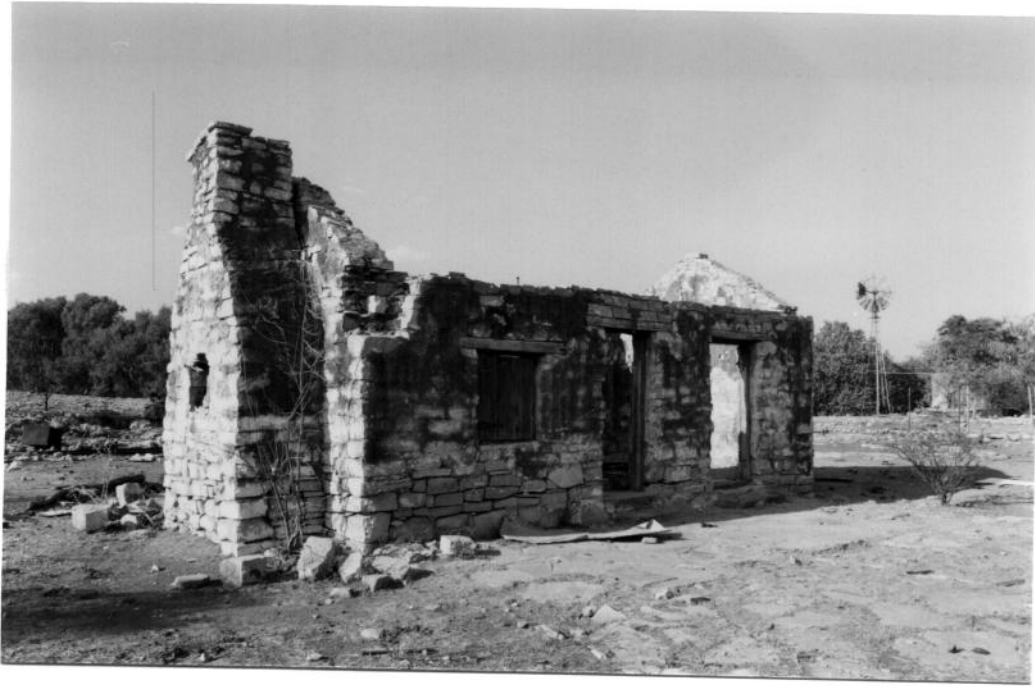
Vesting

Purpose

Leases

## **NOTES**





**MUNICIPAL INVENTORY PLACE RECORD FORM  
SHIRE OF DERBY/WEST KIMBERLEY**

**LILLMALOORA**

**L.G.A. Site No.**

**HCWA No.**

**ASSESSED BY**

**Name** Heritage and Conservation Professionals

**Contact details** PO Box 7576 Cloisters Square, Perth, 6850. Ph. (09) 4815021.

**Date**

**Review**

**Owner/Occupier consulted (Y/N)**

**Person**

**Date**

**PHOTOGRAPH**

**Date**



**NAME ADDRESS & OWNERSHIP OF THE PLACE**

**Name of Place** Lillmaloora

**Former/Other Names**

**Address/Location** Adjacent to Windjana Gorge National Park.

**Map Reference** Lennard River SE 51 8 YA0978.

**Owners Name** Government of Western Australia

**Contact details** Department of Conservation and Land Management

**Occupied** No

**Public Access** Yes

## DESCRIPTION OF THE PLACE AND ITS SETTING

Lillmaloorra sheep station was established by the King Sound Pastoral Company in 1884. The buildings were constructed several years later. Lillmaloorra was used as a sheep station until 1893 when it was advertised for sale in Dalgety's auction notice. The property appears to have remained unsold. Portions were transferred in 1894 to Lukin and Monger of nearby Lennard River station, who then used Lillmaloorra for a short time in conjunction with their own station. (profile provided by Dr Cathie Clement)

The late 1880s and early 1890s was a period of considerable conflict between white settlers and the Aboriginal people living in the Napier and Oscar Ranges. A key figure who emerged in the conflict was an Aboriginal tracker named Jandamarra (Pigeon) who belonged to the local Bunuba people. There are a number of recorded incidents involving the Bunuba people in the late 1880s including the killing of a large number of sheep on Lillmaloorra station in 1889. Lukin, supported by a number of other pastoralists, petitioned the colonial Government in Perth who responded by increasing police patrols and establishing a permanent police outpost near Windjana Gorge. (Pederson, 1984) It is known that the police had three successive camps in this area in the early 1890s and that one of these was Lillmaloorra.

In 1893 Jandamarra, who was serving a sentence for a previous offence, and another Aboriginal prisoner named Captain were working as trackers with Constable Richardson at Robinson River Police Station north of Derby. They were subsequently moved to the Napier and Oscar Range area with the task of capturing Aboriginal people involved with sheep stealing. These were Jandamarra's own people and in November 1894, Jandamarra and Captain shot PC Richardson who was reported to be sleeping in the breezeway at Lillmaloorra. (Police Occurrences and *Northern Public Opinion*, 6.6.1896 p3) The Aboriginal prisoners captured previously were released. This began a period of intense conflict which included a further raid on Lillmaloorra in 1896 and an attack on Oscar Range homestead leading finally to the death of Jandamarra at Tunnel Creek in 1897.

There is no readily accessible record of Lillmaloorra's use after the period of conflict in the 1890s and it is not known whether the buildings were used into the twentieth century.

The remaining structures at Lillmaloorra consist of two main stone structures separated by a breezeway. There is evidence of a stone floor in the breezeway area. There is a third stone structure adjacent and a pile of stones behind the complex which may be the remains of a fourth building, possibly a kitchen. Other building materials such as timber framing or corrugated iron sheets, have probably been removed from the site for use on other buildings as is common practice in the remote Kimberley region.

An early drawing of the buildings located in the Derby Library is the best available evidence of the original form of the buildings.

**SITE TYPE**

Ruin

**STATEMENT OF SIGNIFICANCE**

The buildings at Lillmaloora are significant in the history of the early settlement of the Kimberley. They are significant for their use firstly as an early station group and secondly as a police camp dating from the period of conflict between the white settlers and the local Aboriginal people in the 1890s. They are significant for their role in the conflicts involving Jandamarra (Pigeon) and in particular the incident involving the killing of PC Richardson which led to the period of intense conflict between 1894 and 1897.

**SUPPORTING INFORMATION****Photographs****Bibliography**

Cathie Clement: *Thematic Framework for the Shire of Derby/West Kimberley Municipal Heritage Inventory*, 1995 and personal comment

Howard Pedersen; *Pigeon: An Australian Aboriginal Rebel*; in R. Reece and T. Stannage (eds), *Studies in WA History* Vol.8, p7, UWA Press Dec. 1984.

**Local knowledge****HISTORIC THEME AND SUB THEME**

Demographic settlement and mobility

**PREVIOUS LISTINGS**

National Trust classified 7.12.1970

**MANAGEMENT**

Highest level of protection appropriate; recommended for entry into the State Register of Heritage Places; provide maximum encouragement to the owner to conserve the significance of the place.

The buildings at Lillmaloora should be conserved as an historically significant site. They should remain accessible to the public, however a program of management and conservation should be established in order to protect them from further deterioration.

**OTHER SITE DETAILS**

C/T : Vol/Folio

Lot/Location

Diagram/Plan

Reserve No.

Vesting

Purpose

Leases

**NOTES**

Refer to Conservation Plan prepared by Rosemary Rosario March 1995 for Shire of Derby/West Kimberley

**MUNICIPAL INVENTORY PLACE RECORD FORM  
SHIRE OF DERBY/WEST KIMBERLEY**

**OLD HOMESTEAD RUINS  
MOUNT HART STATION**

**L.G.A. Site No.**

**HCWA No.**

**ASSESSED BY**

**Name** Heritage and Conservation Professionals

**Contact details** PO Box 7576 Cloisters Square, Perth, 6850. Ph. (09) 4815021.

**Date** Nov. 1994.

**Review**

**Owner/Occupier consulted (Y/N)**

**Person**

**Date**

**PHOTOGRAPH**

**Date** Nov. 1994.



**NAME ADDRESS & OWNERSHIP OF THE PLACE**

**Name of Place** Old Homestead, Mount Hart Station

**Former/Other Names**

**Address/Location/Map Reference**

**Owners Name**

**Contact details**

**Occupied** No

**Public Access** Restricted

**DESCRIPTION OF THE PLACE AND ITS SETTING**

Mount Hart Station contains ruins of a stone homestead that probably dates from the period around the turn of the century. The ruins contain the foundations of a group of buildings. There are also several graves in the vicinity of the ruins.

**SITE TYPE**

Ruins

**STATEMENT OF SIGNIFICANCE**

Significant to the history of settlement in the Kimberley region.

**SUPPORTING INFORMATION****Photographs****Bibliography**

Cathie Clement *Municipal Inventory for the Shire of Derby/West Kimberley; Thematic Framework*; 1995.

**Local knowledge****HISTORIC THEME AND SUB THEME**

Demographic settlement and mobility

**PREVIOUS LISTINGS****MANAGEMENT**

High level of protection appropriate; provide maximum encouragement to the owner to conserve the significance of the place.

The site could be interpreted for tourist purposes. An archaeological survey of the site could provide useful evidence of station life.

**OTHER SITE DETAILS**

C/T : Vol/Folio

Lot/Location

Diagram/Plan

Reserve No.

Vesting

Purpose

Leases

**NOTES**



**MUNICIPAL INVENTORY PLACE RECORD FORM  
SHIRE OF DERBY/WEST KIMBERLEY**

**DONKEY MEAT FACTORY**

**L.G.A. Site No.**

**HCWA No.**

**ASSESSED BY**

**Name** Heritage and Conservation Professionals

**Contact details** PO Box 7576 Cloisters Square, Perth, 6850. Ph. (09) 4815021.

**Date**

**Review**

**Owner/Occupier consulted (Y/N)**

**Person**

**Date**

**PHOTOGRAPH**

**Date** Nov. 1994.



**NAME ADDRESS & OWNERSHIP OF THE PLACE**

**Name of Place** Donkey Meat Factory

**Former/Other Names**

**Address/Location/Map Reference** Near Mount Hart turn off on Gibb River Rd.

**Owners Name**

**Contact details**

**Occupied** No

**Public Access** Yes

## **DESCRIPTION OF THE PLACE AND ITS SETTING**

Donkeys were used for transport in the Kimberley from 1886 and were also introduced for stud purposes to produce mules which were resistant to Kimberley horse disease which had devastated the horse population. As a result the area had a large donkey population which during the 1950s had reached the level of nuisance and as a consequence donkeys were being shot.

In the late 1950s a Mr Telford who was a concrete construction worker by profession flew over Mt Hart and decided to purchase it. He travelled overland from Victoria with men and vehicles and experienced considerable hardship along the way. After seeing donkeys being shot he saw the potential to process and export the meat to the Asian market. He established a processing plant and used one gallon tins to can the processed meat. He took samples to Singapore to test the market. However the Health Department soon closed the plant down as it did not meet international export health requirements.

The site contains the ruins of the factory buildings.

## **SITE TYPE**

Ruins

## **STATEMENT OF SIGNIFICANCE**

The Donkey Meat Processing Factory at Mt Hart is significant because it reflects the history of one of the more unusual enterprises attempted in the Kimberley region.

## **SUPPORTING INFORMATION**

### **Photographs**

### **Bibliography**

Derby/West Kimberley Public Library Local History Collection Donkey Processing Plant File. Oral history : Jim Anderson

### **Local knowledge**

## **HISTORIC THEME AND SUB THEME**

Occupations

## **PREVIOUS LISTINGS**

## **MANAGEMENT**

Conserve the site of the Donkey Processing Factory as a curiosity of Kimberley history. Provide interpretive information for tourists.

## **OTHER SITE DETAILS**

C/T : Vol/Folio

Lot/Location

Diagram/Plan

Reserve No.

Vesting

Purpose

Leases



**MUNICIPAL INVENTORY PLACE RECORD FORM  
SHIRE OF DERBY/WEST KIMBERLEY**

**HAWKSTONE PEAK  
SITE OF VAN EMMERICK AIR CRASH**

**L.G.A. Site No.**

**HCWA No.**

**ASSESSED BY**

**Name** Heritage and Conservation Professionals

**Contact details** PO Box 7576 Cloisters Square, Perth, 6850. Ph. (09) 4815021.

**Date** Nov. 1994.

**Review**

**Owner/Occupier consulted (Y/N)**

**Person**

**Date**

**PHOTOGRAPH**

**Date** Not photographed

**NAME ADDRESS & OWNERSHIP OF THE PLACE**

**Name of Place** Hawkstone Peak - air crash site

**Former/Other Names**

**Address/Location/Map Reference**

**Owners Name**

**Contact details**

**Occupied** No

**Public Access** Yes, but inaccessible

**DESCRIPTION OF THE PLACE AND ITS SETTING**

In February 1956 a plane with the Flying Doctor Service (an Avro Ansen) crashed at Hawkstone Peak during a violent tropical storm whilst flying from Tableland Station. The pilot, two nurses and the male passenger and his sick baby all perished. A memorial plaque has been erected to their memory at Derby airport.

**SITE TYPE**

Site of historic event

**STATEMENT OF SIGNIFICANCE**

Significant tragic event which pays tribute to the service of pioneers in the remote Kimberley region of Western Australia. In this case the staff of the Flying Doctor Service and also the residents of remote stations.

**SUPPORTING INFORMATION**

**Photographs**

**Bibliography**

Cathie Clement *Municipal Inventory for the Shire of Derby/West Kimberley; Thematic Framework*; 1995.

**Local knowledge**

**HISTORIC THEME AND SUB THEME**

Occupations

Transport and communications

**PREVIOUS LISTINGS****MANAGEMENT**

Ensure continued maintenance of the memorial plaque at the Derby Airport.

**OTHER SITE DETAILS****C/T : Vol/Folio****Lot/Location****Diagram/Plan****Reserve No.****Vesting****Purpose****Leases****NOTES**

This site was not visited during the preparation of the inventory due to the restrictions of time and budget.

**MUNICIPAL INVENTORY PLACE RECORD FORM  
SHIRE OF DERBY/WEST KIMBERLEY**

**LUKINS BORE  
KIMBERLEY DOWNS STATION**

**L.G.A. Site No.**

**HCWA No.**

**ASSESSED BY**

**Name** Heritage and Conservation Professionals

**Contact details** PO Box 7576 Cloisters Square, Perth, 6850. Ph. (09) 4815021.

**Date**

**Review**

**Owner/Occupier consulted (Y/N)**

**Person**

**Date**

**PHOTOGRAPH**

**Date** Nov. 1994.



**NAME ADDRESS & OWNERSHIP OF THE PLACE**

**Name of Place** Lukins Bore, Kimberley Downs Station

**Former/Other Names**

**Address/Location/Map Reference** Lennard river SE 52 5 AF8984

**Owners Name**

**Contact details**

**Occupied**

**Public Access**

**DESCRIPTION OF THE PLACE AND ITS SETTING**

Lukin's Bore is a water hole on Kimberley Downs Station which takes its name from William Lukin, founder of the Lennard River Station.

**SITE TYPE**

Water Hole

**STATEMENT OF SIGNIFICANCE**

Lukins Bore would have been significant as a water source for Aboriginal people and has been used since the 1880s as a watering hole for sheep and then cattle. Its significance relates to the history of settlement of the Kimberley.

**SUPPORTING INFORMATION****Photographs****Bibliography**

Cathie Clement *Municipal Inventory for the Shire of Derby/West Kimberley; Thematic Framework*; 1995.

**Local knowledge****HISTORIC THEME AND SUB THEME**

Demographic settlement and mobility

Occupations

**PREVIOUS LISTINGS****MANAGEMENT**

High level of protection appropriate; provide maximum encouragement to the owner to conserve the significance of the place.

**OTHER SITE DETAILS**

C/T : Vol/Folio

Lot/Location

Diagram/Plan

Reserve No.

Vesting

Purpose

Leases

**NOTES**

**MUNICIPAL INVENTORY PLACE RECORD FORM  
SHIRE OF DERBY/WEST KIMBERLEY**

**MEATWORKS  
GLENROY STATION**

**L.G.A. Site No.**

**HCWA No.**

**ASSESSED BY**

**Name** Heritage and Conservation Professionals

**Contact details** PO Box 7576 Cloisters Square, Perth, 6850. Ph. (09) 4815021.

**Date**

**Review**

**Owner/Occupier consulted (Y/N)**

**Person**

**Date**

**PHOTOGRAPH**

**Date** Not photographed

**NAME ADDRESS & OWNERSHIP OF THE PLACE**

**Name of Place** Meatworks, Glenroy Station

**Former/Other Names**

**Address/Location/Map Reference**

**Owners Name**

**Contact details**

**Occupied** Yes

**Public Access** Restricted

**DESCRIPTION OF THE PLACE AND ITS SETTING**

The air beef scheme was initiated by Lindsay Gordon Blythe in the late 1940s air-freighting beef from the Blythe Stations at Mount House and Glenroy. An abattoir was built at Glenroy in 1948. Air Beef Pty Ltd was established by MacRobertson Miller Airlines, Australian National Airways and a group of pastoralists in 1948/9. The venture involved airlifting chilled beef from the abattoir at Glenroy Station to Wyndham and later on Derby. By 1953 the Air Beef planes faced competition from the road trains transporting livestock to the meat works in Broome. The Glenroy Abattoir closed in 1964 and was virtually destroyed by fire in 1966.

**SITE TYPE**

Site of significant activity

**STATEMENT OF SIGNIFICANCE**

Significant to the history of the pastoral industry in the Kimberley.

**SUPPORTING INFORMATION****Photographs****Bibliography**

Cathie Clement *Municipal Inventory for the Shire of Derby/West Kimberley; Thematic Framework*; 1995.

**Local knowledge****HISTORIC THEME AND SUB THEME**

Occupations

**PREVIOUS LISTINGS****MANAGEMENT**

Historic site. Recognise for example with a plaque or place name.

**OTHER SITE DETAILS****C/T : Vol/Folio****Lot/Location****Diagram/Plan****Reserve No.****Vesting****Purpose****Leases****NOTES**

This site was not visited during the preparation of the inventory due to the restrictions of time and budget

**MUNICIPAL INVENTORY PLACE RECORD FORM  
SHIRE OF DERBY/WEST KIMBERLEY**

**YEEDA STATION**

**L.G.A. Site No.**

**HCWA No.**

**ASSESSED BY**

**Name** Heritage and Conservation Professionals

**Contact details** PO Box 7576 Cloisters Square, Perth, 6850. Ph. (09) 4815021.

**Date**

**Review**

**Owner/Occupier consulted (Y/N)**

**Person**

**Date**

**PHOTOGRAPH**

**Date** Not photographed

**NAME ADDRESS & OWNERSHIP OF THE PLACE**

**Name of Place** Yeeda Station

**Former/Other Names**

**Address/Location/Map Reference**

**Owners Name**

**Contact details**

**Occupied** Yes

**Public Access** No

**DESCRIPTION OF THE PLACE AND ITS SETTING**

The settlement of Yeeda Station dates from the period prior to 1885. Julius Brockman and the Murray Squatting Company landed at Beagle Bay in 1879 and 1880 and travelled inland from there in the summer of 1880-81. Their animals grazed along the Fitzroy River and formed the nucleus of the Yeeda station flock.

There is believed to be a boab tree marked by Alexander Forrest on the Station.

**SITE TYPE**

Pastoral Station

**STATEMENT OF SIGNIFICANCE**

Significant to the history of settlement of the Kimberley.

**SUPPORTING INFORMATION**

**Photographs**

**Bibliography**

165

**Local knowledge**

**HISTORIC THEME AND SUB THEME**

Occupations

Demographic settlement and mobility.

**PREVIOUS LISTINGS****MANAGEMENT**

Assess in more detail when considering a development application.

**OTHER SITE DETAILS**

**C/T : Vol/Folio**

**Lot/Location**

**Diagram/Plan**

**Reserve No.**

**Vesting**

**Purpose**

**Leases**

**NOTES**

This site was not visited during the preparation of the inventory due to the restrictions of time and budget.



**MUNICIPAL INVENTORY PLACE RECORD FORM  
SHIRE OF DERBY/WEST KIMBERLEY**

**MUNKAYARRA**

**L.G.A. Site No.**

**HCWA No.**

**ASSESSED BY**

**Name** Heritage and Conservation Professionals

**Contact details** PO Box 7576 Cloisters Square, Perth, 6850. Ph. (09) 4815021.

**Date**

**Review**

**Owner/Occupier consulted (Y/N)**

**Person**

**Date**

**PHOTOGRAPH**

**Date** Nov. 1994.



**NAME ADDRESS & OWNERSHIP OF THE PLACE**

**Name of Place** Munkayarra

**Former/Other Names**

**Address/Location/Map Reference** Derby SE 51 7 WA7769.

**Owners Name**

**Contact details**

**Occupied** No

**Public Access** Restricted

## **DESCRIPTION OF THE PLACE AND ITS SETTING**

Munkayarra is a watering place on a station which is incorporated into the area occupied by Mowanjum since 1968. The site consists of a water hole and remnants of a windmill and homestead structure. The origins of these structures is not known however the site is believed to have been a poultry and cotton farm circa 1910.

## **SITE TYPE**

Water hole and ruin

## **STATEMENT OF SIGNIFICANCE**

High aesthetic significance. Related to the history of settlement of the area.

## **SUPPORTING INFORMATION**

**Photographs**

**Bibliography**

**Local knowledge**

## **HISTORIC THEME AND SUB THEME**

Demographic settlement and mobility.

## **PREVIOUS LISTINGS**

## **MANAGEMENT**

Existing structures not considered to be of heritage significance. Conserve water hole and natural setting.

## **OTHER SITE DETAILS**

**C/T : Vol/Folio**

**Lot/Location**

**Diagram/Plan**

**Reserve No.**

**Vesting**

**Purpose**

**Leases**

## **NOTES**

Public Access      Restricted

**DESCRIPTION OF THE PLACE AND ITS SETTING**

Nobbys Well consists of a large square iron tank which once contained water. The tank is set in a concrete bed containing distinctive coffee rock. The tank was manufactured in the US and is marked with the manufacturer's name - ISCA Foundry, Co. Newport, Montana. The origin of the tank is not known. The tank is located on the old stock route leading from Derby to the Fitzroy river and Broome.

**SITE TYPE**

Water Place

**STATEMENT OF SIGNIFICANCE**

Significants as a marker of the early stock routes.

**SUPPORTING INFORMATION**

**Photographs**

**Bibliography**

**Local knowledge**

**HISTORIC THEME AND SUB THEME**

Occupations

**PREVIOUS LISTINGS****MANAGEMENT**

Conserve as a remnant of the early stock routes in the Derby area. Investigate the origin of the tank and provide appropriate signage adjacent to the tank.

**OTHER SITE DETAILS**

**C/T : Vol/Folio**

**Lot/Location**

**Diagram/Plan**

**Reserve No.**

**Vesting**

**Purpose**

**Leases**

**NOTES**

**MUNICIPAL INVENTORY PLACE RECORD FORM  
SHIRE OF DERBY/WEST KIMBERLEY**

**HOMESTEAD  
MOUNT BARNETT STATION**

**L.G.A. Site No.**

**HCWA No.**

**ASSESSED BY**

**Name** Heritage and Conservation Professionals

**Contact details** PO Box 7576 Cloisters Square, Perth, 6850. Ph. (09) 4815021.

**Date**

**Review**

**Owner/Occupier consulted (Y/N)**

**Person**

**Date**

**PHOTOGRAPH**

**Date** Not photographed

**NAME ADDRESS & OWNERSHIP OF THE PLACE**

**Name of Place** Homestead at Mount Barnett Station

**Former/Other Names**

**Address/Location/Map Reference** 300 kms from Derby on Gibb River Rd.

**Owners Name** Kupingarri Aboriginal community Inc.

**Contact details** Phil Brewster or Billy King Ph .091 911945

**Occupied** Yes

**Public Access** Restricted

**DESCRIPTION OF THE PLACE AND ITS SETTING**

Mount Barnett was the main centre for mission activity from 1927 when the UAM missionaries camped in the gorges using donkeys for transport. The homestead at Mount Barnett Station is constructed of timber and stone and has been extended. It was the mission centre during World War II and has been used in association with the mission since that time.

**SITE TYPE**

Mission

**STATEMENT OF SIGNIFICANCE**

Significant in relation to the history of the UAM.

**SUPPORTING INFORMATION**

**Photographs**

**Bibliography**

**Local knowledge**

Phil Brewster

**HISTORIC THEME AND SUB THEME**

Demographic settlement and mobility.

**PREVIOUS LISTINGS****MANAGEMENT**

High level of protection appropriate. Provide maximum encouragement to the owner to conserve the significance of the place.

Assess the homestead in more detail when considering a development application.

**OTHER SITE DETAILS****C/T : Vol/Folio****Lot/Location****Diagram/Plan****Reserve No.****Vesting****Purpose****Leases****NOTES**

This site was not visited during the preparation of the inventory due to the restrictions of time and budget.

**MUNICIPAL INVENTORY PLACE RECORD FORM  
SHIRE OF DERBY/WEST KIMBERLEY**

**HOMESTEAD AND GARDENS  
MOUNT HOUSE STATION**

**L.G.A. Site No.**

**HCWA No.**

**ASSESSED BY**

**Name** Heritage and Conservation Professionals

**Contact details** PO Box 7576 Cloisters Square, Perth, 6850. Ph. (09) 4815021.

**Date**

**Review**

**Owner/Occupier consulted (Y/N)**

**Person**

**Date**

**PHOTOGRAPH**

**Date** Nov. 1994.



**NAME ADDRESS & OWNERSHIP OF THE PLACE**

**Name of Place** Mount House Station

**Former/Other Names**

**Address/Location/Map Reference** Gibb River Road

**Owners Name**

**Contact details**

**Occupied** Yes

**Public Access** Restricted

**DESCRIPTION OF THE PLACE AND ITS SETTING**

Mount House Station Homestead was constructed in 1951 of concrete blocks with a corrugated iron roof. The foundation stone was laid by Rita Blythe. The homestead is attractive and designed to suit the Kimberley climate with a central breezeway, high ceilings with natural ventilation and wide verandahs. The gardens are of particular interest for their attractive layout and for the shade house.

**BUILDING DETAILS**

**Type** Homestead

**Construction Date(s)** 1951

**Design Date**

**Sources for dates** Foundation stone

**Original use** Residential

**Later / Current use(s)** Residential

**Construction materials** Concrete blocks and corrugated iron roof.

**Alterations** Not known

**Intactness of fabric** Good

**Condition** Good

**Architect / designer / builder** Not known

**SITE TYPE**

Station homestead and garden

**STATEMENT OF SIGNIFICANCE**

Typical example of station homestead constructed during the 1950s. The gardens are of particular significance.

**SUPPORTING INFORMATION**

**Photographs**

**Bibliography**

**Local knowledge**

**HISTORIC THEME AND SUB THEME**

Demographic settlement and mobility

**PREVIOUS LISTINGS****MANAGEMENT**

Retain and conserve if possible. Encourage the owner to conserve the significance of the place.

**OTHER SITE DETAILS**

**C/T : Vol/Folio**

**Lot/Location**

**Diagram/Plan**

**Reserve No.**

**Vesting**

**Purpose**

**Leases**

**NOTES**



**MUNICIPAL INVENTORY PLACE RECORD FORM  
SHIRE OF DERBY/WEST KIMBERLEY**

**OLD CHERABUN STATION**

**L.G.A. Site No.**

**HCWA No.**

**ASSESSED BY**

**Name** Heritage and Conservation Professionals

**Contact details** PO Box 7576 Cloisters Square, Perth, 6850. Ph. (09) 4815021.

**Date** **Review**

**Owner/Occupier consulted (Y/N)**

**Person** **Date**

**PHOTOGRAPH**

**Date** Not photographed

**NAME ADDRESS & OWNERSHIP OF THE PLACE**

**Name of Place** Old Cherabun Station

**Former/Other Names**

**Address/Location/Map Reference** On Go Go Station, approximately 60 Kms from Fitzroy Crossing on the Fitzroy River. Noonkanbah SE 51 12 YV4553.

**Owners Name** Harry Harris

**Contact details**

**Occupied** No

**Public Access** Restricted

**DESCRIPTION OF THE PLACE AND ITS SETTING**

Cherabun was originally an out station of Go Go Station but was established as a station in its own right during World War II. The station contains the remnants of the homestead out buildings including the old kitchen, bread oven and meat house. The kitchen is constructed of concrete blocks on a concrete floor with a corrugated iron roof with verandahs. The wood store is at one end with an outdoor bread oven and the meat store is at the other end of the building.

**SITE TYPE**

Station homestead kitchen

**STATEMENT OF SIGNIFICANCE**

Significant as an example of a bygone way of life.

**SUPPORTING INFORMATION**

**Photographs**

**Bibliography**

**Local knowledge**

Joy Motter

**HISTORIC THEME AND SUB THEME**

Demographic settlement and mobility.

**PREVIOUS LISTINGS****MANAGEMENT**

Retain and conserve if possible. Encourage the owner to conserve the significance of the place.

**OTHER SITE DETAILS**

C/T : Vol/Folio

Lot/Location

Diagram/Plan

Reserve No.

Vesting

Purpose

Leases

**NOTES**

**MUNICIPAL INVENTORY PLACE RECORD FORM  
SHIRE OF DERBY/WEST KIMBERLEY**

**LIVERINGA HOMESTEAD GROUP**

**L.G.A. Site No.**

**HCWA No.** 40 0694

**ASSESSED BY**

**Name** Heritage and Conservation Professionals

**Contact details** PO Box 7576 Cloisters Square, Perth, 6850. Ph. (09) 4815021.

**Date** **Review**

**Owner/Occupier consulted (Y/N)**

**Person** **Date**

**PHOTOGRAPH**

**Date** Nov. 1994.



**Liveringa Homestead 1909**

**NAME ADDRESS & OWNERSHIP OF THE PLACE**

**Name of Place** Liveringa Station Homestead Group

**Former/Other Names**

**Address/Location/Map Reference**

**Owners Name**

**Contact details**

**Occupied**

**Public Access**

## DESCRIPTION OF THE PLACE AND ITS SETTING

Liveringa Station was the principal station of the Kimberley Pastoral Company which landed at King Sound in 1881, being the first of the West Kimberley pastoralists to attempt this point of entry. The only other station in existence on the Fitzroy at this time was Yeeda. The existing stone homestead building was constructed in 1908 by the Kimberley Pastoral Company and the earlier homestead was demolished. The homestead is a fine stone building with high ceilings and ventilation gaps between the walls and the ceiling. There is a wide verandah on all sides. The house has been extended but the newer section is easily distinguished from the original as it is of timber frame construction.

The station contains a number of other significant outbuildings including shearing shed from the days when sheep were run on the station. There is also a traditional kitchen.

The Kimberley Pastoral Company was one of the few early landholders to retain a long term interest in leases acquired before 1885.

## BUILDING DETAILS

**Type** Homestead

**Construction Date(s)** 1909

**Design Date**

**Sources for dates** Thematic Framework

**Original use** Residential

**Later / Current use(s)** Residential

**Construction materials** Stone and iron

**Alterations** Timber frame section

**Intactness of fabric** Good

**Condition** Good

**Architect / designer / builder**

## SITE TYPE

Station homestead and grounds

## STATEMENT OF SIGNIFICANCE

Significant to the history of the settlement of the Kimberley region. Very significant as a fine example of homestead group from the early 1900s.

## SUPPORTING INFORMATION

### Bibliography

Cathie Clement *Municipal Inventory for the Shire of Derby/West Kimberley; Thematic Framework*; 1995. And personal comment.

### Local knowledge

## HISTORIC THEME AND SUB THEME

Demographic settlement and mobility

**PREVIOUS LISTINGS**

Heritage Council Database

National Trust Classified: 5.6.1984.

Register of the National Estate: 15.10.1984.

**MANAGEMENT**

Highest level of protection appropriate; recommended for entry into the State Register of Heritage places; provide maximum encouragement to the owner to conserve the significance of the place.

**OTHER SITE DETAILS**

C/T : Vol/Folio

Lot/Location

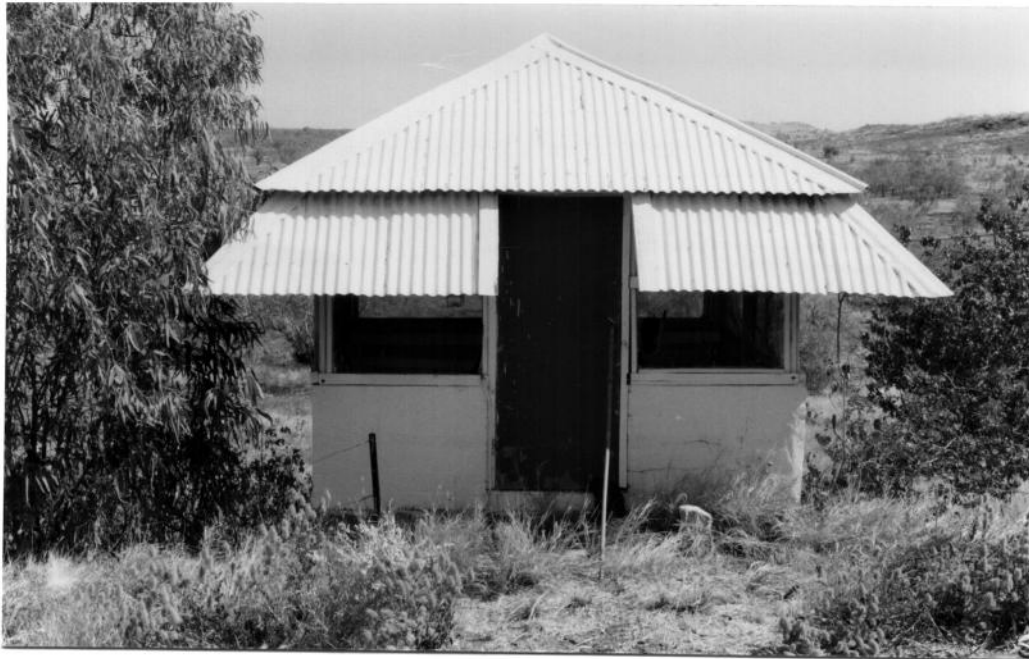
Diagram/Plan

Reserve No.

Vesting

Purpose

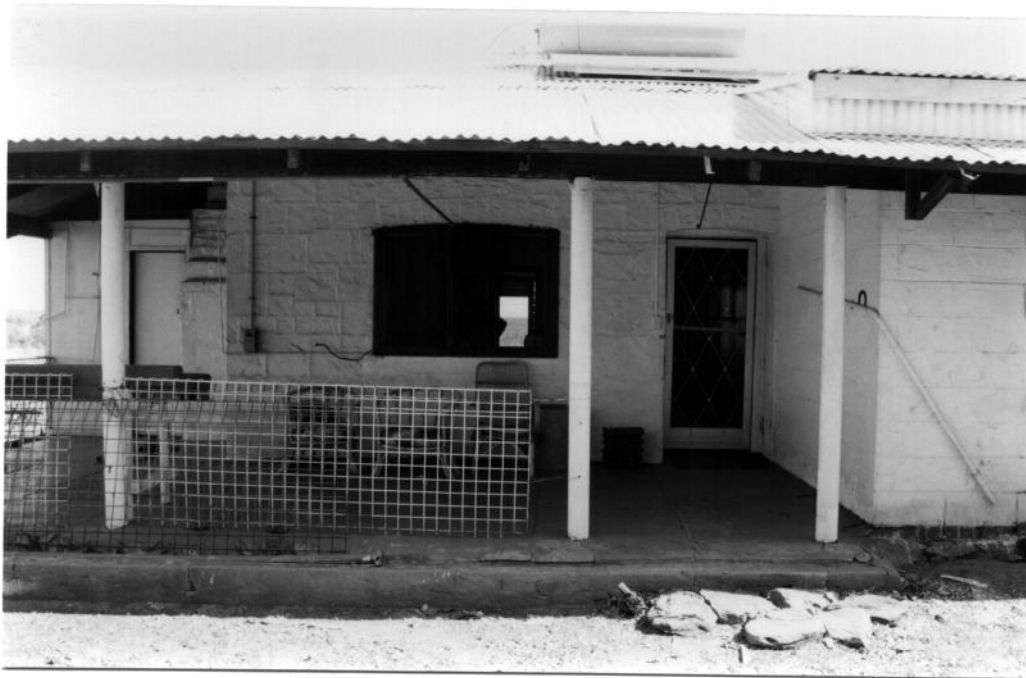
Leases

**NOTES**

**Kitchen**



**Shearing Shed - Liveringa**



**Outbuildings - Liveringa**

**MUNICIPAL INVENTORY PLACE RECORD FORM  
SHIRE OF DERBY/WEST KIMBERLEY**

**FOSSIL DOWNS STATION**

**L.G.A. Site No.**

**HCWA No.** 40 0697

**ASSESSED BY**

**Name** Heritage and Conservation Professionals

**Contact details** PO Box 7576 Cloisters Square, Perth, 6850. Ph. (09) 4815021.

**Date** Nov. 1994.

**Review**

**Owner/Occupier consulted (Y/N)**

**Person**

**Date**

**PHOTOGRAPH**

**Date** Nov. 1994.



**NAME ADDRESS & OWNERSHIP OF THE PLACE**

**Name of Place** Fossil Downs

**Former/Other Names**

**Address/Location/Map Reference** Noonkanbah SE 51 12 YV9592.

**Owners Name** Mr and Mrs Henwood

**Contact details** Fossil Downs

**Occupied** Yes

**Public Access** No

## DESCRIPTION OF THE PLACE AND ITS SETTING

Fossil Downs Station was established by the MacDonald family in 1886. In 1938 William Neil MacDonald married Maxine, a Sydney model, and brought her to Fossil Downs. They built the existing homestead from clay bricks made on the property. William died in 1963 and Maxine in 1988 and both are buried in the Station cemetery.

The Fossil Downs homestead is unusually grand and its construction and lavish furnishing are a remarkable achievement in the remote Kimberley location. The building is designed facing the river however the rear entrance is most commonly used as the front door. The building is of two storeys and designed around a central entry hall with a fine jarrah staircase constructed in Perth and transported to the Kimberley station. The original fittings and furnishings have been conserved intact in the building and the place contains fine examples of interior design dating from the 1940s. The art-deco staircase and balustrade is of particular significance.

The house is set in attractively landscaped grounds with immaculate gardens leading up to the house from the station entry gates. There are a number of other buildings within the station complex including stables dating from the 1930s and station living quarters. All these building have been conserved by the present owners.

The station was used by the RAAF during World War II.

The station is prone to serious flooding and the owners have installed elaborate pulley systems to lift furniture above the water level in the event of floods.

## BUILDING DETAILS

**Type** Homestead

**Construction Date(s)** 1938-40s **Design Date**

**Sources for dates** Thematic Framework

**Original use** Residential **Later / Current use(s)** Residential

**Construction materials** Local brick, concrete and iron

**Alterations** No alterations

**Intactness of fabric** Very good

**Condition** Very good

**Architect / designer / builder**

## SITE TYPE

Station homestead and grounds

## STATEMENT OF SIGNIFICANCE

Very significant as a unique homestead dating from the 1930s. The building is a remarkable achievement in the remote Kimberley region. The grounds are also significant and the significance is increased because the place remains intact including all original furnishings and fittings.



**SUPPORTING INFORMATION****Photographs****Bibliography**

Cathie Clement *Municipal Inventory for the Shire of Derby/West Kimberley; Thematic Framework*; 1995.

**Local knowledge**

Mrs Annette Henwood

**HISTORIC THEME AND SUB THEME**

Demographic settlement and mobility

**PREVIOUS LISTINGS**

Heritage Council Database

National Trust Classified: 4.6.1985.

Register of the National Estate: 25.9.1985

**MANAGEMENT**

Highest level of protection appropriate; recommended for entry into the State Register of Heritage places; provide maximum encouragement to the owner to conserve the significance of the place.

**OTHER SITE DETAILS**

**C/T : Vol/Folio**

**Lot/Location**

**Diagram/Plan**

**Reserve No.**

**Vesting**

**Purpose**

**Leases**

**NOTES**

The homestead is located in a position that makes it very vulnerable to floods. It is recommended that consideration be given to providing assistance to the owner where possible to protect the place. This may include incentives such as tax relief or free professional technical advice. Recognition should be given to the extent to which the owners have conserved the homestead and grounds.



## **APPENDIX A**

### **RECOMMENDED ASSESSMENT FORM HERITAGE COUNCIL OF WESTERN AUSTRALIA**



# Appendix 8

## MUNICIPAL INVENTORY PLACE RECORD FORM

..... OF .....

SITE NO. LGA number..... HCWA NO. If recorded .....

DATE OF ASSESSMENT: ..... DATE OF LAST REVISION: .....

### ASSESSED BY

Name.....Contact details Address, phone, facs .....

### NOMINATED BY

Name(s) .....

Contact details Address, phone, facs.....

Owner/occupier consulted? (Y/N) Person contacted and date.....

*Staple corners (glue is unreliable and may attack the photograph)*

Film No. ....

Neg. No.....

Date .....

### **Photograph of the place**

Not essential at the time of nomination

*(black and white preferred -- more stable for long term storage. A colour photo copy on archival paper is an alternative)*

### NAME, ADDRESS AND OWNERSHIP OF THE PLACE

Name of Place: Name by which currently known (if any).....

Any Former or Other Names: Name(s) by which historically known (if any).....

Address/Location/Map Reference/AMG reference Enter as much information as is necessary to accurately locate the place. Note that if the name of a place is officially recorded, the Geographic Names section of DOLA (09 273 7373) can provide AMG coordinates.

.....

.....

Owner name(s) .....

Contact details Address, phone, facs .....

Occupied (yes/no) Occupier Name: .....

Public Accessibility Tick      Open      Restricted      Nil

## **DESCRIPTION OF THE PLACE AND ITS SETTING**

*Provide a concise description in plain language, referring to any notable features. If possible, attach a sketch showing the significant parts of the place. An expert, more technical description can be added later if necessary*

## **BUILDING DETAILS**

*Enter as much information as can be readily ascertained at the nomination stage. If you are uncertain about the accuracy of information, indicate accordingly or leave that part blank.*

**Type** *State whether dwelling, barn, factory, etc, or other built thing* .....

**Construction Date(s)** ..... **Design Date :** ..... *Estimated /known*

**Indicate sources** *e.g. foundation stone, dated plans* .....

**Original use** ..... **Later and current use(s)** .....

**Construction materials:** .....

**Modifications:** .....

**Extent of original fabric remaining intact** *How much is original* .....

**General Condition:**      Very Poor      Poor      Fair      Good      Very good

**Architect/designer/builder** *Indicate sources of information* .....

## **TYPE OF PLACE IF NOT A BUILDING**

*State whether natural area, tree, site of event, Aboriginal site, etc* .....

## **STATEMENT OF SIGNIFICANCE**

*Endeavour to express what is significant about the place in terms of its historic, scientific, aesthetic or social heritage values (use additional pages if necessary). It is important to have this information in order to make sound decisions about whether to list, and about the future of the place. If you are unfamiliar with the formal terms of assessment referred to above, try to express in simple terms why you think the place is of heritage value. If necessary an expert, more technical assessment can be added later.*

## SUPPORTING INFORMATION

**Photographs** List.....

**Bibliography** List any books or other sources that have information about the place. Provide full particulars of author, publisher, title and date wherever possible.

**HISTORIC THEME AND SUB THEME** Enter this information when the historic thematic framework for your area has been prepared.

**PREVIOUS LISTING** N.TRUST AHC HCWA OTHER .....

**MANAGEMENT CATEGORY** To be completed by the consultant / coordinator and the committee

☐ Highest level of protection appropriate: recommended for entry into the State Register of Heritage Places; provide maximum encouragement to the owner to conserve the significance of the place

☐ Historic site without built features. Recognise-- for example with a plaque, place name, or reflection in urban or architectural design

☐ High level of protection appropriate: provide maximum encouragement to the owner under the town planning scheme to conserve the significance of the place

☐ Significant but not essential to an understanding of the history of the district: photographically record the place prior to any major redevelopment or demolition

☐ Retain and conserve if possible: endeavour to conserve the significance of the place through the provisions of the town planning scheme ; photographically record the place prior to any major redevelopment or demolition

☐ Assess in more detail when considering a development application

**OTHER SITE DETAILS** The following details are not essential at the nomination stage

C/T:Vol /Folio: ..... Lot/Location: .....

Diagram/Plan: .....

Any Reserve Details: No. .... Vesting :.....

Purpose: .....

Details of any leases e.g. mining .....